

LUX

Oświetlenie

KATALOG LS LED 2017

GRUPY OPRAW

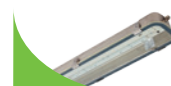
OPRAWY PRZEMYSLOWE



STAR LED 4



STAR 436 LED 6



INOX LED 8



ALOX LED 10



TEVA LED 12

OPRAWY KLOSZOWE



STM LUX IP44 LED 14



STM PLAST LED 16



STM NEW IP44 LED 18



STREV IP54 LED 20



ST LED 22



VIKTORIA LED 24



STKBO LED 26



PL LED 28



GAMMA LED 30

OPRAWY RASTROWE/KLOSZOWE



STT NEW IP40 LED 32



STF LUX LED 34



STF/AL IP40 LED 36



STF/AL DP LED 38



PARIS LED 40



MED OPÁL LED 42



MED DP LED 44



MED PR LED 46



PANEL LED 48



LABOR OPÁL LED 50



LABOR DP LED 52



LABOR PR LED 54



STALG IP40 LED 56

GRUPY OPRAW

OPRAWY BELKI



STS LED 58



STSM LED 60

OPRAWY SYSTEMOWE



MO LED 62



STT NEW LED 66



LINE LED 70



VANDA LED 72



STSMK LED 76

DOWNLIGHTY



STAS TEK LED 80



STAS K LED 82



STAS LED 84

PROJEKTORY HIGHBYE



STP LED 88



TAMARA LED 92

OPRAWY ULICZNE



STREET LED 94



STREETK LED 96



STREET TOP LED 98



STREET S LED 100



KOMBO 102

STAR LED



FIELD OF APPLICATION

DUE TO THE GASKETED BODY OF THE LUMINAIRE THE RANGE OF STAR LED LUMINAIRES HAVE HIGH DEGREE OF IP PROTECTION (IP65) AGAINST THE INTRUSION OF DUST, CONTAMINATION AND HUMIDITY. ACCORDING TO THEIR IP PROTECTION THEY ARE WIDELY APPLICABLE FOR GENERAL ILLUMINATION OF FACTORIES, WORKSHOPS, HALLS AND OTHER DUSTY HUMID SPACES, WHERE THE ENERGY EFFICIENT APPLICATION AND LONG TIME PERIOD OF LIGHT SOURCE REPLACEMENT IS IMPORTANT

BASE MATERIAL

BODY OF THE LUMINAIRE: INJECTION MOLDED POLYCARBONAT (PC) IN GREY COLOUR
MECHANIC SHEET: STEEL SHEET, POWDER PAINTED IN WHITE
DIFFUSER OF THE LUMINAIRE: INJECTION MOLDED OPAL POLYCARBONAT (PC) WITH UV RESISTANCE ADDITIVE

CLIP: STAINLESS STEEL

GASKET: ANTI-AGING FOAM RUBBER, GLUED TO THE BODY

CABLE ROUTING: THROUGH PLASTIC GLAND

FIXING:

THE LUMINAIRES CAN BE MOUNTED ONTO CEILINGS OR SUSPENDED IN CASE OF EXTERIOR USAGE. THE LUMINAIRES HAVE TO BE PROTECTED FROM THE VICISSITUDES OF WEATHER, MUST BE MOUNTED IN ROOFED ZONE.





230V
50Hz



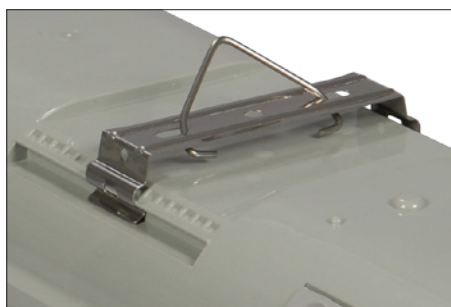
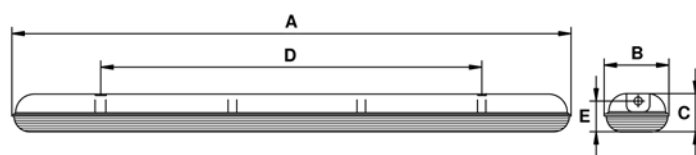
IP65



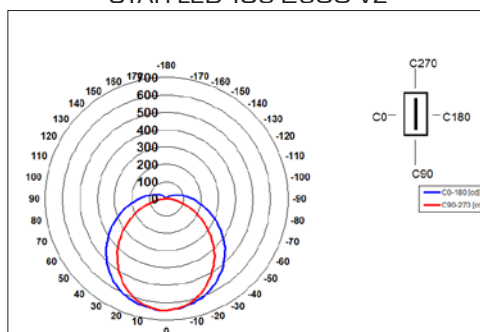
ta...25°C



Kod ref.	Typ oprawy	Str. lumeny (lm)	Barwa sw. (K)	CRI	Moc (W)	A (mm)	B (mm)	C (mm)	D (mm)	E (mm)	Waga (kg)	Klasa EN
LS 00001	STAR-136 LED 2600 VZ	2600	3000K, 4000K	>80	18W	1270	90	90	900	75	1,7	A+
LS 00002	STAR-158 LED 3250 VZ	3250	3000K, 4000K	>80	23W	1570	90	90	1200	75	2,1	A+
LS 00003	STAR-218 LED 2600 VZ	2600	3000K, 4000K	>80	18W	660	140	90	350	75	1,4	A+
LS 00004	STAR-236 LED 5200 VZ	5200	3000K, 4000K	>80	36W	1270	140	90	900	75	2,5	A+
LS 00005	STAR-258 LED 6500 VZ	6500	3000K, 4000K	>80	45W	1570	140	90	1200	75	3,4	A+
LS 00006	STAR-118 LED 2200 SL	2200	3000K, 4000K	>80	13W	660	90	90	350	75	1,0	A+
LS 00007	STAR-136 LED 4400 SL	4400	3000K, 4000K	>80	25W	1270	90	90	900	75	1,7	A+
LS 00008	STAR-158 LED 5500 SL	5500	3000K, 4000K	>80	31W	1570	90	90	1200	75	2,1	A+
LS 00009	STAR-218 LED 4400 SL	4400	3000K, 4000K	>80	25W	660	140	90	350	75	1,4	A+
LS 00010	STAR-236 LED 8800 SL	8800	3000K, 4000K	>80	50W	1270	140	90	900	75	2,5	A+
LS 00011	STAR-118 LED 1000 VI	1000	4000K	>80	10W	660	90	90	350	75	1,0	A
LS 00012	STAR-136 LED 2000 VI	2000	4000K	>80	20W	1270	90	90	900	75	1,7	A
LS 00013	STAR-158 LED 2500 VI	2500	4000K	>80	26W	1570	90	90	1200	75	2,1	A
LS 00014	STAR-218 LED 2000 VI	2000	4000K	>80	20W	660	140	90	350	75	1,4	A
LS 00015	STAR-236 LED 4000 VI	4000	4000K	>80	41W	1270	140	90	900	75	2,5	A
LS 00016	STAR-258 LED 5000 VI	5000	4000K	>80	51W	1570	140	90	1200	75	3,4	A



STAR LED-136 2600 VZ



STAR 436 LED



FIELD OF APPLICATION

DUE TO ITS IP65 PROTECTION THE TYPE OF STAR 436 LED LUMINAIRE IS APPLICABLE OF CONCENTRATED ILLUMINATION OF FACTORIES, WORKSHOPS AND OTHER DUSTY, HUMID SPACES, REQUIRING MORE INTENSIVE ILLUMINATION.

BASE MATERIAL

BODY OF THE LUMINAIRE: INJECTED POLYCARBONATE (PC) IN LIGHT GREY COLOUR

GEAR-TRAY: WHITE POWDER PAINTED STEEL SHEET

DIFFUSER: INJECTED POLYCARBONATE (PC) WITH UV RESISTANT ADDITIVE

GASKET: SILICONE RUBBER FOAM GLUED INTO THE BODY OF THE LUMINAIRE

CLIP: STAINLESS STEEL

INSTALLING

THE LUMINAIRES CAN BE MOUNTED ONTO THE CEILING OR CAN BE SUSPENDED. F USE IT CAN BE MOUNTED IN ROOFED ZONE, PROTECTED FROM THE WEATHER CONDITIONS.





230V
50Hz



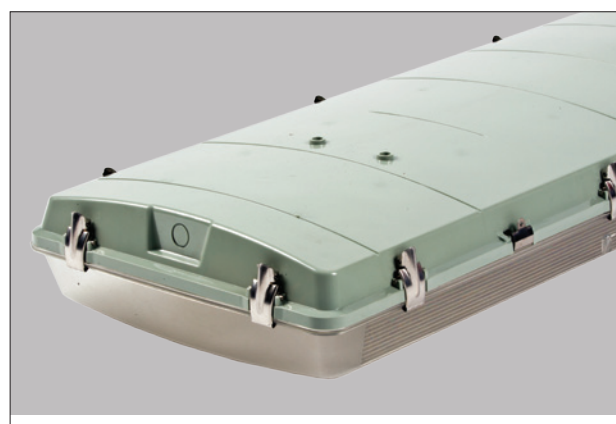
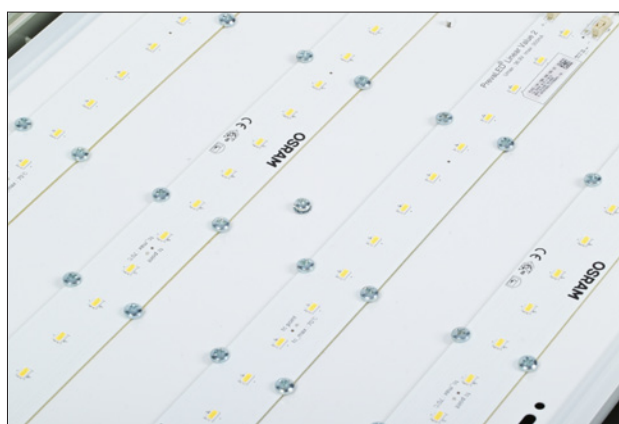
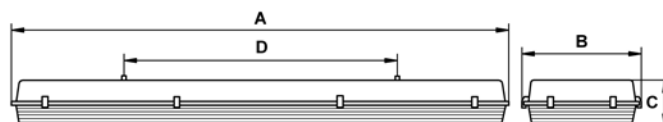
IP65



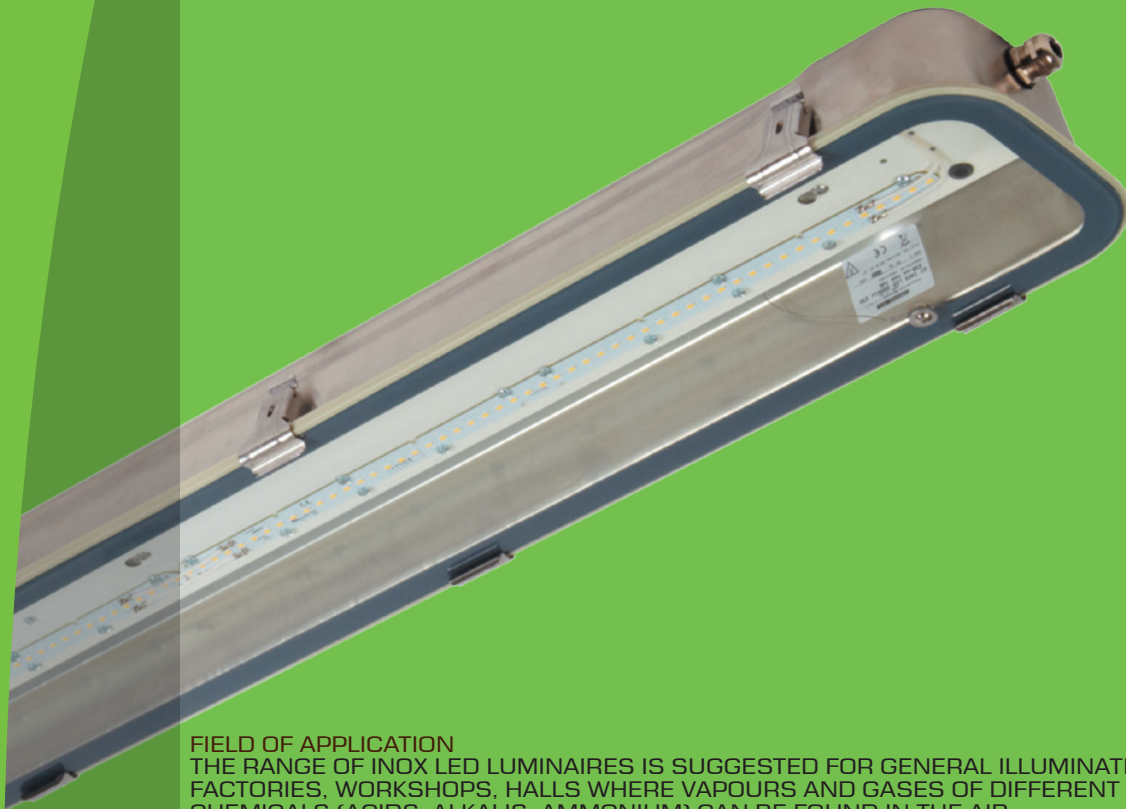
ta...25°C



Kod ref.	Typ oprawy	Str. lumeny (lm)	Barwa sw.		Moc (W)	A (mm)	B (mm)	C (mm)	D (mm)	Waga (kg)	Klasa EN
			(K)	CRI							
LS 00017	STAR-436 LED 5200 VZ	5200	3000K, 4000K	>80	36W	1331	372	120	700	6,9	A+
LS 00018	STAR-436 LED 7800 VZ	7800	3000K, 4000K	>80	54W	1331	372	120	700	6,9	A+
LS 00019	STAR-436 LED 10400 VZ	10400	3000K, 4000K	>80	73W	1331	372	120	700	6,9	A+
LS 00020	STAR-436 LED 4000 VI	4000	4000K	>80	41W	1331	372	120	700	6,9	A
LS 00021	STAR-436 LED 6000 VI	6000	4000K	>80	61W	1331	372	120	700	6,9	A
LS 00022	STAR-436 LED 8000 VI	8000	4000K	>80	82W	1331	372	120	700	6,9	A



INOX LED



FIELD OF APPLICATION

THE RANGE OF INOX LED LUMINAIRES IS SUGGESTED FOR GENERAL ILLUMINATION OF SUCH FACTORIES, WORKSHOPS, HALLS WHERE VAPOURS AND GASES OF DIFFERENT AGGRESSIVE CHEMICALS (ACIDS, ALKALIS, AMMONIUM) CAN BE FOUND IN THE AIR. DUE TO THE STAINLESS STEEL BODY AND TEMPERED GLASS, THE LUMINAIRES ARE PROPOSED FOR THE ILLUMINATION OF LIVESTOCK - SWINE, POULTRY - FARMS, MILK AND MEAT PROCESSING PLANTS, METAL AND MOULDING PLANTS.

BASE MATERIAL

BODY OF THE LUMINAIRE: STAINLESS STEEL BODY WITH STAINLESS STEEL METAL CLIP.

MECHANIC SHEET: WHITE PAINTED STEEL SHEET.

DIFFUSER: TEMPERED GLASS

GASKET: SILICONE RUBBER PROFILE.

CABLE INLET: THROUGH A STAINLESS STEEL CABLE GLAND

INSTALLING

THE LUMINAIRES CAN BE MOUNTED ONTO THE CEILING OR SUSPENDED. FOR EXTERIOR USAGE IT CAN BE MOUNTED WITHOUT LIMITATION.





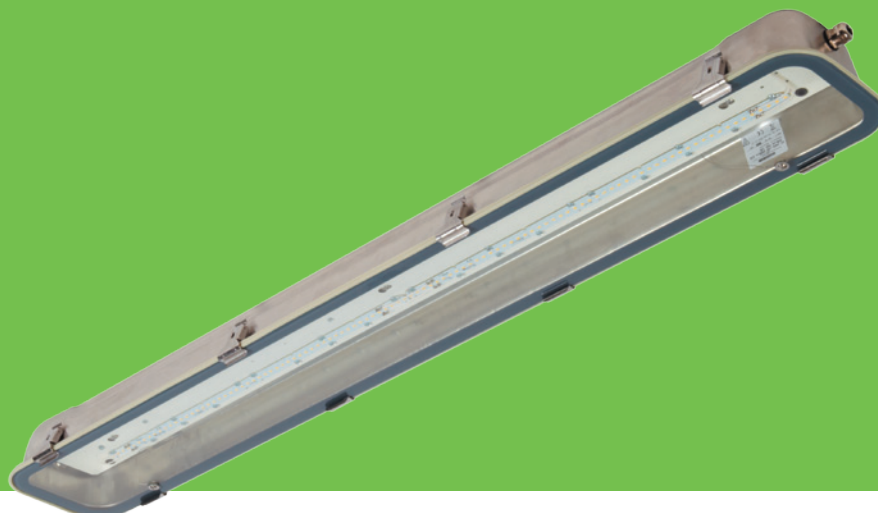
230V
50Hz



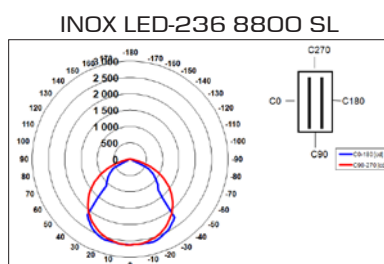
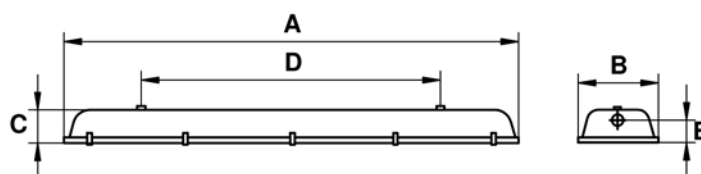
IP65



ta...25°C



Kod ref.	Typ oprawy	Str.lumeny(lm)	Barwa sw. (K)	CRI	Moc (W)	A (mm)	B (mm)	C (mm)	D (mm)	E (mm)	Waga (kg)	Klasa EN
LS 00023	INOX-136 LED 2600 VZ	2600	3000K, 4000K	>80	18W	1310	140	90	1095	65	5.3	A+
LS 00024	INOX-158 LED 3250 VZ	3250	3000K, 4000K	>80	23W	1610	140	90	1400	65	7.8	A+
LS 00025	INOX-218 LED 2600 VZ	2600	3000K, 4000K	>80	18W	710	200	90	500	65	5.2	A+
LS 00026	INOX-236 LED 5200 VZ	5200	3000K, 4000K	>80	36W	1310	200	90	1095	65	7.1	A+
LS 00027	INOX-258 LED 6500 VZ	6500	3000K, 4000K	>80	45W	1610	200	90	1400	65	9.2	A+
LS 00028	INOX-118 LED 2200 SL	2200	3000K, 4000K	>80	13W	710	140	90	500	65	3.7	A+
LS 00029	INOX-136 LED 4400 SL	4400	3000K, 4000K	>80	25W	1310	140	90	1095	65	5.3	A+
LS 00030	INOX-158 LED 5500 SL	5500	3000K, 4000K	>80	31W	1610	140	90	1400	65	7.8	A+
LS 00031	INOX-218 LED 4400 SL	4400	3000K, 4000K	>80	25W	710	200	90	500	65	5.2	A+
LS 00032	INOX-236 LED 8800 SL	8800	3000K, 4000K	>80	50W	1310	200	90	1095	65	7.1	A+
LS 00033	INOX-118 LED 1000 VI	1000	4000K	>80	10W	710	140	90	500	65	3.7	A
LS 00034	INOX-136 LED 2000 VI	2000	4000K	>80	20W	1310	140	90	1095	65	5.3	A
LS 00035	INOX-158 LED 2500 VI	2500	4000K	>80	26W	1610	140	90	1400	65	7.8	A
LS 00036	INOX-218 LED 2000 VI	2000	4000K	>80	20W	710	200	90	500	65	5.2	A
LS 00037	INOX-236 LED 4000 VI	4000	4000K	>80	41W	1310	200	90	1095	65	7.1	A
LS 00038	INOX-258 LED 5000 VI	5000	4000K	>80	51W	1610	200	90	1400	65	9.2	A



ALOX LED



FIELD OF APPLICATION

THE ALOX LED LUMINAIRES ARE SUGGESTED FOR GENERAL ILLUMINATION OF SUCH PLANTS, WORKSHOPS, HALLS, WHERE GASES AND VAPOURS OF LESS CORROSIVE CHEMICALS OCCUR IN THE AIR. DUE TO ITS ROBUST ALUMINIUM BODY AND SAFETY GLASS WE RECCOMEND IT TO PLACES WHERE THE BODY OF THE LUMINAIRE MAY BE EXPOSED TO MECHANICAL STRESS, AS WELL AS THE ENERGY EFFICIENT OPERATION AND THE LONG TIME PERIOD OF LIGHT SOURCE REPLACEMENT IS IMPORTANT.

IT IS APPLICABLE FOR ILLUMINATION OF SWINE FARMS, MILK- AND MEAT PROCESSING PLANTS, SLAUGHTERHOUSES, METAL MACHINING FACTORIES.

BASE MATERIAL

BODY OF LUMINAIRE: EXTRUDED ALUMINIUM BODY WITH STAINLESS METAL CLIP.

MECHANIC SHEET: THE FITTINGS ARE FIXED INTO THE EXTRUDED ALUMINIUM BODY.

DIFFUSER: SAFETY GLASS

GASKET: SILICONE RUBBER END AND DIFFUSER GASKET

WIRE ROUTING: THROUGH COPPER GLAND

FIXING

THE LUMINAIRES CAN BE FIXED ONTO THE CEILING OR SUSPENDED, FOR EXTERIOR USE THEY CAN BE MOUNTED WITHOUT RESTRICTIONS.





230V
50Hz



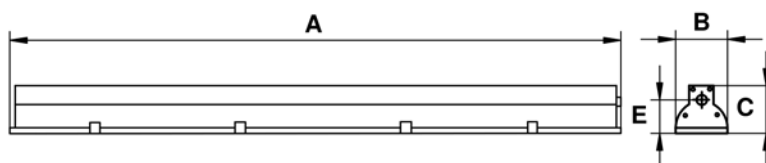
IP65



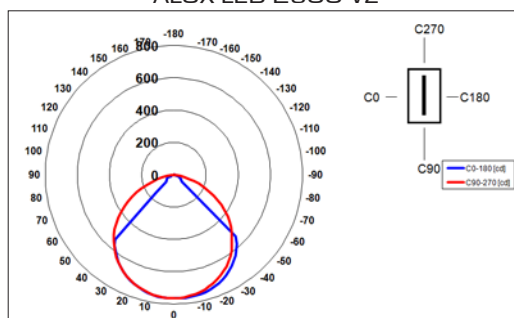
ta...25°C



Kod ref.	Typ oprawy	Str.lumeny(lm)	Barwa sw. (K)	CRI	Moc (W)	A (mm)	B (mm)	C (mm)	E (mm)	Waga (kg)	Klasa EN
LS 00039	ALOX-228 LED 2600 VZ	2600	3000K, 4000K	>80	18W	1225	110	75	55	4,1	A+
LS 00039	ALOX-235 LED 3250 VZ	3250	3000K, 4000K	>80	23W	1525	110	75	55	5,1	A+
LS 00040	ALOX-214 LED 2200 SL	2200	3000K, 4000K	>80	13W	635	110	75	55	2,4	A+
LS 00041	ALOX-228 LED 4400 SL	4400	3000K, 4000K	>80	25W	1225	110	75	55	4,1	A+
LS 00042	ALOX-235 LED 5500 SL	5500	3000K, 4000K	>80	31W	1525	110	75	55	5,1	A+
LS 00043	ALOX-214 LED 1000 VI	1000	4000K	>80	10W	635	110	75	55	2,4	A
LS 00044	ALOX-228 LED 2000 VI	2000	4000K	>80	20W	1225	110	75	55	4,1	A
LS 00045	ALOX-235 LED 2500 VI	2500	4000K	>80	26W	1525	110	75	55	5,1	A



ALOX LED 2600 VZ



TEVA LED



FIELD OF APPLICATION

TEVA LED LUMINAIRES HAVE IP65 PROTECTION. THE LUMINAIRES ARE MADE BY CO-EXTRUDED PROCESS, THEREFORE CLIPS ARE NOT USED FOR FIXING THE DIFFUSER, BODY AND DIFFUSER ARE INTEGRATED. WIRING CAN BE DONE EASILY INTO THE TERMINAL BLOCK BRACKET PLACED AT THE END OF THE LUMINAIRE. IT IS SUGGESTED FOR ILLUMINATION OF WAREHOUSES, CORRIDORS, GARAGES, STORES.

BASE MATERIAL

HOUSING OF LUMINAIRE: CO-EXTRUDED POLYCARBONATE (PC) IN COLOUR GREY AND OPAL

GASKET: AGING RESISTANT SILICONE

CABLE ROUTING: THROUGH PLASTIC GLAND

INSTALLATION

THE LUMINAIRES CAN BE MOUNTED ONTO CEILINGS OR SUSPENDED.

IN CASE OF EXTERIOR USAGE, THE LUMINAIRES HAVE TO BE PROTECTED FROM WEATHER CONDITIONS, MUST BE MOUNTED IN ROOFED ZONE.

TO DETERMINE IF THE LUMINAIRE IS APPLICABLE IN A CHEMICAL ENVIRONMENT, PLEASE SEE





230V
50Hz



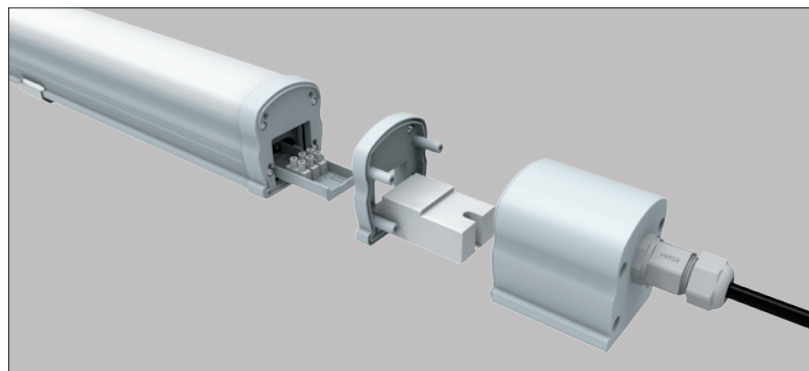
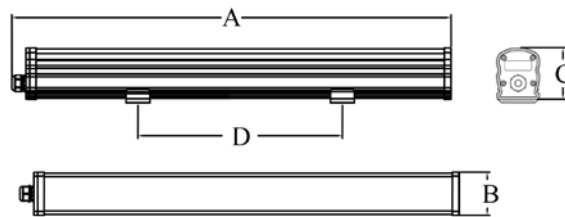
IP65



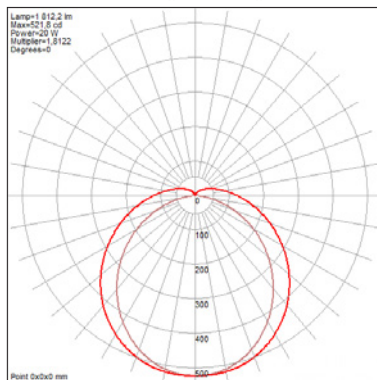
ta...25°C



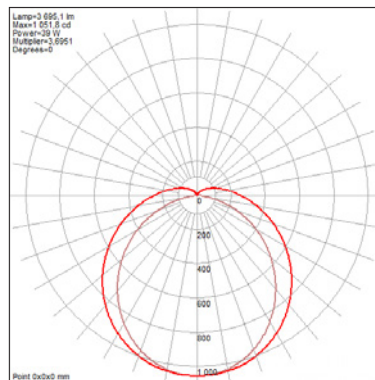
Kod ref.	Typ oprawy	Str.lumeny (lm)	Barwa sw. (K)	CRI	Moc(W)	A (mm)	B (mm)	C (mm)	D (mm)	Waga (kg)	Klasa EN
LS 00046	TEVA-18 LED 1800	1800	4000K	>80	18W	656	64	76	300	0,5	A
LS 00047	TEVA-40 LED 4000	4000	4000K	>80	40W	1256	64	76	600	0,8	A
LS 00048	TEVA-50 LED 5000	5000	4000K	>80	50W	1556	64	76	750	1,2	A



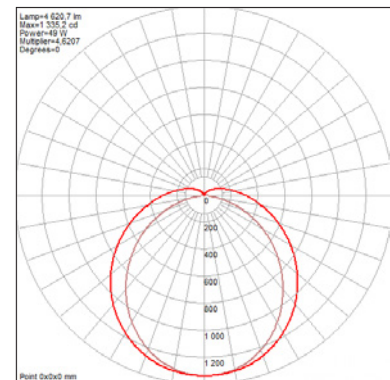
TEVA-18 LED 1800



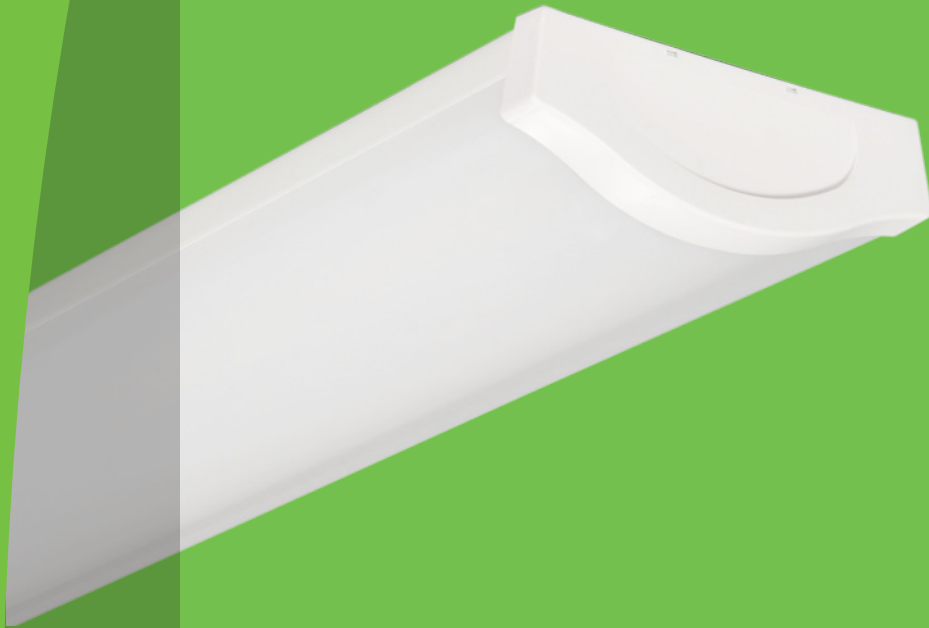
TEVA-40 LED 4000



TEVA-50 LED 5000



STM LUX IP44 LED



FIELD OF APPLICATION

THE STM LUX IP44 LED TYPE OF LUMINAIRE IS APPLICABLE FOR ILLUMINATION OF HOSPITALS, SCHOOLS, PUBLIC INSTITUTIONS, WHERE SMALL AMOUNT OF DUST AND MOISTURE FORMS.

BASE MATERIAL

MECHANIC SHEET: STEEL SHEET PAINTED WITH EPOXY POLYESTER BASED PAINT IN RAL 9003 COLOUR

DIFFUSER: EXTRUDED POLYSTYRENE (PS), WITH UV RESISTANT ADDITIVE IN OPAL DESIGN

LAMP END: INJECTED D POLYSTYRENE (PS)

INSTALLATION

THE LUMINAIRES ARE SURFACE MOUNTED.





230V
50Hz



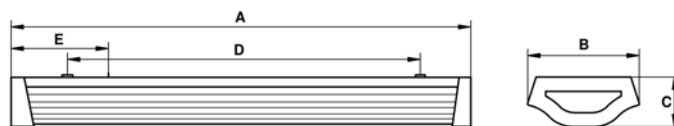
IP44



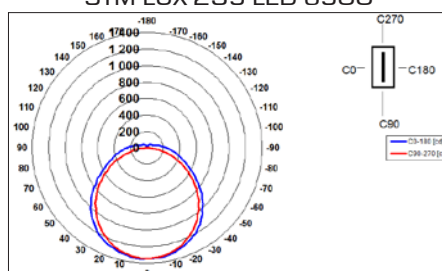
ta...25°C



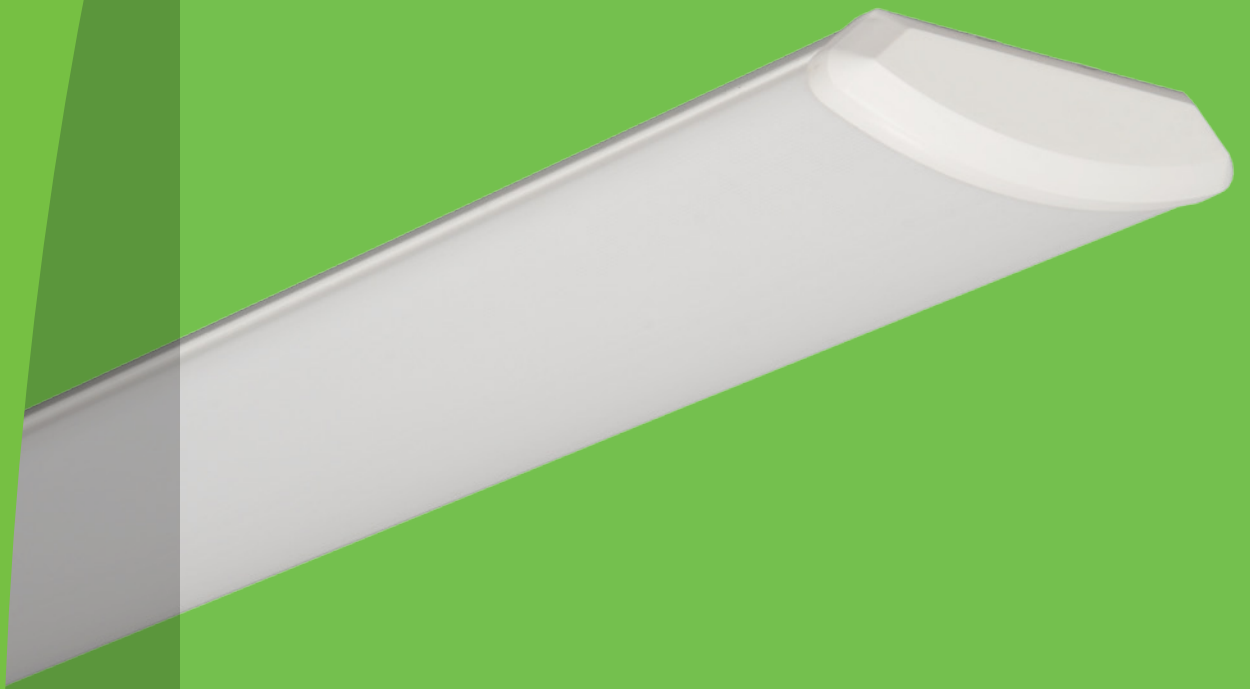
Kod ref.	Typ oprawy	Str. lumeny(lm)	Barwa sw. (K)	CRI	Moc	A (mm)	B (mm)	C (mm)	D (mm)	E (mm)	Waga (kg)	Klasa EN
LS 00049	STM LUX-214 IP44 LED 2600 VZ	2600	3000K, 4000K	>80	18W	587	200	70	520	140	1,9	A+
LS 00050	STM LUX-228 IP44 LED 5200 VZ	5200	3000K, 4000K	>80	36W	1205	200	70	1040	163	2,5	A+
LS 00051	STM LUX-235 IP44 LED 6500 VZ	6500	3000K, 4000K	>80	45W	1497	200	70	1280	247	3,1	A+
LS 00052	STM LUX-214 IP44 LED 4400 SL	4400	3000K, 4000K	>80	25W	587	200	70	520	140	1,9	A+
LS 00053	STM LUX-228 IP44 LED 8800 SL	8800	3000K, 4000K	>80	50W	1205	200	70	1040	163	2,5	A+
LS 00054	STM LUX-235 IP44 LED 9500 SL	9500	3000K, 4000K	>80	63W	1497	200	70	1280	247	3,1	A+
LS 00055	STM LUX-214 IP44 LED 2000 VI	2000	4000K	>80	20W	587	200	70	520	140	1,9	A
LS 00056	STM LUX-228 IP44 LED 4000 VI	4000	4000K	>80	41W	1205	200	70	1040	163	2,5	A
LS 00057	STM LUX-235 IP44 LED 5000 VI	5000	4000K	>80	51W	1497	200	70	1280	247	3,1	A



STM LUX-235 LED 6500



STM PLAST LED



FIELD OF APPLICATION

STM PLAST LED TYPE OF LUMINAIRE IS APPLICABLE FOR ILLUMINATION OF HOSPITALS, SCHOOLS, PUBLIC INSTITUTIONS.

BASE MATERIAL

MECHANIC SHEET: STEEL SHEET PAINTED WITH EPOXY POLYESTER BASED PAINT IN RAL 9003 COLOUR

DIFFUSER: EXTRUDED POLYSTYRENE (PS), WITH UV RESISTANT ADDITIVE IN OPAL DESIGN

LAMP END: INJECTED POLYSTYRENE (PS)

FIXING

THE LUMINAIRES ARE SURFACE MOUNTED AND CAN BE SUSPENDED.





230V
50Hz



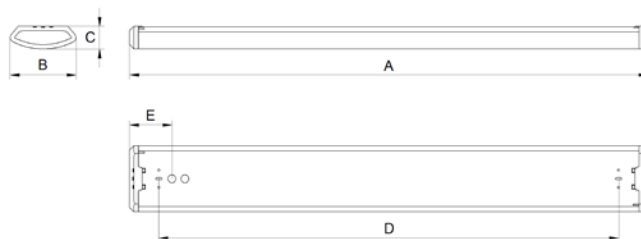
IP20



ta...25°C



Kod ref.	Typ oprawy	Str. lumeny (lm)	Barwa sw. (K)	CRI	Moc (W)	A (mm)	B (mm)	C (mm)	D (mm)	E (mm)	Waga (kg)	Klasa EN
LS 00058	STM PLAST-214 LED 2600 VZ	2600	3000K, 4000K	>80	18W	640	153	60	500	97,5	1,0	A+
LS 00059	STM PLAST-228 LED 5200 VZ	5200	3000K, 4000K	>80	36W	1200	153	60	1060	97,5	1,5	A+
LS 00060	STM PLAST-235 LED 6500 VZ	6500	3000K, 4000K	>80	45W	1480	153	60	1340	97,5	1,8	A+
LS 00061	STM PLAST-214 LED 4400 SL	4400	3000K, 4000K	>80	25W	640	153	60	500	97,5	1,0	A+
LS 00062	STM PLAST-228 LED 8800 SL	8800	3000K, 4000K	>80	50W	1200	153	60	1060	97,5	1,5	A+
LS 00063	STM PLAST-235 LED 9500 SL	9500	3000K, 4000K	>80	63W	1480	153	60	1340	97,5	1,8	A+
LS 00064	STM PLAST-214 LED 2000 VI	2000	4000K	>80	20W	640	153	60	500	97,5	1,0	A
LS 00065	STM PLAST-228 LED 4000 VI	4000	4000K	>80	41W	1200	153	60	1060	97,5	1,5	A
LS 00066	STM PLAST-235 LED 5000 VI	5000	4000K	>80	51W	1480	153	60	1340	97,5	1,8	A



STM NEW IP44 LED



FIELD OF APPLICATION

THE IP44 VERSION OF THE STM NEW LED RANGE OF LUMINAIRES IS APPLICABLE FOR GENERAL ILLUMINATION OF SOCIAL ROOMS OF HOSPITALS, SCHOOLS, PUBLIC INSTITUTIONS, WHERE SMALL AMOUNT OF DUST AND MOISTURE FORMS AND ENERGY EFFICIENT OPERATION IS IMPORTANT.

BASE MATERIAL

MECHANIC SHEET: EPOXY POLYESTER BASED PAINTED STEEL SHEET IN RAL9003 COLOUR.

DIFFUSER: EXTRUDED POLYCARBONATE (PC) WITH PRISMATIC SURFACE, IN OPAL VERSION.

LAMP END: INJECTION MOLDED POLYSTYRENE (PS)

FIXING

THE LUMINAIRES ARE SURFACE MOUNTED.





230V
50Hz



IP44



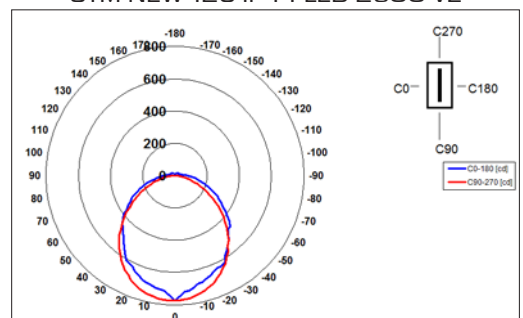
ta...25°C



Kod ref.	Typ oprawy	Str. lumeny (lm)	Barwa sw. (K)	CRI	Moc (W)	A (mm)	B (mm)	C (mm)	D (mm)	E (mm)	Waga (kg)	Klasa EN
LS 00067	STM NEW-128 IP44 LED 2600 VZ	2600	3000K, 4000K	>80	18W	1155	145	70	1025	95	2,1	A+
LS 00068	STM NEW-135 IP44 LED 3250 VZ	3250	3000K, 4000K	>80	23W	1435	145	70	1325	95	2,5	A+
LS 00069	STM NEW-214 IP44 LED 2600 VZ	2600	3000K, 4000K	>80	18W	595	145	70	470	95	1,1	A+
LS 00070	STM NEW-228 IP44 LED 5200 VZ	5200	3000K, 4000K	>80	36W	1155	145	70	1025	95	2,2	A+
LS 00071	STM NEW-235 IP44 LED 6500 VZ	6500	3000K, 4000K	>80	45W	1435	145	70	1325	95	2,6	A+
LS 00072	STM NEW-114 IP44 LED 2200 SL	2200	3000K, 4000K	>80	13W	595	145	70	470	95	1,1	A+
LS 00073	STM NEW-128 IP44 LED 4400 SL	4400	3000K, 4000K	>80	25W	1155	145	70	1025	95	2,1	A+
LS 00074	STM NEW-135 IP44 LED 5500 SL	5500	3000K, 4000K	>80	31W	1435	145	70	1325	95	2,5	A+
LS 00075	STM NEW-214 IP44 LED 4400 SL	4400	3000K, 4000K	>80	25W	595	145	70	470	95	1,2	A+
LS 00076	STM NEW-228 IP44 LED 5200 SL	8800	3000K, 4000K	>80	50W	1155	145	70	1025	95	2,2	A+
LS 00077	STM NEW-114 IP44 LED 1000 VI	1000	4000K	>80	10W	595	145	70	469	95	1,1	A
LS 00078	STM NEW-128 IP44 LED 2000 VI	2000	4000K	>80	20W	1155	145	70	1025	95	2,1	A
LS 00079	STM NEW-135 IP44 LED 2500 VI	2500	4000K	>80	26W	1435	145	70	1325	95	2,5	A
LS 00080	STM NEW-214 IP44 LED 2000 VI	2000	4000K	>80	20W	595	145	70	469	95	1,2	A
LS 00081	STM NEW-228 IP44 LED 4000 VI	4000	4000K	>80	41W	1155	145	70	1025	95	2,2	A
LS 00082	STM NEW-235 IP44 LED 5000 VI	5000	4000K	>80	51W	1435	145	70	1325	95	2,6	A



STM NEW-128 IP44 LED 2600 VZ



STREV IP54 LED



FIELD OF APPLICATION

STREV LED RANGE OF LUMINAIRES THANKS TO ITS IP54 PROTECTION SERVES FOR ILLUMINATION OF FACTORIES, WORKSHOPS AND OTHER WORK SPACES WITH DUSTY AND HUMID ATMOSPHERE.

BASE MATERIAL

HOUSING OF LUMINAIRE: INJECTED POLYCARBONATE (PC) IN GREY COLOUR

GEAR-TRAY: STEEL SHEET, POWDER PAINTED IN WHITE

DIFFUSER: INJECTED POLYCARBONATE (PC) WITH UV RESISTANCE ADDITIVE.

GASKET: FOAM RUBBER, GLUED INTO THE HOUSING OF THE LUMINAIRE

FIXING IF THE DIFFUSER: DONE WITH PLASTIC CLIPS

INSTALLATION

THE LUMINAIRES CAN BE MOUNTED ONTO CEILINGS.





230V
50Hz



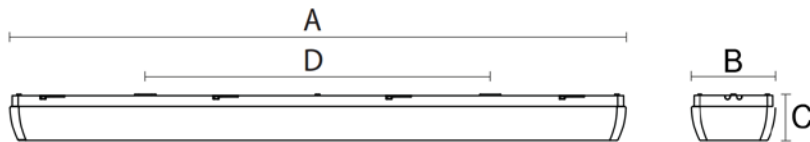
IP54



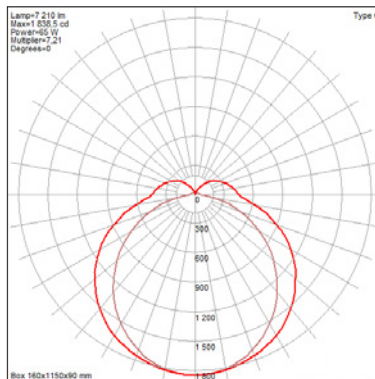
ta...25°C



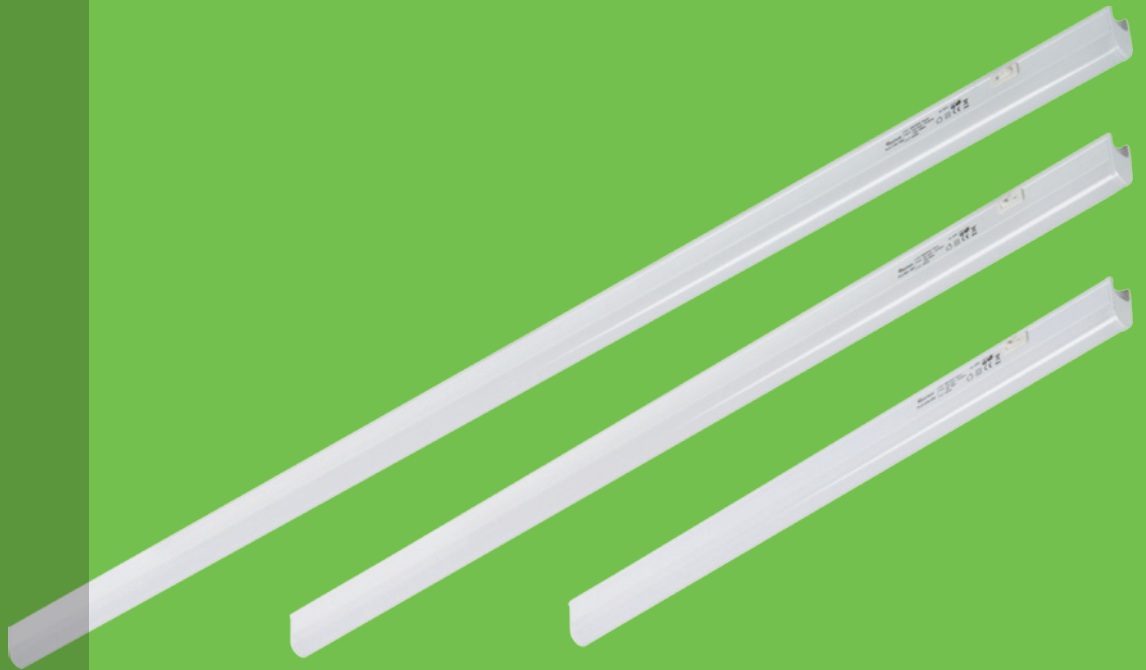
Kod ref.	Typ oprawy	Str.lumeny (lm)	Barwa sw. (K)	CRI	Moc (W)	A (mm)	B (mm)	C (mm)	D (mm)	Waga (kg)	Klasa EN
LS 00083	STREV-128 IP54 LED 2600 VZ	2600	3000K, 4000K	>80	18W	1160	109	85	650	2,7	A+
LS 00084	STREV-228 IP54 LED 5200 VZ	5200	3000K, 4000K	>80	36W	1160	159	85	650	2,7	A+
LS 00085	STREV-128 IP54 LED 4400 SL	4400	3000K, 4000K	>80	25W	1160	109	85	650	2,7	A+
LS 00086	STREV-228 IP54 LED 8800 SL	8800	3000K, 4000K	>80	50W	1160	159	85	650	2,7	A+
LS 00087	STREV-128 IP54 LED 2000 VI	2000	4000K	>80	20W	1160	109	85	650	2,7	A
LS 00088	STREV-228 IP54 LED 4000 VI	4000	4000K	>80	41W	1160	159	85	650	2,7	A



STREV-228 IP54 LED 8800 SL



ST LED



FIELD OF APPLICATION

THE ST LED RANGE OF LUMINAIRES IS APPLICABLE FOR ILLUMINATION OF STOREFRONTS, SHOPS, FURNITURE, MIRRORS OR IN FLATS FOR LOCAL ILLUMINATION.

BASE MATERIAL

BODY: PC BODY EQUIPPED WITH SWITCH

INSTALLATION

LUMINAIRES CAN BE MOUNTED ONTO CEILING, SIDE WALL, FURNITURE WITH THE SUPPLIED PLASTIC FIXING ELEMENTS.

ACCESSORIES

1,8M NETWORK CABLE, 15CM CONNECTING CABLE AND STIFF PLUG.





230V
50Hz



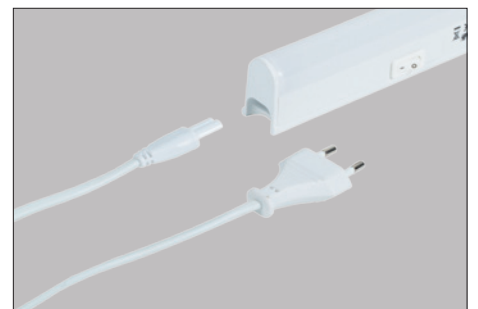
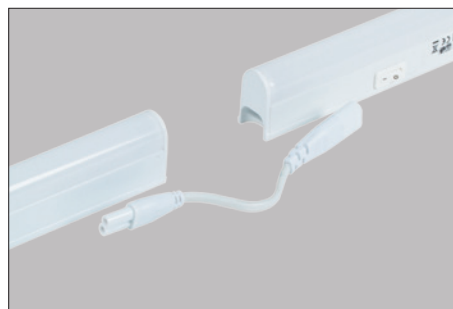
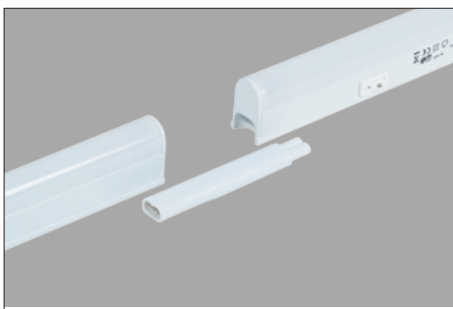
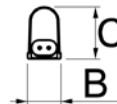
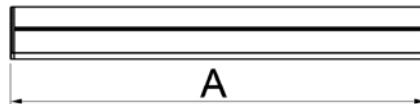
IP20



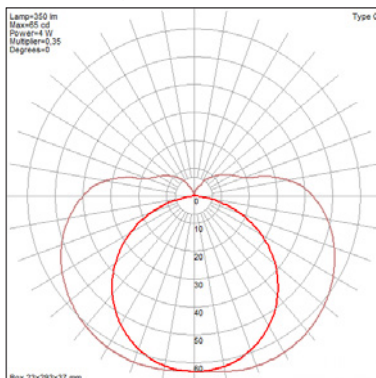
ta...25°C



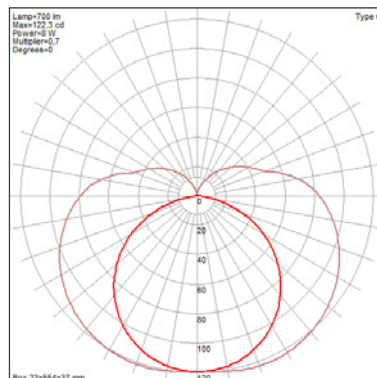
Kod ref.	Typ oprawy	Str.lumeny (lm)	Barwa sw. (K)	CRI	Moc (W)	A (mm)	B (mm)	C (mm)	Waga (kg)	Klasa EN
LS 00089	ST-4 LED 350	350	4000K	>80	4W	293	23,5	37	0,13	A
LS 00090	ST-8 LED 700	700	4000K	>80	8W	554	23,5	37	0,15	A
LS 00091	ST-10 LED 950	950	4000K	>80	10W	854	23,5	37	0,22	A
LS 00092	ST-13 LED 1150	1150	4000K	>80	13W	854	23,5	37	0,22	A
LS 00093	ST-14 LED 1300	1300	4000K	>80	14W	1154	23,5	37	0,28	A
LS 00094	ST-17 LED 1500	1500	4000K	>80	17W	1154	23,5	37	0,28	A
LS 00095	ST-18 LED 1650	1650	4000K	>80	18W	1454	23,5	37	0,35	A
LS 00096	ST-21 LED 2050	2050	4000K	>80	21W	1454	23,5	37	0,35	A



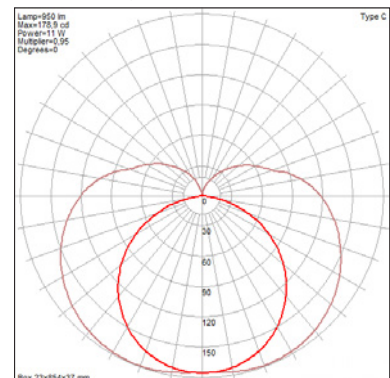
ST LED-4 350



ST LED-8 700



ST LED-10 950



VIKTORIA LED



FIELD OF APPLICATION

VIKTORIA AND SABRINA LED RANGE OF LUMINAIRES DUE TO IP 44 PROTECTION CAN BE A PERFECT CHOICE FOR ILLUMINATION OF MIRRORS OF LAVATORIES.

SABRINA HAS A BUILT-IN IP 44 SOCKET OUTLET

BASE MATERIAL

HOUSING OF THE LUMINAIRE: STEEL SHEET PAINTED WITH EPOXY POLYESTER BASED PAINT WHITE COLOUR

DIFFUSER: POLYMETHYL METHACRYLATE

LED GEAR TRAY: ALUMINIUM

INSTALLATION

THE LUMINAIRES CAN BE MOUNTED ONTO CEILING, SIDEWALLS.





230V
50Hz



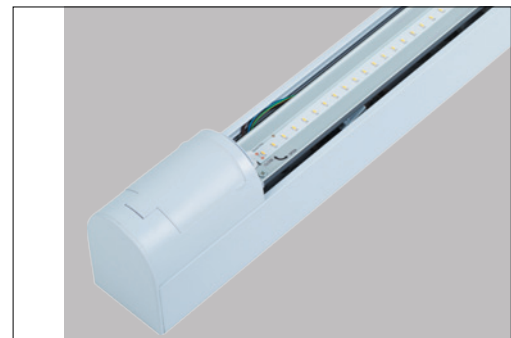
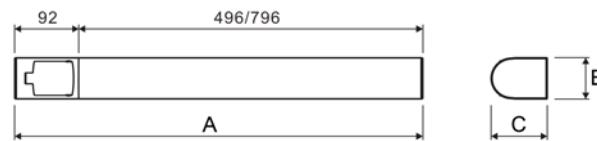
IP44



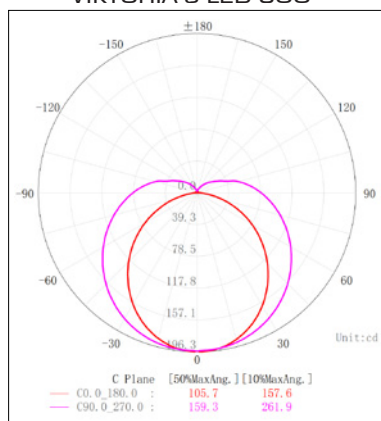
ta...25°C



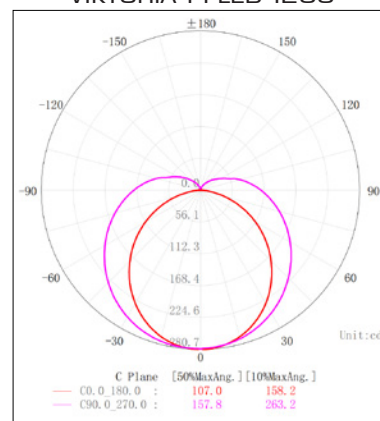
Kod ref.	Typ oprawy	Str. lumeny (lm)	Barwa sw. (K)	CRI	Moc (W)	GNAZDO	A (mm)	B (mm)	C (mm)	Waga (kg)	Klasa EN
LS 00097	SABRINA-9 LED 800	800	4000K	>80	9W	Tak	588	60	81	0,8	A
LS 00098	VIKTORIA-9 LED 800	800	4000K	>80	9W	Nie	588	60	81	0,8	A
LS 00099	SABRINA-14 LED 1200	1200	>80	14W	Tak	888	60	81	1,2	A	
LS 00100	VIKTORIA-14 LED 1200	1200	4000K	>80	14W	Nie	888	60	81	1,2	A



VIKTORIA-9 LED 800



VIKTORIA-14 LED 1200



STKBO LED



FIELD OF APPLICATION

THE STKBO LED RANGE OF LUMINAIRE IS APPLICABLE FOR GENERAL AND LOCAL ILLUMINATION OF FLATS, PUBLIC INSTITUTIONS, WHERE ENERGY EFFICIENT OPERATION AND LONGEVITY OF LIGHT SOURCES ARE IMPORTANT.

BASE MATERIAL

MECHANIC SHEET: EPOXY POLYESTER BASED PAINTED STEEL SHEET IN RAL 9003 COLOUR

DIFFUSER: OPAL VACUUM FORMATTED PMMA

DIFFUSER FIXING: WITH PLASTIC CLIPS.

FIXING

THE LUMINAIRES ARE SURFACE MOUNTED.





230V
50Hz



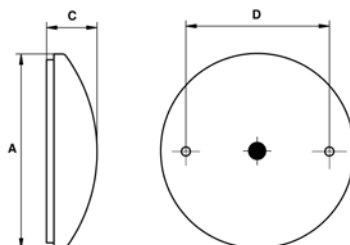
IP20



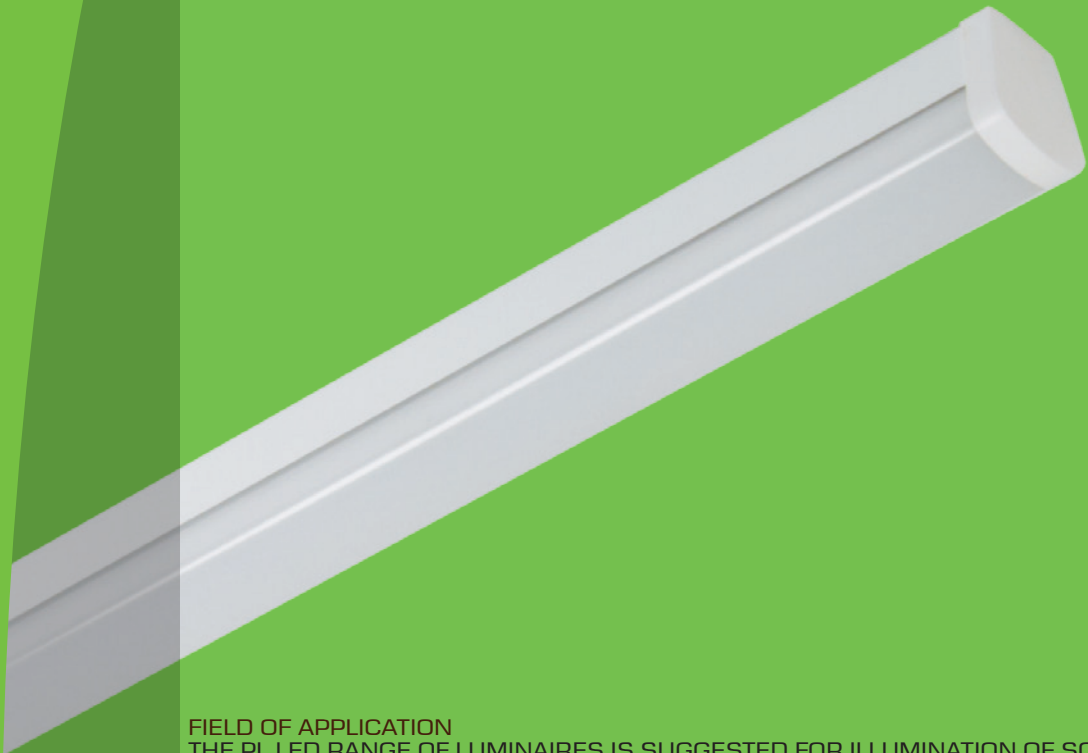
ta...25°C



Kod ref.	Typ oprawy	Str.lumeny (lm)	Barwa sw. (K)	CRI	Moc (W)	A (mm)	C (mm)	D (mm)	Waga (kg)	Klasa EN
LS 00101	STKBO-10 LED 900	900	4000K	>80	10W	290	90	65	0,9	A
LS 00102	STKBO-20 LED 1800	1800	4000K	>80	20W	385	100	65	1,1	A
LS 00103	STKBO-24 LED 2200	2200	4000K	>80	24W	385	100	65	1,1	A



PL LED



FIELD OF APPLICATION

THE PL LED RANGE OF LUMINAIRES IS SUGGESTED FOR ILLUMINATION OF SOCIAL ROOMS OF PUBLIC INSTITUTIONS, FACTORIES, WHERE LONG LIFE AND LOW OPERATING COST IS DEMANDED

BASE MATERIAL

HOUSING OF LUMINAIRE: STEEL SHEET PAINTED WITH EPOXY POLYESTER BASED POWDER PAINT IN COLOUR RAL 9003

DIFFUSER: EXTRUDED POLYCARBONATE (PC), WITH UV RESISTANT ADDITIVE IN OPAL VERSION

LAMP END: INJECTED ABS

INSTALLATION

THE LUMINAIRES CAN BE MOUNTED INTO THE CEILING.





230V
50Hz



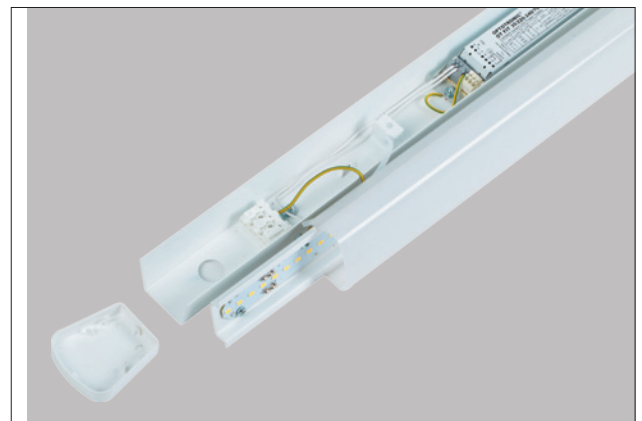
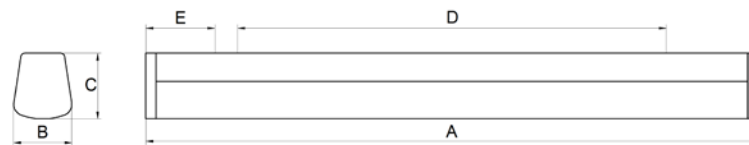
IP20



ta...25°C



Kod ref.	Typ oprawy	Str.lumeny (lm)	Barwa sw. (K)	CRI	Moc (W)	A (mm)	B (mm)	C (mm)	D (mm)	E (mm)	Waga (kg)	Klasa EN
LS 00104	PL-114 LED 2200 SL	2200	3000K, 4000K	>80	13W	600	57	65	420	50	1,2	A+
LS 00105	PL-128 LED 4400 SL	4400	3000K, 4000K	>80	25W	1160	57	65	800	50	1,5	A+
LS 00106	PL-135 LED 5500 SL	5500	3000K, 4000K	>80	31W	1440	57	65	1080	50	1,8	A+



GAMMA LED



FIELD OF APPLICATION

THE GAMMA LED RANGE OF LUMINAIRES BASED ON ITS IP65 PROTECTION IS SUGGESTED FOR GENERAL ILLUMINATION OF DUSTY, HUMID PLACES: COVERED PARKING, LAVATORIES, INDUSTRIAL FACILITIES, SERVING PLACES OF PUBLIC INSTITUTIONS. EASY INSTALLATION; IT CAN BE DONE WITHOUT THE DISASSEMBLING OF THE LUMINAIRE; ITS ELECTRICAL WIRING CAN BE DONE IN THE FOLDING LID COMPARTMENT PLACED ON THE BACKSIDE OF THE LUMINAIRE.

BASE MATERIAL

HOUSING OF LUMINAIRE: INJECTED POLYCARBONATE (PC)

DIFFUSER: OPAL POLYCARBONATE (PC)

GASKET: POLYURETHANE PLACED IN THE HOUSING OF LUMINAIRE

INSTALLATION

THE LUMINAIRES CAN BE MOUNTED INTO THE CEILING.





230V
50Hz



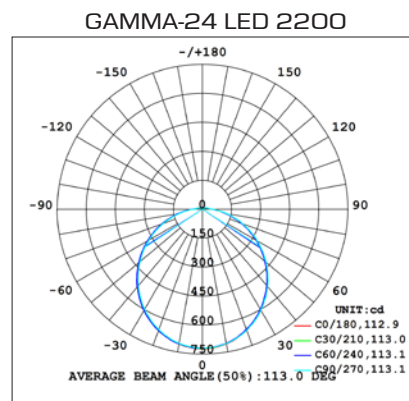
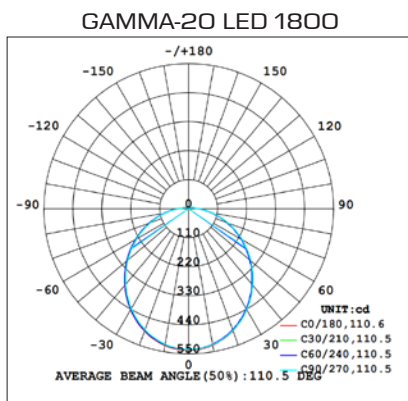
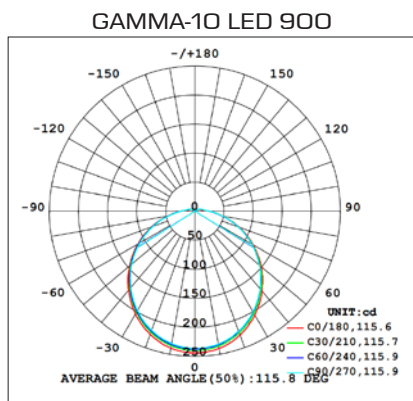
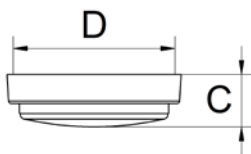
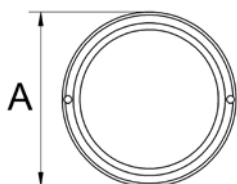
IP65



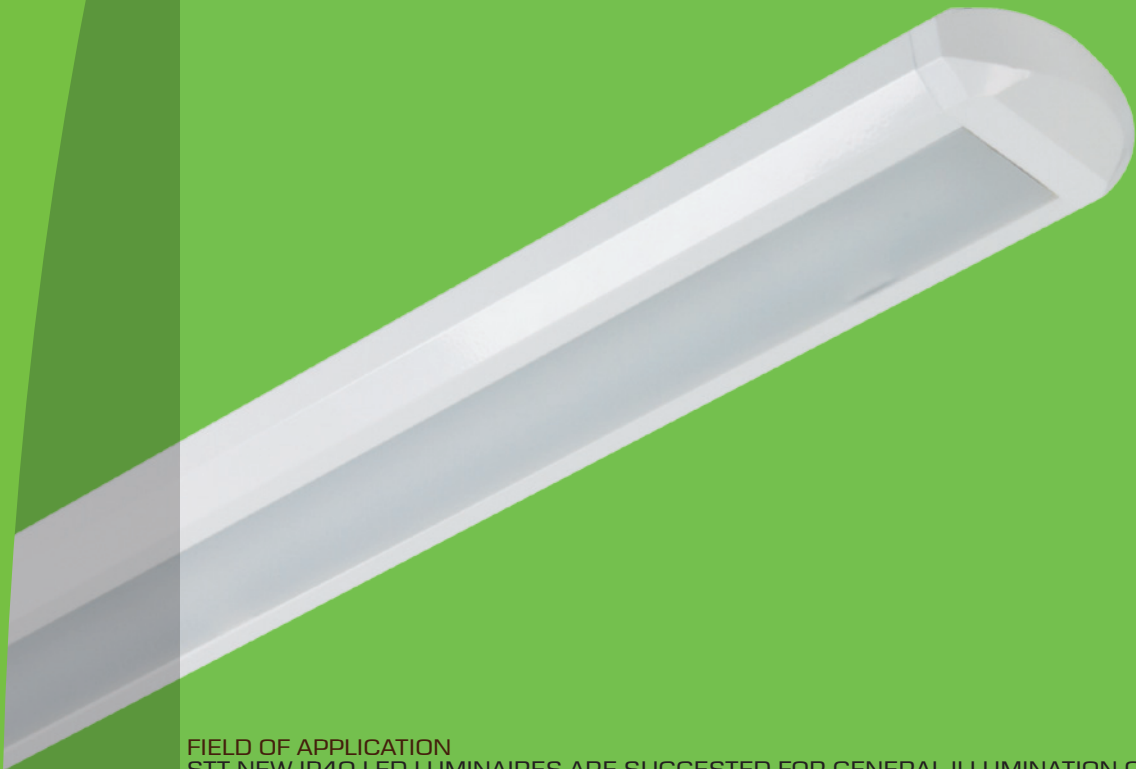
ta...25°C



Kod ref.	Typ oprawy	Str.lumeny (lm)	Barwa sw. (K)	CRI	Moc (W)	A (mm)	C (mm)	D (mm)	Waga (kg)	Klasa EN
LS 00107	GAMMA-10 LED 900	900	4000K	>80	10W	220	65	204	0.5	A
LS 00108	GAMMA-20 LED 1800	1800	4000K	>80	20W	280	71	263	0.7	A
LS 00109	GAMMA-24 LED 2200	2200	4000K	>80	24W	350	81	332	1.1	A



STT NEW IP40 LED



FIELD OF APPLICATION

STT NEW IP40 LED LUMINAIRES ARE SUGGESTED FOR GENERAL ILLUMINATION OF COMMERCIAL UNITS; DEPARTMENT STORES, SHOPS, OFFICES, WHERE ENERGY EFFICIENT OPERATION AND LONG LIFETIME OF LIGHT SOURCE IS IMPORTANT.

BASE MATERIAL

BASE MATERIAL: STEEL SHEET PAINTED WITH EPOXY POLYESTER BASED PAINT IN IN WHITE OR GREY COLOUR. LAMP ENDS HAVE THE SAME COLOUR AS THE BODY OF THE LUMINAIRE.

DIFFUSER: EXTRUDED OPAL POLYCARBONATE (PC).

INSTALLATION

THE LUMINAIRES CAN BE MOUNTED ONTO THE CEILING OR SUSPENDED.





230V
50Hz



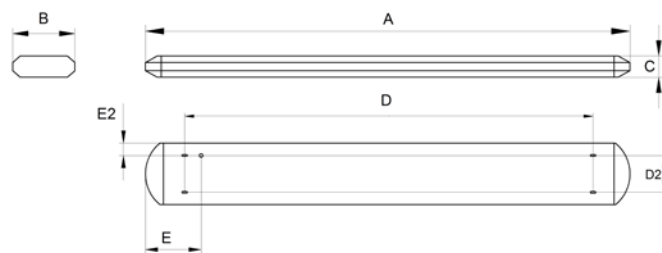
IP40



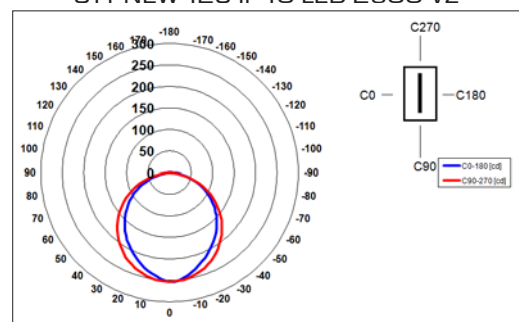
ta...25°C



Kod ref.	Typ oprawy	Str.lumeny (lm)	Barwa sw. (K)	CRI	Moc (W)	A (mm)	B (mm)	C (mm)	D (mm)	D2 (mm)	E (mm)	E2 (mm)	Waga (kg)	Klasa EN
LS 00110	STT NEW-128 IP40 LED 2600 VZ	2600	3000K, 4000K	>80	18W	1300	165	60	1020	100	215	35	3,1	A+
LS 00111	STT NEW-135 IP40 LED 3250 VZ	3250	3000K, 4000K	>80	23W	1590	165	60	1280	100	215	35	3,6	A+
LS 00112	STT NEW-128 IP40 LED 4400 SL	4400	3000K, 4000K	>80	25W	1300	165	60	1020	100	215	35	3,1	A+
LS 00113	STT NEW-135 IP40 LED 5500 SL	5500	3000K, 4000K	>80	31W	1590	165	60	1280	100	215	35	3,6	A+
LS 00114	STT NEW-128 IP40 LED 2000 VI	2000	4000K	>80	20W	1300	165	60	1020	100	215	35	3,1	A
LS 00115	STT NEW-135 IP40 LED 2500 VI	2500	4000K	>80	26W	1590	165	60	1280	100	215	35	3,6	A



STT NEW-128 IP40 LED 2600 VZ



STF LUX LED



FIELD OF APPLICATION

THE STF LUX LED RANGE OF LUMINAIRES IS SUGGESTED FOR GENERAL ILLUMINATION OF PUBLIC INSTITUTIONS, OFFICES, BANKS.

BASE MATERIAL

BODY OF LUMINAIRE: STEEL SHEET PAINTED WITH EPOXY POLYESTER BASED PAINT IN RAL 9003 COLOUR

DIFFUSER: EXTRUDED OPAL POLYCARBONATE (PC).

INSTALLATION

THE LUMINAIRES CAN BE MOUNTED ONTO THE CEILING OR SUSPENDED.





230V
50Hz



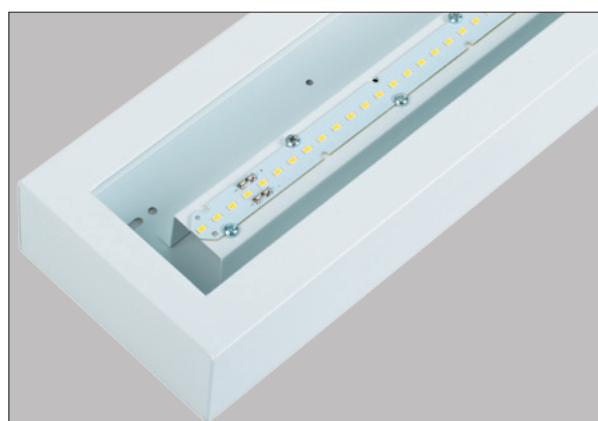
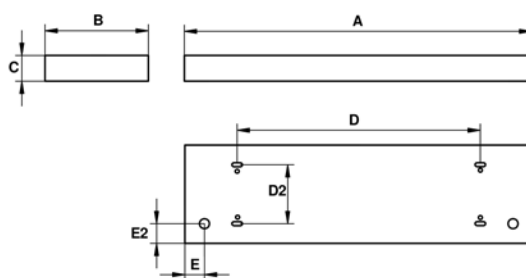
IP20



ta...25°C



Kod ref.	Typ oprawy	Str.lumeny (lm)	Barwa sw. (K)	CRI	Moc (W)	A (mm)	B (mm)	C (mm)	D (mm)	D2 (mm)	E (mm)	E2 (mm)	Waga (kg)	Klasa EN
LS 00116	STF LUX-128 LED 2600 VZ	2600	3000K, 4000K	>80	18W	1235	145	62	1130	85	30	30	3,2	A+
LS 00117	STF LUX-135 LED 3250 VZ	3250	3000K, 4000K	>80	23W	1500	145	62	1395	85	30	30	4,0	A+
LS 00118	STF LUX-114 LED 2200 SL	2200	3000K, 4000K	>80	13W	605	145	62	500	85	30	30	1,8	A+
LS 00119	STF LUX-128 LED 4400 SL	4400	3000K, 4000K	>80	25W	1235	145	62	1130	85	30	30	3,2	A+
LS 00120	STF LUX-135 LED 5500 SL	5500	3000K, 4000K	>80	31W	1500	145	62	1395	85	30	30	4,0	A+
LS 00121	STF LUX-114 LED 1000 VI	1000	4000K	>80	10W	605	145	62	500	85	30	30	1,8	A
LS 00122	STF LUX-128 LED 2000 VI	2000	4000K	>80	20W	1235	145	62	1130	85	30	30	3,2	A
LS 00123	STF LUX-135 LED 2500 VI	2500	4000K	>80	26W	1500	145	62	1395	85	30	30	4,0	A



STF/AL IP40 LED



FIELD OF APPLICATION

THE STF/AL IP40 LED RANGE OF LUMINAIRES IS APPLICABLE FOR GENERAL ILLUMINATION OF HEALTH INSTITUTIONS; HOSPITALS, MEDICAL CLINICS AND SUCH SPACES, WHERE FREQUENT CLEANING OF SURFACES IS REQUIRED, AND ALSO ENERGY SAVING OPERATION AND LONGEVITY OF LIGHT SOURCE IS IMPORTANT.

BASE MATERIAL

BODY OF LUMINAIRE: WHITE PAINTED STEEL SHEET.

DIFFUSER: OPAL POLYMETHIL METHACRYLATE (PMMA)

INSTALLING

THE LUMINAIRES CAN BE MOUNTED ONTO THE CEILING AND RECESSED INTO ARTIFICIAL CEILING.





230V
50Hz



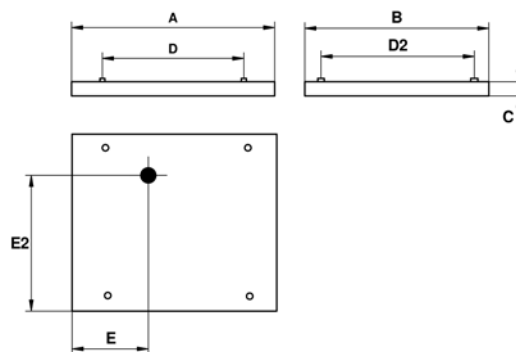
IP40



ta...25°C



Kod ref.	Typ oprawy	Str.lumeny (lm)	Barwa sw. (K)	CRI	Moc (W)	A (mm)	B (mm)	C (mm)	D (mm)	D2 (mm)	E (mm)	E2 (mm)	Waga (kg)	Klasa EN
LS 00124	STF/AL-214 IP40 LED 2600 VZ	2600	3000K, 4000K	>80	18W	595	295	55	490	175	305	25	2.8	A+
LS 00125	STF/AL-228 IP40 LED 5200 VZ	5200	3000K, 4000K	>80	36W	1195	295	55	910	130	665	25	3.9	A+
LS 00126	STF/AL-235 IP40 LED 6500 VZ	6500	3000K, 4000K	>80	45W	1495	295	55	1210	175	830	25	5.8	A+
LS 00127	STF/AL-414 IP40 LED 5200 VZ	5200	3000K, 4000K	>80	36W	595	595	55	392	392	30	420	3.9	A+
LS 00128	STF/AL-214 IP40 LED 4400 SL	4400	3000K, 4000K	>80	25W	595	295	55	490	175	305	25	2.8	A+
LS 00129	STF/AL-228 IP40 LED 8800 SL	8800	3000K, 4000K	>80	50W	1195	295	55	910	130	665	25	3.9	A+
LS 00130	STF/AL-414 IP40 LED 8800 SL	8800	3000K, 4000K	>80	50W	595	595	55	392	392	30	420	3.9	A+
LS 00131	STF/AL-214 IP40 LED 2000 VI	2000	4000K	>80	20W	595	295	55	490	175	305	25	2.8	A
LS 00132	STF/AL-228 IP40 LED 4000 VI	4000	4000K	>80	41W	1195	295	55	910	130	665	25	3.9	A
LS 00133	STF/AL-235 IP40 LED 5000 VI	5000	4000K	>80	51W	1495	295	55	1210	175	830	25	5.8	A
LS 00134	STF/AL-414 IP40 LED 4000 VI	4000	4000K	>80	41W	595	595	55	392	392	30	420	3.9	A
LS 00135	STF/AL-414 IP40 LED 3780 VO	3780	4000K	>80	42W	595	595	55	392	392	30	420	3.9	A



STF/AL DP LED



FIELD OF APPLICATION

THE STF/AL DP LED DOUBLE-PARABOLIC RANGE OF LUMINAIRES IS SUGGESTED FOR GENERAL ILLUMINATION OF PUBLIC INSTITUTIONS, OFFICES, BANKS.

BASE MATERIAL

BODY OF LUMINAIRE: WHITE PAINTED STEEL SHEET.

REFLECTOR GRID: MIRRORED ALUMINIUM SHEET; DOUBLE-PARABOLIC MIRROR FINISHED IN AN ANGLE OF 60°, WHITE PAINTED STEEL SHEETS BETWEEN THE GRIDS.

FIXING

THE LUMINAIRES CAN BE MOUNTED ONTO A CEILING AND RECESSED INTO ARTIFICIAL CEILING.

MANUFACTURING

THE LUMINAIRES ARE AVAILABLE IN EVG, DIMM EVG, INVERTER VERSION.

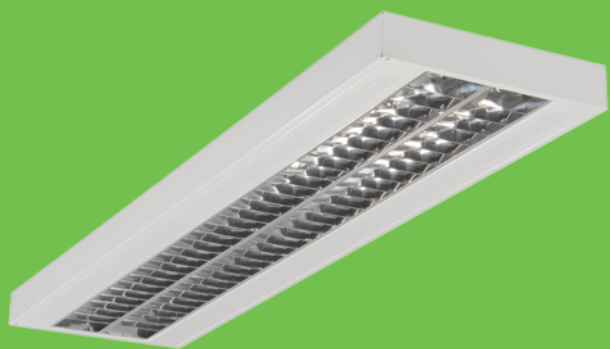


230V
50Hz

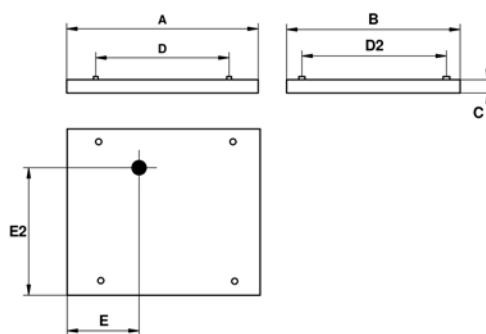
IP20



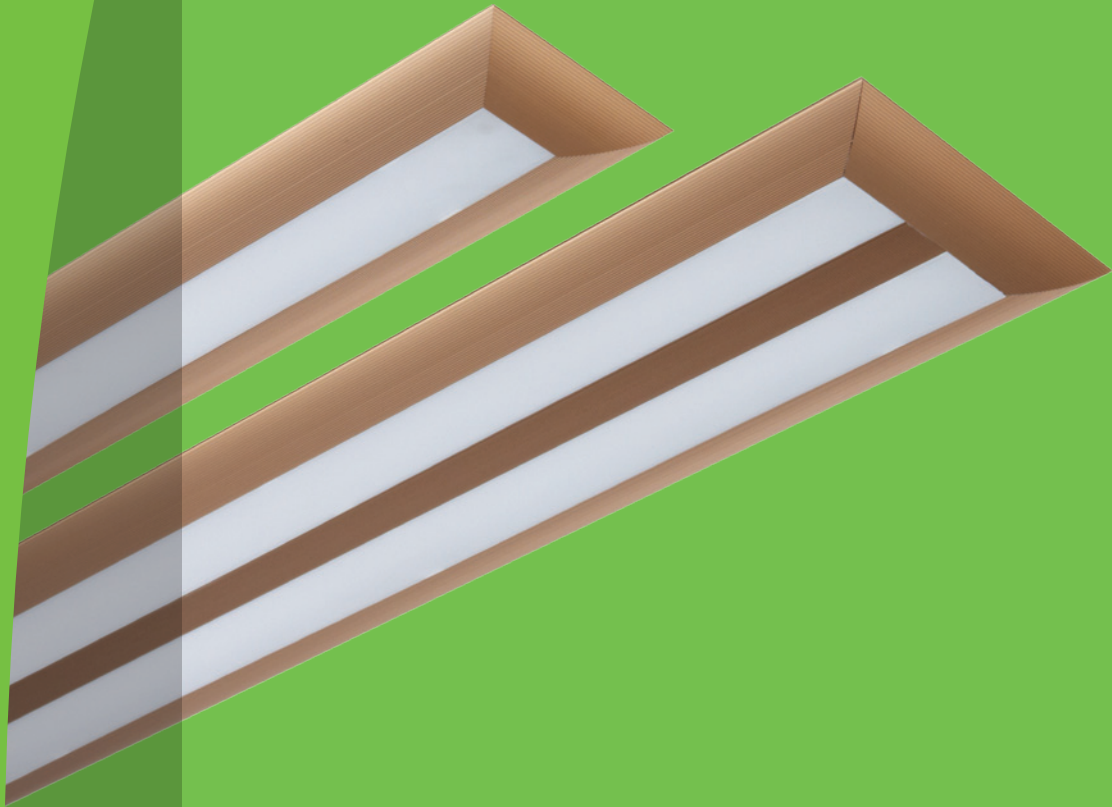
ta...25°C



Kod ref.	Typ oprawy	Str.lumeny (lm)	Barwa sw. (K)	CRI	Moc (W)	A (mm)	B (mm)	C (mm)	D (mm)	D2 (mm)	E (mm)	E2 (mm)	Waga (kg)	Klasa EN
LS 00136	STF/AL-214 DP LED 2600 VZ	2600	3000K, 4000K	>80	18W	595	295	55	490	175	305	25	2,8	A+
LS 00137	STF/AL-228 DP LED 5200 VZ	5200	3000K, 4000K	>80	36W	1195	295	55	910	130	665	25	3,9	A+
LS 00138	STF/AL-235 DP LED 6500 VZ	6500	3000K, 4000K	>80	45W	1495	295	55	1210	175	830	25	5,8	A+
LS 00139	STF/AL-414 DP LED 5200 VZ	5200	3000K, 4000K	>80	36W	595	595	55	415	392	25	300	3,5	A+
LS 00140	STF/AL-214 DP LED 4400 SL	4400	3000K, 4000K	>80	25W	595	295	55	490	175	305	25	2,8	A+
LS 00141	STF/AL-228 DP LED 8800 SL	8800	3000K, 4000K	>80	50W	1195	295	55	910	130	665	25	3,9	A+
LS 00142	STF/AL-414 DP LED 8800 SL	8800	3000K, 4000K	>80	50W	595	595	55	415	392	25	300	3,5	A+
LS 00143	STF/AL-214 DP LED 2000 VI	2000	4000K	>80	20W	595	295	55	490	175	305	25	2,8	A
LS 00144	STF/AL-228 DP LED 4000 VI	4000	4000K	>80	41W	1195	295	55	910	130	665	25	3,9	A
LS 00145	STF/AL-235 DP LED 5000 VI	5000	4000K	>80	51W	1495	295	55	1210	175	830	25	5,8	A
LS 00146	STF/AL-414 DP LED 4000 VI	4000	4000K	>80	41W	595	595	55	415	392	25	300	3,5	A



PARIS LED



FIELD OF APPLICATION

THE PARIS LED RANGE OF LUMINAIRES WITH DIFFUSER IS SUITABLE FOR GENERAL ILLUMINATION OF PUBLIC INSTITUTIONS, EXCLUSIVE SPACES, OFFICES BANKS.

BASE MATERIAL

BODY OF LUMINAIRE: EXTRUDED ALUMINIUM PROFILE EITHER ANODISED TO BRONZE COLOUR, OR EPOXY POLYESTER POWDER COATED IN THE CHOSEN COLOUR OF THE RAL COLOUR SCALE.

INSTALLING

THE LUMINAIRES CAN BE MOUNTED ONTO THE CEILING OR SUSPENDED.

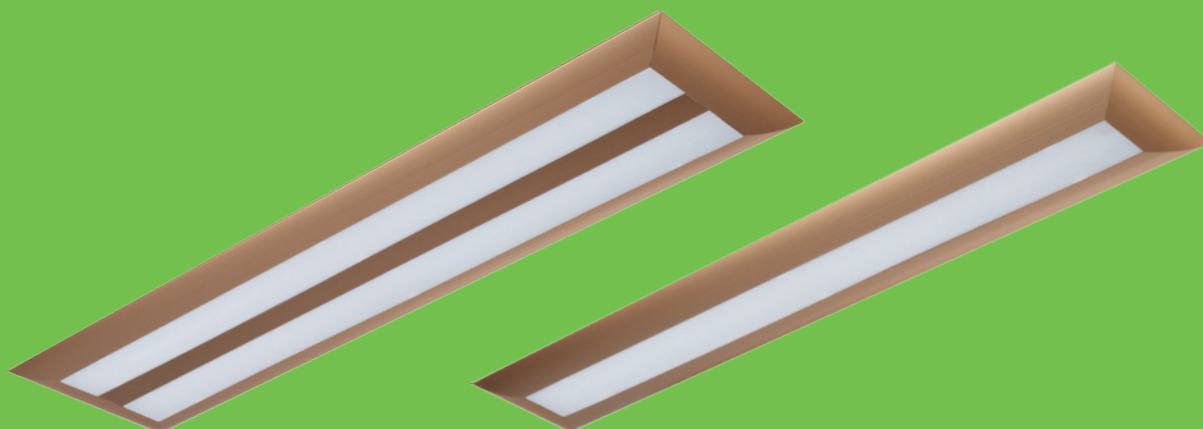


230V
50Hz

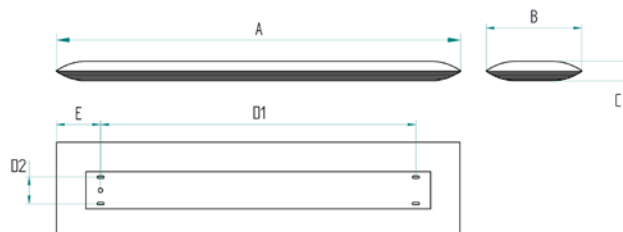
IP20



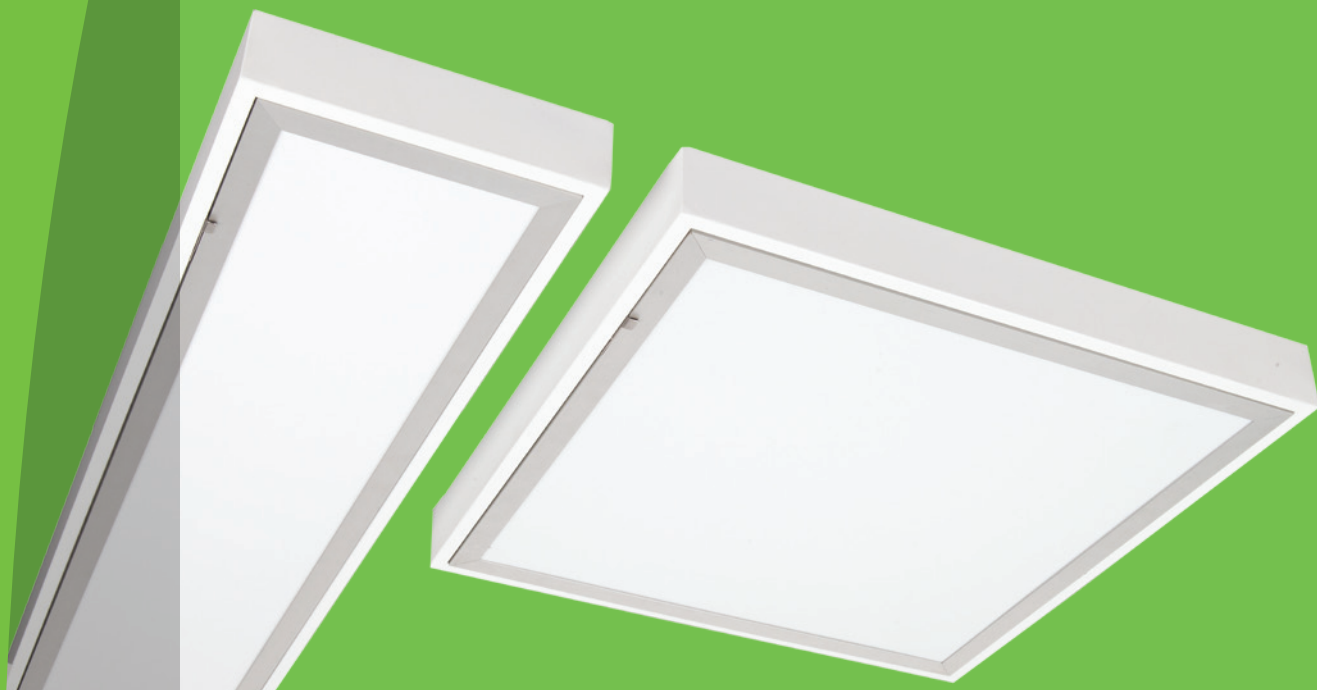
ta...25°C



Kod ref.	Typ oprawy	Str. lumeny (lm)	Barwa sw. (K)	CRI	Moc (W)	A (mm)	B (mm)	C (mm)	D (mm)	D2 (mm)	E (mm)	E2 (mm)	Waga (kg)	Klasa EN
LS 00147	PARIS-128 LED 2600 VZ	2600	3000K, 4000K	>80	18W	1272	210	45	1010	70	75	105	5,2	A+
LS 00148	PARIS-135 LED 3250 VZ	3250	3000K, 4000K	>80	23W	1572	210	45	1310	70	75	105	6,1	A+
LS 00149	PARIS-214 LED 2600 VZ	2600	3000K, 4000K	>80	18W	650	346	45	580	210	100	150	4,2	A+
LS 00150	PARIS-228 LED 5200 VZ	5200	3000K, 4000K	>80	36W	1272	346	45	1010	210	100	175	5,3	A+
LS 00151	PARIS-235 LED 6500 VZ	6500	3000K, 4000K	>80	45W	1572	346	45	1310	210	100	175	6,2	A+
LS 00152	PARIS-414 LED 5200 VZ	5200	3000K, 4000K	>80	36W	650	637	45	595	582	90	150	5,2	A+
LS 00153	PARIS-114 LED 2200 SL	2200	3000K, 4000K	>80	13W	650	210	45	580	70	75	105	4,1	A+
LS 00154	PARIS-128 LED 4400 SL	4400	3000K, 4000K	>80	25W	1272	210	45	1010	70	75	105	5,2	A+
LS 00155	PARIS-135 LED 5500 SL	5500	3000K, 4000K	>80	31W	1572	210	45	1310	70	75	105	6,1	A+
LS 00156	PARIS-214 LED 4400 SL	4400	3000K, 4000K	>80	25W	650	346	45	580	210	100	150	4,2	A+
LS 00157	PARIS-228 LED 8800 SL	8800	3000K, 4000K	>80	50W	1272	346	45	1010	210	100	175	5,3	A+
LS 00158	PARIS-414 LED 8800 SL	8800	3000K, 4000K	>80	50W	650	637	45	595	582	90	150	5,2	A+
LS 00159	PARIS-114 LED 1000 VI	1000	4000K	>80	10W	650	210	45	580	70	75	105	4,1	A
LS 00160	PARIS-128 LED 2000 VI	2000	4000K	>80	20W	1272	210	45	1010	70	75	105	5,2	A
LS 00161	PARIS-135 LED 2500 VI	2500	4000K	>80	26W	1572	210	45	1310	70	75	105	6,1	A
LS 00162	PARIS-214 LED 2000 VI	2000	4000K	>80	20W	650	346	45	580	210	100	150	4,2	A
LS 00163	PARIS-228 LED 4000 VI	4000	4000K	>80	41W	1272	346	45	1010	210	100	175	5,3	A
LS 00164	PARIS-235 LED 5000 VI	5000	4000K	>80	51W	1572	346	45	1310	210	100	175	6,2	A
LS 00165	PARIS-414 LED 4000 VI	4000	4000K	>80	41W	650	637	45	595	582	90	150	5,2	A



MED OPAL LED



FIELD OF APPLICATION

MED OPAL RANGE OF LED FITTINGS IS SUGGESTED FOR GENERAL ILLUMINATION OF CLEANROOMS, OPERATING ROOMS, PHARMACEUTICAL AND FOOD PROCESSING PLANTS, CHEMICAL AND ELECTRONIC DEVICES MANUFACTURING PLANTS. PROTECTION: IP 65

BASE MATERIAL

BODY OF LUMINAIRE: STEEL SHEET PAINTED WITH EPOXY POLYESTER BASED PAINT IN RAL 9003 COLOUR

DIFFUSER: 3MM THICK OPAL POLYMATHIC METHACRYLATE (PMMA), IN ANODIZED EXTRUDED ALUMINIUM FRAME

GASKET: SILICONE PROFILE PLACED INTO THE FRAME OF THE DIFFUSER

INSTALLATION

THE LUMINARIES CAN BE MOUNTED ONTO SURFACE OR INTO VISIBLE STRUCTURE SUSPENDED CEILING





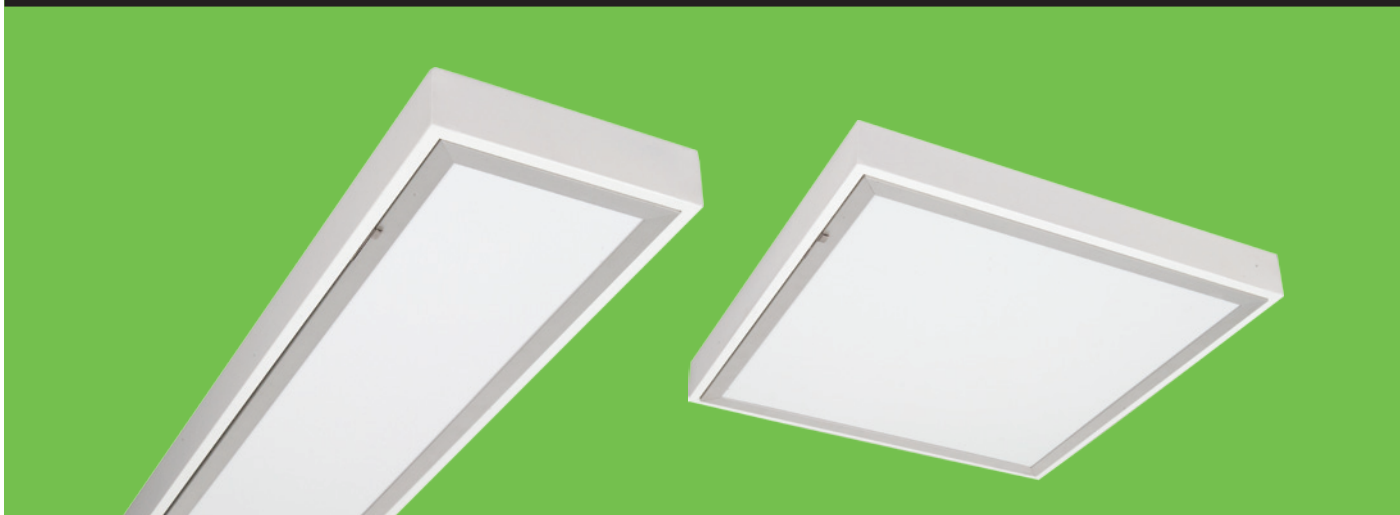
230V
50Hz



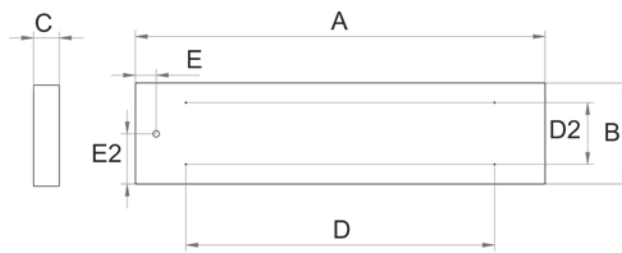
IP65



ta...25°C



Kod ref.	Typ oprawy	Str.lumeny (lm)	Barwa sw. (K)	CRI	Moc (W)	A (mm)	B (mm)	C (mm)	D (mm)	D2 (mm)	E (mm)	E2 (mm)	Waga (kg)	Klasa EN
LS 00166	MED-214 OP LED 2600 VZ	2600	3000K, 4000K	>80	18W	595	295	75	450	180	60	148	4,1	A+
LS 00167	MED-228 OP LED 5200 VZ	5200	3000K, 4000K	>80	36W	1195	295	75	900	180	60	148	6,3	A+
LS 00168	MED-235 OP LED 6500 VZ	6500	3000K, 4000K	>80	45W	1495	295	75	1200	180	60	148	8,7	A+
LS 00169	MED-414 OP LED 5200 VZ	5200	3000K, 4000K	>80	36W	595	595	75	450	480	60	298	6,2	A+
LS 00170	MED-214 OP LED 4400 SL	4400	3000K, 4000K	>80	25W	595	295	75	450	180	60	148	4,1	A+
LS 00171	MED-228 OP LED 8800 SL	8800	3000K, 4000K	>80	50W	1195	295	75	900	180	60	148	6,3	A+
LS 00172	MED-414 OP LED 8800 SL	8800	3000K, 4000K	>80	50W	595	595	75	450	480	60	298	6,2	A+
LS 00173	MED-214 OP LED 2000 VI	2000	4000K	>80	20W	595	295	75	450	180	60	148	4,1	A
LS 00174	MED-228 OP LED 4000 VI	4000	4000K	>80	41W	1195	295	75	900	180	60	148	6,3	A
LS 00175	MED-235 OP LED 5000 VI	5000	4000K	>80	51W	1495	295	75	1200	180	60	148	8,7	A
LS 00176	MED-414 OP LED 4000 VI	4000	4000K	>80	41W	595	595	75	450	480	60	298	6,2	A



MED DP LED



FIELD OF APPLICATION

THE IP65 PROTECTED MED DP RANGE OF LED FITTINGS IS SUGGESTED FOR GENERAL ILLUMINATION OF CLEANROOMS, OPERATING ROOMS, PHARMACEUTICAL AND FOOD PROCESSING PLANTS, CHEMICAL AND ELECTRONIC DEVICES MANUFACTURING PLANTS.

BASE MATERIAL

BODY OF LUMINAIRE: EPOXY POLYESTER BASED PAINTED STEEL SHEET IN RAL 9003 COLOUR.
DIFFUSER: 3MM THICK OPAL POLYMETHACRYLATE (PMMA), 4MM THICK TEMPERED GLASS WITH

DOUBLE-PARABOLIC, IN ANODIZED EXTRUDED ALUMINIUM FRAME

GASKET: SILICONE PROFILE PLACED INTO THE FRAME OF THE DIFFUSER

INSTALLING

THE LUMINAIRES CAN BE MOUNTED SUSPENDED ONTO THE CEILING OR INTO VISIBLE STRUCTURE ARTIFICIAL CEILING



230V
50Hz

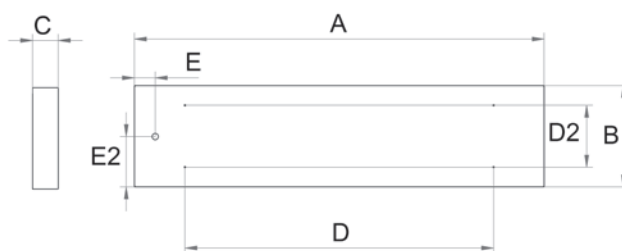
IP65



ta...25°C



Kod ref.	Typ oprawy	Str. lumeny (lm)	Barwa sw. (K)	CRI	Moc (W)	A (mm)	B (mm)	C (mm)	D (mm)	D2 (mm)	E (mm)	E2 (mm)	Waga (kg)	Klasa EN
LS 00177	MED-214 DP LED 2600 VZ	2600	3000K, 4000K	>80	18W	595	295	75	450	180	60	148	5.8	A+
LS 00178	MED-228 DP LED 5200 VZ	5200	3000K, 4000K	>80	36W	1195	295	75	900	180	60	148	8.2	A+
LS 00179	MED-235 DP LED 6500 VZ	6500	3000K, 4000K	>80	45W	1495	295	75	1200	180	60	148	12.6	A+
LS 00180	MED-414 OP LED 5200 VZ	5200	3000K, 4000K	>80	36W	595	595	75	450	480	60	298	9.6	A+
LS 00181	MED-214 DP LED 4400 SL	4400	3000K, 4000K	>80	25W	595	295	75	450	180	60	148	5.8	A+
LS 00182	MED-228 DP LED 8800 SL	8800	3000K, 4000K	>80	50W	1195	295	75	900	180	60	148	8.2	A+
LS 00183	MED-414 DP LED 8800 SL	8800	3000K, 4000K	>80	50W	595	595	75	450	480	60	298	9.6	A+
LS 00184	MED-214 DP LED 2000 VI	2000	4000K	>80	20W	595	295	75	450	180	60	148	5.8	A
LS 00185	MED-228 DP LED 4000 VI	4000	4000K	>80	41W	1195	295	75	900	180	60	148	8.2	A
LS 00186	MED-235 DP LED 5000 VI	5000	4000K	>80	51W	1495	295	75	1200	180	60	148	12.6	A
LS 00187	MED-414 DP LED 4000 VI	4000	4000K	>80	41W	595	595	75	450	480	60	298	9.6	A



MED PR LED



FIELD OF APPLICATION

MED PR RANGE OF LED FITTINGS IS SUGGESTED FOR GENERAL ILLUMINATION OF CLEANROOMS, OPERATING ROOMS, PHARMACEUTICAL AND FOOD PROCESSING PLANTS, CHEMICAL AND ELECTRONIC DEVICES MANUFACTURING PLANTS. PROTECTION: IP 65

BASE MATERIAL

BODY OF LUMINAIRE: STEEL SHEET PAINTED WITH EPOXY POLYESTER BASED PAINT IN RAL 9003 COLOUR.

4MM THICK TEMPERED GLASS WITH MICRO PRISMATIC

COVER SHEET PLACED IN ANODIZED EXTRUDED ALUMINIUM FRAME.

GASKET: SILICONE PROFILE PLACED INTO THE FRAME OF THE DIFFUSER

INSTALLATION

THE LUMINARIES CAN BE MOUNTED ONTO SURFACE OR INTO VISIBLE STRUCTURE SUSPENDED CEILING



230V
50Hz

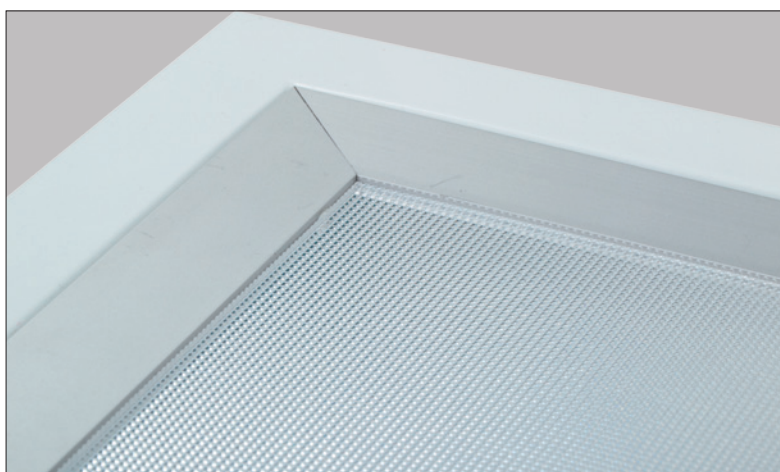
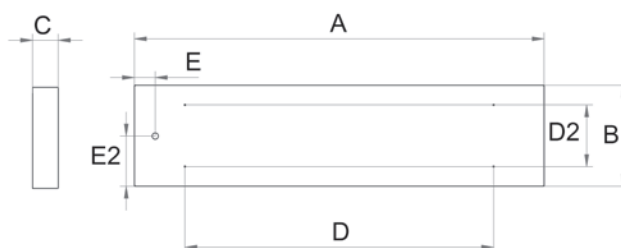
IP65



ta...25°C



Kod ref.	Typ oprawy	Str.lumeny (lm)	Barwa sw. (K)	CRI	Moc (W)	A (mm)	B (mm)	C (mm)	D (mm)	D2 (mm)	E (mm)	E2 (mm)	Waga (kg)	Klasa EN
LS 00188	MED-214 PR LED 2600 VZ	2600	3000K, 4000K	>80	18W	595	295	75	450	180	60	148	4,1	A+
LS 00189	MED-228 PR LED 5200 VZ	5200	3000K, 4000K	>80	36W	1195	295	75	900	180	60	148	6,3	A+
LS 00190	MED-235 PR LED 6500 VZ	6500	3000K, 4000K	>80	45W	1495	295	75	1200	180	60	148	8,7	A+
LS 00191	MED-414 PR LED 5200 VZ	5200	3000K, 4000K	>80	36W	595	595	75	450	480	60	298	6,2	A+
LS 00192	MED-214 PR LED 4400 SL	4400	3000K, 4000K	>80	25W	595	295	75	450	180	60	148	4,1	A+
LS 00193	MED-228 PR LED 8800 SL	8800	3000K, 4000K	>80	50W	1195	295	75	900	180	60	148	6,3	A+
LS 00194	MED-414 PR LED 8800 SL	8800	3000K, 4000K	>80	50W	595	595	75	450	480	60	298	6,2	A+
LS 00195	MED-214 PR LED 2000 VI	2000	4000K	>80	20W	595	295	75	450	180	60	148	4,1	A
LS 00196	MED-228 PR LED 4000 VI	4000	4000K	>80	40W	1195	295	75	900	180	60	148	6,3	A
LS 00197	MED-235 PR LED 5000 VI	5000	4000K	>80	51W	1495	295	75	1200	180	60	148	8,7	A
LS 00198	MED-414 PR LED 4000 VI	4000	4000K	>80	40W	595	595	75	450	480	60	298	6,2	A



PANEL LED



FIELD OF APPLICATION

THE RANGE OF PANEL LED SYSTEM IS APPLICABLE FOR GENERAL ILLUMINATION OF PUBLIC INSTITUTIONS, OFFICES, COMMERCIAL SPACES AND PERMISES. DUE TO ITS STRUCTURE IT HAS HOMOGEN ILLUMINATION ON THE WHOLE SURFACE OF THE LUMINAIRE, WITH ITS APPLICATION THE EVENNESS OF THE ILLUMINATION CAN BE IMPROVED. ITS FURTHER ADVANTAGE IS ITS SMALL HEIGHTS, WHICH IS APPLICABLE IN SUCH SPACES, WHERE THERE IS NOT ENOUGH SPACE BETWEEN THE ROOF AND THE ARTIFICIAL CEILING FOR THE INSTALLATION OF LUMINAIRES WITH STANDARD HEIGHT

BASE MATERIAL

BODY OF LUMINAIRE: EXTRUDED ALUMINIUM PROFILE

DIFFUSER: POLYMETHYL METHACRYLATE

FIXING

THE LUMINAIRES CAN BE MOUNTED INTO EXPOSED GRID ARTIFICIAL CEILING, AND CAN BE MOUNTED ON CEILING WITH THE MOUNTING FRAME.





230V
50Hz



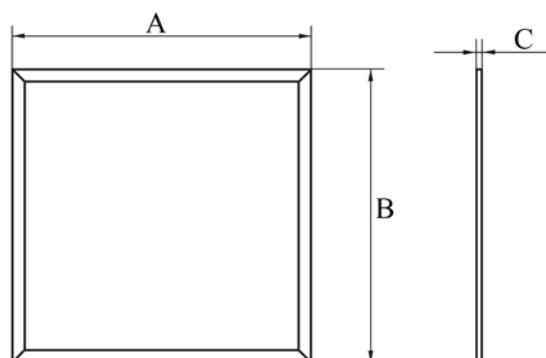
IP20



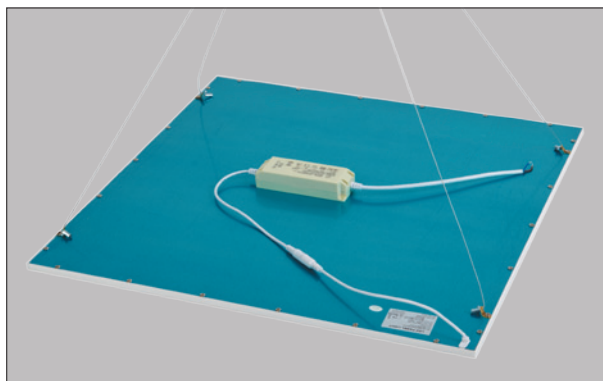
ta...25°C



Kod ref.	Typ oprawy	Str. lumeny (lm)	Barwa sw. (K)	CRI	Moc (W)	A (mm)	B (mm)	C (mm)	Waga (kg)	Klasa EN
LS 00199	PANEL-40 LED 3600	3600	4000K	>80	40W	595	595	10,5	2,9	A
LS 00200	PANEL-40 LED 3600	3600	4000K	>80	40W	1195	295	10,5	3,1	A



PANEL LED

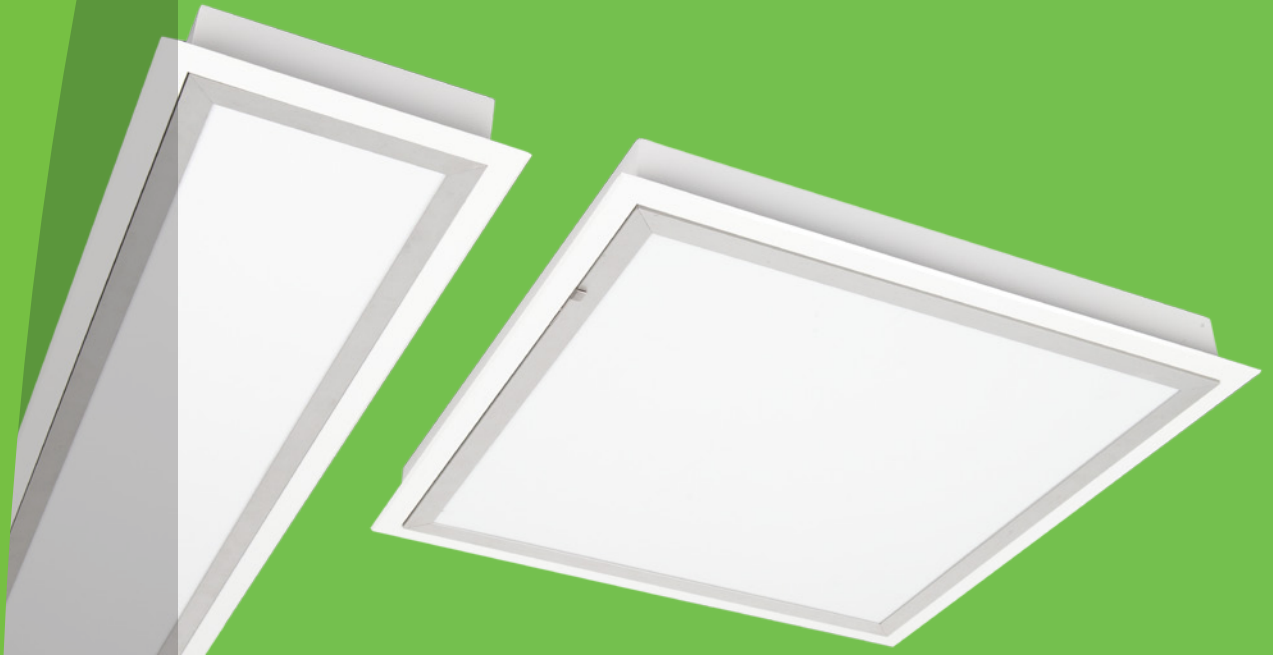


PANEL LED

602X602X54



LABOR OPAL LED



FIELD OF APPLICATION

THE IP65 PROTECTED LABOR OPAL LED RANGE FITTINGS IS SUGGESTED FOR GENERAL ILLUMINATION OF DEMANDING SPACES, LIKE CLEANROOMS, OPERATING ROOMS, INTENSIVE CARE UNITS, PHARMACEUTICAL AND FOOD PROCESSING PLANTS, CHEMICAL AND ELECTRONIC DEVICES MANUFACTURING PLANTS.

BASE MATERIAL

BODY OF LUMINAIRE: STEEL SHEET PAINTED WITH EPOXY POLYESTER BASED PAINT IN RAL 9003 COLOUR.

DIFFUSER: 3MM THICK OPAL POLYMATHIC METHACRYLATE (PMMA) IN ANODISED EXTRUDED ALUMINIUM FRAME.

GASKET: SILICONE PROFILE PLACED INTO THE FRAME OF THE DIFFUSER

INSTALLATION

THE LUMINARIES CAN BE SUSPENDED INTO PLASTERBOARD ARTIFICIAL CEILINGS.

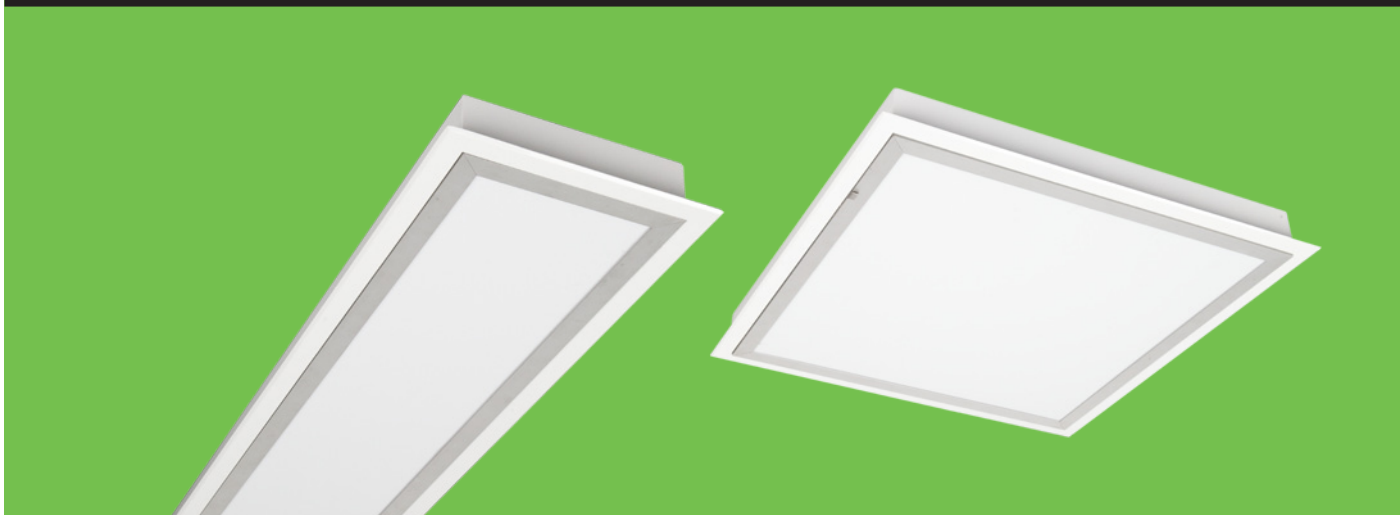


230V
50Hz

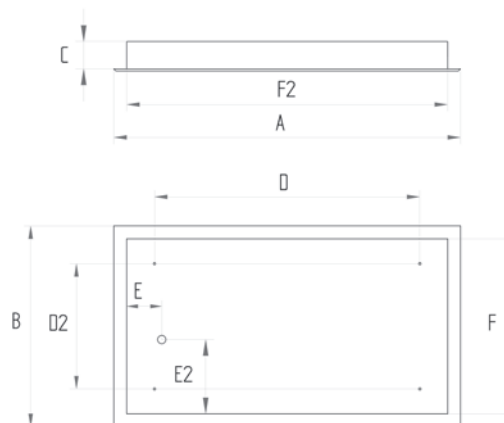
IP65



ta...25°C



Kod ref.	Typ oprawy	Str.lumeny (lm)	Barwa sw. (K)	CRI	Moc (W)	A (mm)	B (mm)	C (mm)	D (mm)	D2 (mm)	E (mm)	E2 (mm)	F (mm)	F2 (mm)	Waga (kg)	Klasa EN
LS 00201	LABOR-214 OP LED 2600 VZ	2600	3000K, 4000K	>80	18W	688	371	72	450	240	40	115	317	634	4.4	A+
LS 00202	LABOR-228 OP LED 5200 VZ	5200	3000K, 4000K	>80	36W	1301	371	72	900	240	40	115	317	1247	6.9	A+
LS 00203	LABOR-235 OP LED 6500 VZ	6500	3000K, 4000K	>80	45W	1566	371	72	1200	240	40	115	317	1512	9.6	A+
LS 00204	LABOR-414 OP LED 5200 VZ	5200	3000K, 4000K	>80	36W	688	688	72	550	550	40	317	634	634	6.3	A+
LS 00205	LABOR-214 OP LED 4400 SL	4400	3000K, 4000K	>80	25W	688	371	72	450	240	40	115	317	634	4.4	A+
LS 00206	LABOR-228 OP LED 8800 SL	8800	3000K, 4000K	>80	50W	1301	371	72	900	240	40	115	317	1247	6.9	A+
LS 00207	LABOR-414 OP LED 8800 SL	8800	3000K, 4000K	>80	50W	688	688	72	550	550	40	317	634	634	6.3	A+
LS 00208	LABOR-214 OP LED 2000 VI	2000	4000K	>80	20W	688	371	72	450	240	40	115	317	634	4.4	A
LS 00209	LABOR-228 OP LED 4000 VI	4000	4000K	>80	41W	1301	371	72	900	240	40	115	317	1247	6.9	A
LS 00210	LABOR-235 OP LED 5000 VI	5000	4000K	>80	51W	1566	371	72	1200	240	40	115	317	1512	9.6	A
LS 00211	LABOR-414 OP LED 4000 VI	4000	4000K	>80	41W	688	688	72	550	550	40	317	634	634	6.3	A



LABOR DP LED



FIELD OF APPLICATION

THE IP65 PROTECTED LABOR DP LED RANGE FITTINGS IS SUGGESTED FOR GENERAL ILLUMINATION OF DEMANDING SPACES, LIKE CLEANROOMS, OPERATING ROOMS, INTENSIVE CARE UNITS, PHARMACEUTICAL AND FOOD PROCESSING PLANTS, CHEMICAL AND ELECTRONIC DEVICES MANUFACTURING PLANTS.

BASE MATERIAL

BODY OF LUMINAIRE: STEEL SHEET PAINTED WITH EPOXY POLYESTER BASED PAINT IN RAL 9003 COLOUR.

DIFFUSER: 4MM THICK TEMPERED GLASS WITH DOUBLE-PARABOLIC, IN ANODIZED EXTRUDED ALUMINIUM FRAME.

GASKET: SILICONE PROFILE PLACED INTO THE FRAME OF THE DIFFUSER

INSTALLATION

THE LUMINARIES CAN BE SUSPENDED INTO PLASTERBOARD ARTIFICIAL CEILINGS.



230V
50Hz

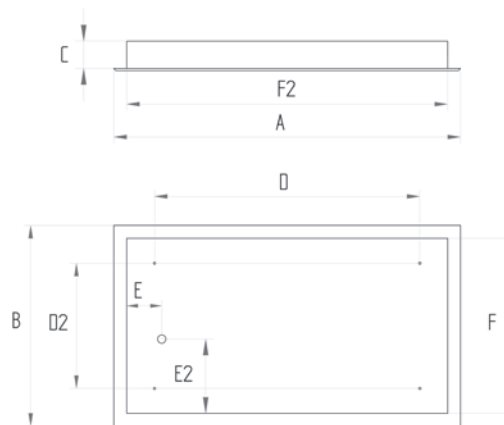
IP65



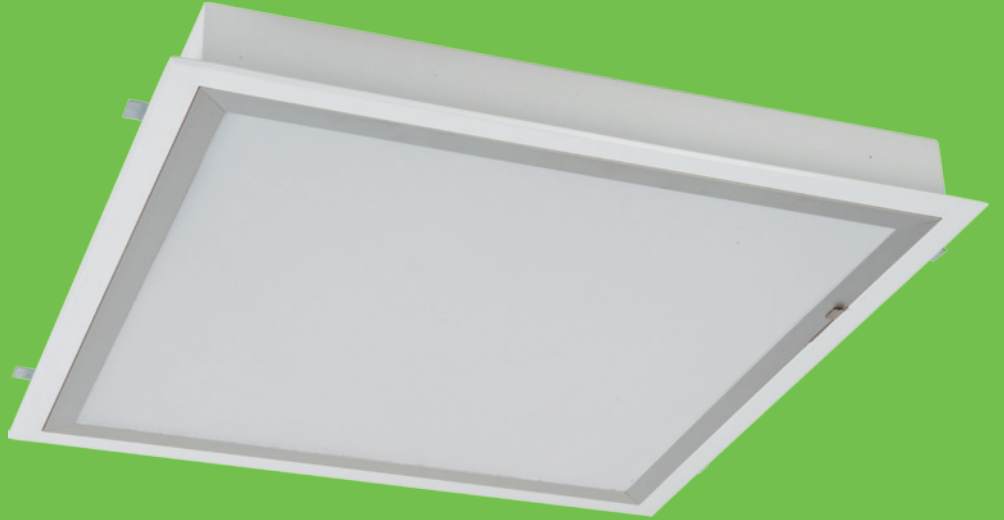
ta...25°C



Kod ref.	Typ oprawy	Str. lumeny (lm)	Barwa sw. (K)	CRI	Moc (W)	A (mm)	B (mm)	C (mm)	D (mm)	D2 (mm)	E (mm)	E2 (mm)	F (mm)	F2 (mm)	Waga (kg)	Klasa EN
LS 00212	LABOR-214 DP LED 2600 VZ	2600	3000K, 4000K	>80	18W	688	371	72	450	240	40	115	317	634	6,1	A+
LS 00213	LABOR-228 DP LED 5200 VZ	5200	3000K, 4000K	>80	36W	1301	371	72	900	240	40	115	317	1247	8,9	A+
LS 00214	LABOR-235 DP LED 6500 VZ	6500	3000K, 4000K	>80	45W	1566	371	72	1200	240	40	115	317	1512	13,5	A+
LS 00215	LABOR-414 DP LED 5200 VZ	5200	3000K, 4000K	>80	36W	688	688	72	550	550	40	317	634	634	10,5	A+
LS 00216	LABOR-214 DP LED 4400 SL	4400	3000K, 4000K	>80	25W	688	371	72	450	240	40	115	317	634	6,1	A+
LS 00217	LABOR-228 DP LED 8800 SL	8800	3000K, 4000K	>80	50W	1301	371	72	900	240	40	115	317	1247	8,9	A+
LS 00218	LABOR-414 DP LED 8800 SL	8800	3000K, 4000K	>80	50W	688	688	72	550	550	40	317	634	634	10,5	A+
LS 00219	LABOR-214 DP LED 2000 VI	2000	4000K	>80	20W	688	371	72	450	240	40	115	317	634	6,1	A
LS 00220	LABOR-228 DP LED 4000 VI	4000	4000K	>80	41W	1301	371	72	900	240	40	115	317	1247	8,9	A
LS 00221	LABOR-235 DP LED 5000 VI	5000	4000K	>80	51W	1566	371	72	1200	240	40	115	317	1512	13,5	A
LS 00222	LABOR-414 DP LED 4000 VI	4000	4000K	>80	41W	688	688	72	550	550	40	317	634	634	10,5	A



LABOR PR LED



FIELD OF APPLICATION

THE IP65 PROTECTED LABOR PR LED RANGE FITTINGS IS SUGGESTED FOR GENERAL ILLUMINATION OF DEMANDING SPACES, LIKE CLEANROOMS, OPERATING ROOMS, INTENSIVE CARE UNITS, PHARMACEUTICAL AND FOOD PROCESSING PLANTS, CHEMICAL AND ELECTRONIC DEVICES MANUFACTURING PLANTS.

BASE MATERIAL

BODY OF LUMINAIRE: STEEL SHEET PAINTED WITH EPOXY POLYESTER BASED PAINT IN RAL 9003 COLOUR

DIFFUSER: 4MM THICK TEMPERED GLASS WITH MICRO PRISMATIC SHEET IN ANODISED EXTRUDED ALUMINIUM FRAME.

GASKET: SILICONE PROFILE PLACED INTO THE FRAME OF THE DIFFUSER

INSTALLATION

THE LUMINARIES CAN BE SUSPENDED INTO PLASTERBOARD ARTIFICIAL CEILINGS.



230V
50Hz

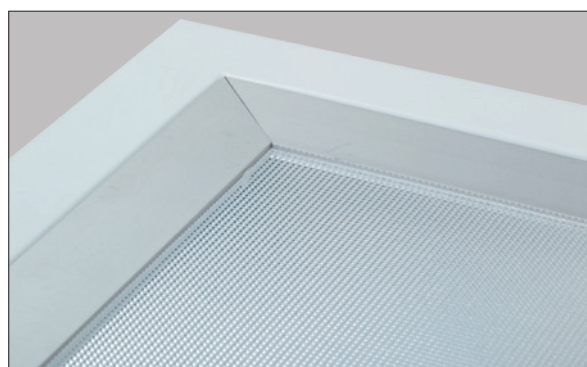
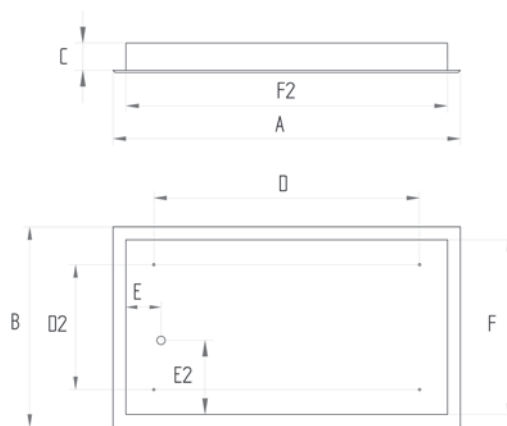
IP65



ta...25°C



Kod ref.	Typ oprawy	Str.lumeny (lm)	Barwa sw. (K)	CRI	Moc (W)	A (mm)	B (mm)	C (mm)	D (mm)	D2 (mm)	E (mm)	E2 (mm)	F (mm)	F2 (mm)	Waga (kg)	Klasa EN
LS 00223	LABOR-214 PR LED 2600 VZ	2600	3000K, 4000K	>80	18W	688	371	72	450	240	40	115	317	634	4,4	A+
LS 00224	LABOR-228 PR LED 5200 VZ	5200	3000K, 4000K	>80	36W	1301	371	72	900	240	40	115	317	1247	6,9	A+
LS 00225	LABOR-235 PR LED 6500 VZ	6500	3000K, 4000K	>80	45W	1566	371	72	1200	240	40	115	317	1512	9,6	A+
LS 00226	LABOR-414 PR LED 5200 VZ	5200	3000K, 4000K	>80	36W	688	688	72	550	550	40	317	634	634	6,3	A+
LS 00227	LABOR-214 PR LED 4400 SL	4400	3000K, 4000K	>80	25W	688	371	72	450	240	40	115	317	634	4,4	A+
LS 00228	LABOR-228 PR LED 8800 SL	8800	3000K, 4000K	>80	50W	1301	371	72	900	240	40	115	317	1247	6,9	A+
LS 00229	LABOR-414 PR LED 8800 SL	8800	3000K, 4000K	>80	50W	688	688	72	550	550	40	317	634	634	6,3	A+
LS 00230	LABOR-214 PR LED 2000 VI	2000	4000K	>80	20W	688	371	72	450	240	40	115	317	634	4,4	A
LS 00231	LABOR-228 PR LED 4000 VI	4000	4000K	>80	41W	1301	371	72	900	240	40	115	317	1247	6,9	A
LS 00232	LABOR-235 PR LED 5000 VI	5000	4000K	>80	51W	1566	371	72	1200	240	40	115	317	1512	9,6	A
LS 00233	LABOR-414 PR LED 4000 VI	4000	4000K	>80	41W	688	688	72	550	550	40	317	634	634	6,3	A



STALG IP40 LED



FIELD OF APPLICATION

THE STALG LED RANGE OF LUMINAIRES IS APPLICABLE FOR GENERAL ILLUMINATION OF HEALTH INSTITUTIONS, HOSPITALS, MEDICAL CLINICS, KITCHENS AND SUCH SPACES, WHERE FREQUENT CLEANING OF SURFACES IS REQUIRED AND IMPORTANT ASPECT IS ENERGY SAVING OPERATION AND LONGEVITY OF LIGHT SOURCE.

BASE MATERIAL

BODY OF LUMINAIRE: WHITE PAINTED STEEL SHEET.

DIFFUSER: OPAL POLYMETHIL METHACRYLATE (PMMA)

INSTALLING

THE LUMINAIRES CAN BE MOUNTED INTO PLASTERBOARD ARTIFICIAL CEILINGS.





230V
50Hz



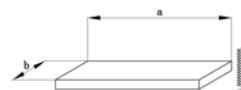
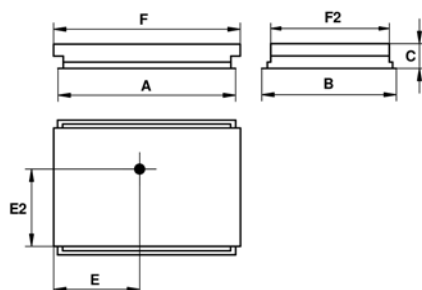
IP40



ta...25°C



Kod ref.	Typ oprawy	Str. lumeny (lm)	Barwa sw. (K)	CRI	Moc (W)	A (mm)	B (mm)	C (mm)	E (mm)	E2 (mm)	F (mm)	F2 (mm)	a (mm)	b (mm)	Waga (kg)	Klasa EN
LS 00234	STALG-236 IP40 LED 5200 VZ	5200	3000K, 4000K	>80	36W	1222	322	55	25	15	1178	280	1190	290	4,9	A+
LS 00235	STALG-418 IP40 LED 5200 VZ	5200	3000K, 4000K	>80	36W	622	622	55	25	15	580	580	590	590	5,1	A+
LS 00236	STALG-236 IP40 LED 8800 SL	8800	3000K, 4000K	>80	50W	1222	322	55	25	15	1178	280	1190	290	4,9	A+
LS 00237	STALG-418 IP40 LED 8800 SL	8800	3000K, 4000K	>80	50W	622	622	55	25	15	580	580	590	590	5,1	A+
LS 00238	STALG-236 IP40 LED 4000 VI	4000	4000K	>80	41W	1222	322	55	25	15	1178	280	1190	290	4,9	A
LS 00239	STALG-418 IP40 LED 4000 VI	4000	4000K	>80	41W	622	622	55	25	15	580	580	590	590	5,1	A



STS LED



FIELD OF APPLICATION

THE STS LED RANGE OF BATTEN LUMINAIRES IS SUGGESTED IN CASE OF HIGH CEILING AND FOR EXECUTION OF HIDDEN AND BARRISOL LIGHTING SOLUTIONS.

BASE MATERIAL

HOUSING OF LUMINAIRE: STEEL SHEET PAINTED WITH EPOXY POLYESTER BASED POWDER PAINT IN COLOUR RAL 9003

INSTALLATION

THE LUMINAIRES CAN BE MOUNTED ONTO CEILING OR SUSPENDED.





230V
50Hz



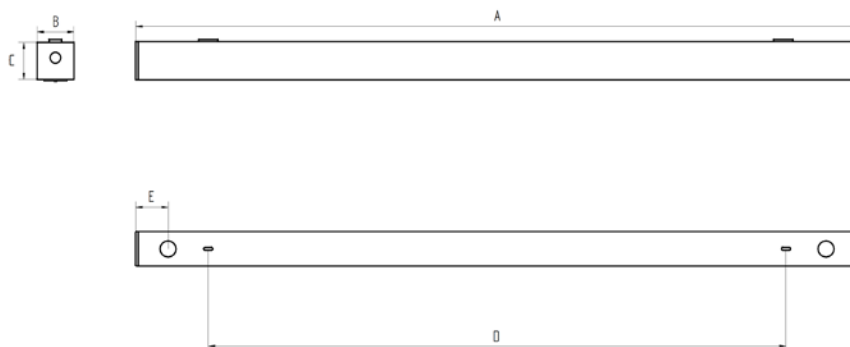
IP20



ta...25°C



Kod ref.	Typ oprawy	Str. lumeny (lm)	Barwa sw. (K)	CRI	Moc (W)	A (mm)	B (mm)	C (mm)	D (mm)	E (mm)	Waga (kg)	Klasa EN
LS 00240	STS-128 LED 2600 VZ	2600	3000K, 4000K	>80	18W	1185	46	47	930	80	1,3	A+
LS 00241	STS-135 LED 3250 VZ	3250	3000K, 4000K	>80	23W	1485	46	47	1230	80	1,6	A+
LS 00242	STS-114 LED 2200 SL	2200	3000K, 4000K	>80	13W	585	46	47	472	80	0,8	A+
LS 00243	STS-128 LED 4400 SL	4400	3000K, 4000K	>80	25W	1185	46	47	930	80	1,3	A+
LS 00244	STS-135 LED 5500 SL	5500	3000K, 4000K	>80	31W	1485	46	47	1230	80	1,6	A+
LS 00245	STS-114 LED 1000 VI	1000	4000K	>80	10W	585	46	47	472	80	0,8	A
LS 00246	STS-128 LED 2000 VI	2000	4000K	>80	20W	1185	46	47	930	80	1,3	A
LS 00247	STS-135 LED 2500 VI	2500	4000K	>80	26W	1485	46	47	1230	80	1,6	A



STSM LED



FIELD OF APPLICATION

THE STSM LED RANGE OF LUMINAIRES IS SUGGESTED IN CASE OF HIGH CEILING FOR GENERAL ILLUMINATION OF DEPARTMENT STORES, SALES AREAS, CORRIDORS.

BASE MATERIAL

BODY OF THE LUMINAIRE AND REFLECTOR: EPOXY POLYESTER BASED PAINTED STEEL SHEET IN RAL 9003 COLOUR.

INSTALLING

LUMINAIRES CAN BE MOUNTED ONTO THE CEILING OR SUSPENDED.





230V
50Hz



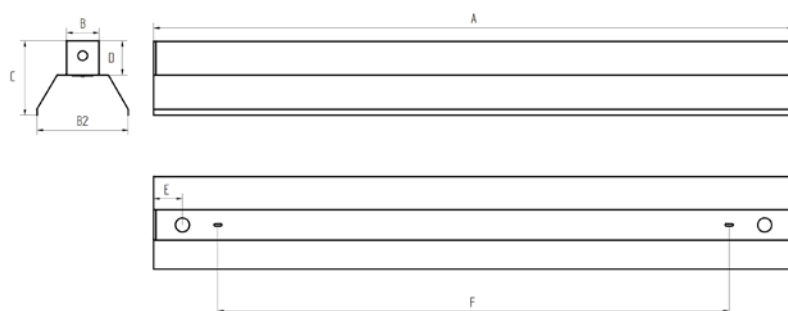
IP20



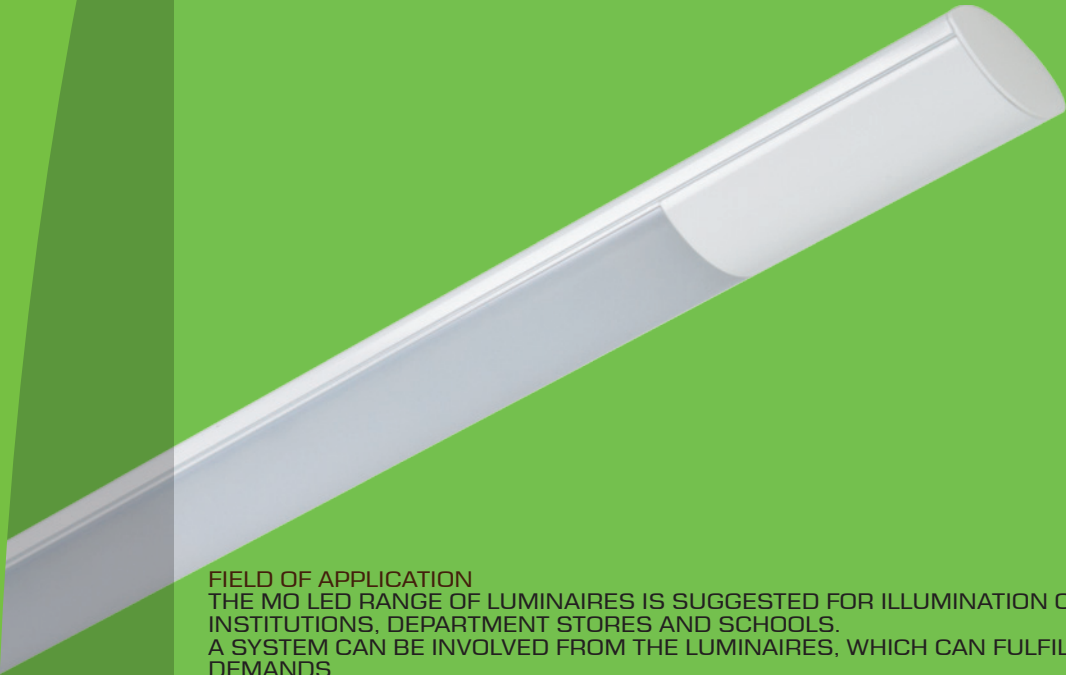
ta...25°C



Kod ref.	Typ oprawy	Str.lumeny (lm)	Barwa sw. (K)	CRI	Moc (W)	A (mm)	B (mm)	B2 (mm)	C (mm)	D (mm)	E (mm)	F (mm)	Waga (kg)	Klasa EN
LS 00248	STSM-128 LED 2600 VZ	2600	3000K, 4000K	>80	18W	1185	38	115	86	42	80	930	1.6	A+
LS 00250	STSM-135 LED 3250 VZ	3250	3000K, 4000K	>80	23W	1485	38	115	86	42	80	1230	2.0	A+
LS 00251	STSM-114 LED 2200 SL	2200	3000K, 4000K	>80	13W	585	38	115	86	42	80	472	1.0	A+
LS 00252	STSM-128 LED 4400 SL	4400	3000K, 4000K	>80	25W	1185	38	115	86	42	80	930	1.6	A+
LS 00253	STSM-135 LED 5500 SL	5500	3000K, 4000K	>80	31W	1485	38	115	86	42	80	1230	2.0	A+
LS 00254	STSM-114 LED 1000 VI	1000	4000K	>80	10W	585	38	115	86	42	80	472	1.0	A
LS 00255	STSM-128 LED 2000 VI	2000	4000K	>80	20W	1185	38	115	86	42	80	930	1.6	A
LS 00256	STSM-135 LED 2500 VI	2500	4000K	>80	26W	1485	38	115	86	42	80	1230	2.0	A



MO LED



FIELD OF APPLICATION

THE MO LED RANGE OF LUMINAIRES IS SUGGESTED FOR ILLUMINATION OF OFFICES, PUBLIC INSTITUTIONS, DEPARTMENT STORES AND SCHOOLS. A SYSTEM CAN BE INVOLVED FROM THE LUMINAIRES, WHICH CAN FULFIL THE WIDE RANGE OF DEMANDS.

BASE MATERIAL

HOUSING OF LUMINAIRE: EXTRUDED OVAL ALUMINIUM PROFILE, POWDER PAINTED FOR THE REQUIRED COLOUR.

LAMP END: ABS

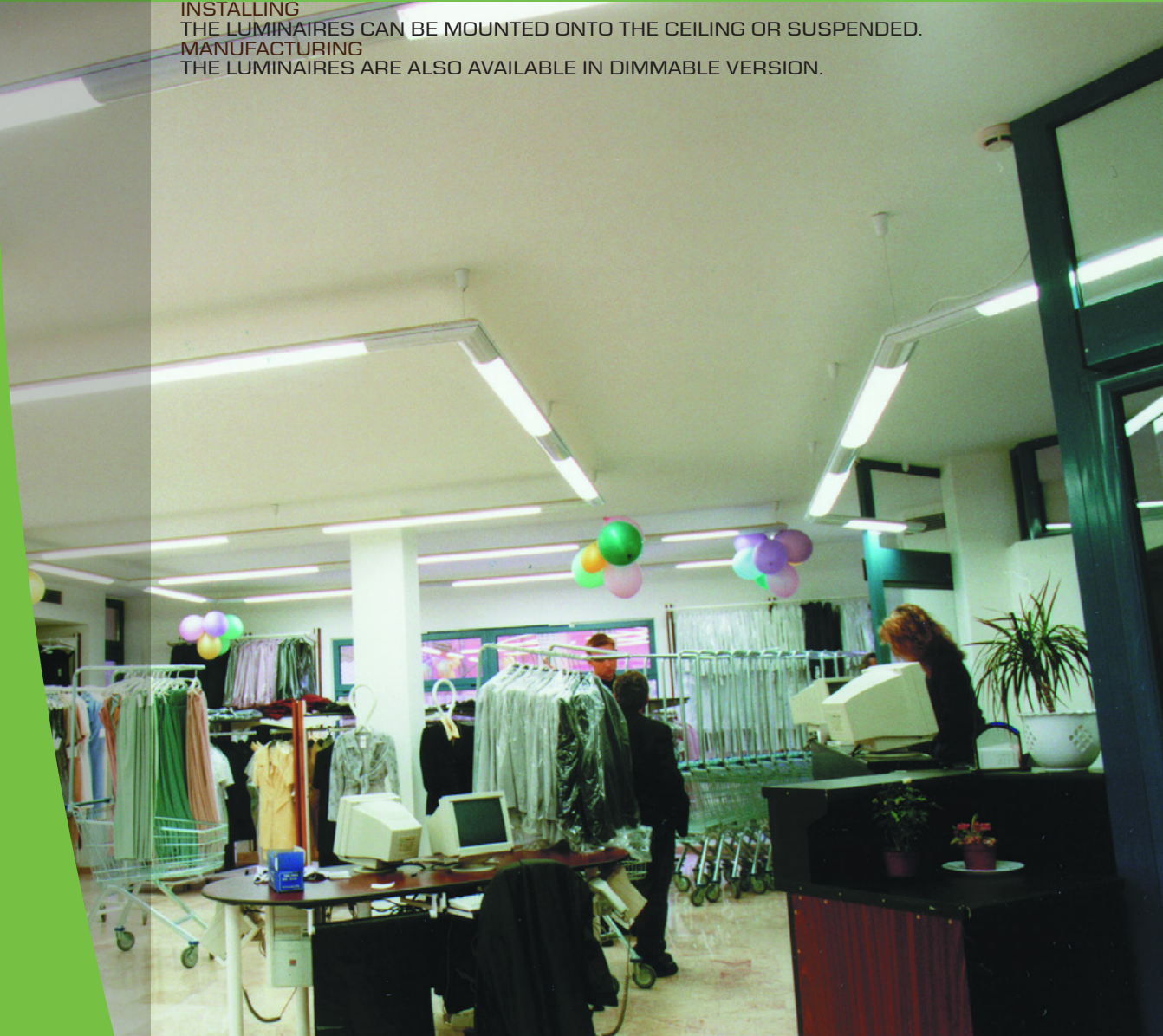
DIFFUSER: EXTRUDED OPAL POLYCARBONATE (PC)

INSTALLING

THE LUMINAIRES CAN BE MOUNTED ONTO THE CEILING OR SUSPENDED.

MANUFACTURING

THE LUMINAIRES ARE ALSO AVAILABLE IN DIMMABLE VERSION.



230V
50Hz

IP20



ta...25°C

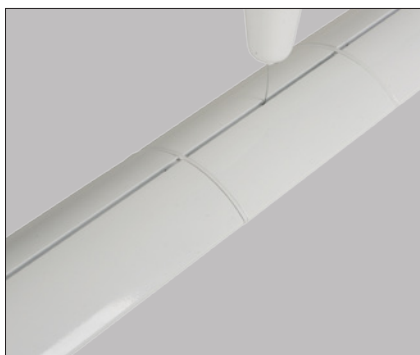


Kod ref.	Typ oprawy	Str. lumeny (lm)	Barwa sw. (K)	CRI	Moc (W)	A (mm)	B (mm)	C (mm)	Waga (kg)	Klasa EN
LS 00257	M0-128 LED 2600 VZ	2600	3000K, 4000K	>80	18W	1600	130	65	3,1	A+
LS 00258	M0-135 LED 3250 VZ	3250	3000K, 4000K	>80	23W	2000	130	65	4,3	A+
LS 00259	M0-214 LED 2600 VZ	2600	3000K, 4000K	>80	18W	1000	130	65	2,9	A+
LS 00260	M0-228 LED 5200 VZ	5200	3000K, 4000K	>80	36W	1600	130	65	3,4	A+
LS 00261	M0-235 LED 6500 VZ	6500	3000K, 4000K	>80	45W	2000	130	65	4,6	A+
LS 00262	M0-114 LED 2200 SL	2200	3000K, 4000K	>80	13W	1000	130	65	2,2	A+
LS 00263	M0-128 LED 4400 SL	4400	3000K, 4000K	>80	25W	1600	130	65	3,1	A+
LS 00264	M0-135 LED 5500 SL	5500	3000K, 4000K	>80	31W	2000	130	65	4,3	A+
LS 00265	M0-214 LED 4400 SL	4400	3000K, 4000K	>80	25W	1000	130	65	2,9	A+
LS 00266	M0-228 LED 8800 SL	8800	3000K, 4000K	>80	50W	1600	130	65	3,4	A+
LS 00267	M0-114 LED 1000 VI	1000	4000K	>80	10W	1000	130	65	2,2	A
LS 00268	M0-128 LED 2000 VI	2000	4000K	>80	20W	1600	130	65	3,1	A
LS 00269	M0-135 LED 2500 VI	2500	4000K	>80	26W	2000	130	65	4,3	A
LS 00270	M0-214 LED 2000 VI	2000	4000K	>80	20W	1000	130	65	2,9	A
LS 00271	M0-228 LED 4000 VI	4000	4000K	>80	41W	1600	130	65	3,4	A
LS 00272	M0-235 LED 5000 VI	5000	4000K	>80	51W	2000	130	65	4,6	A

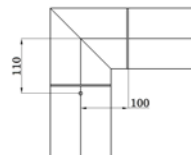




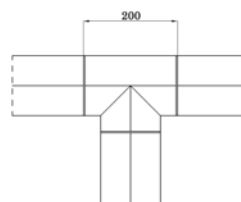
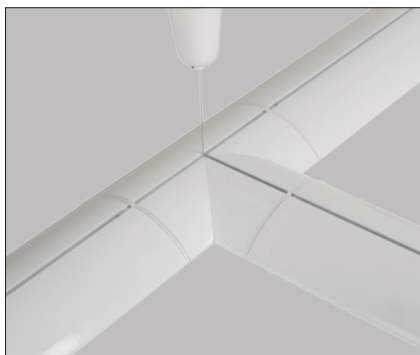
Kod ref. TYP
LS 00273 MO LED LACZNIK PROSTY



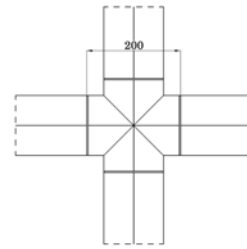
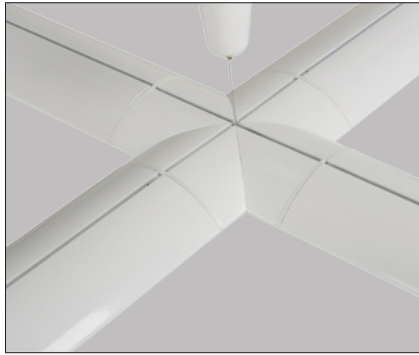
Kod ref. TYP
LS 00274 MO LED 200mm PROSTE PRZEDLUZENIE



Kod ref. TYP
LS 00275 MO LED L



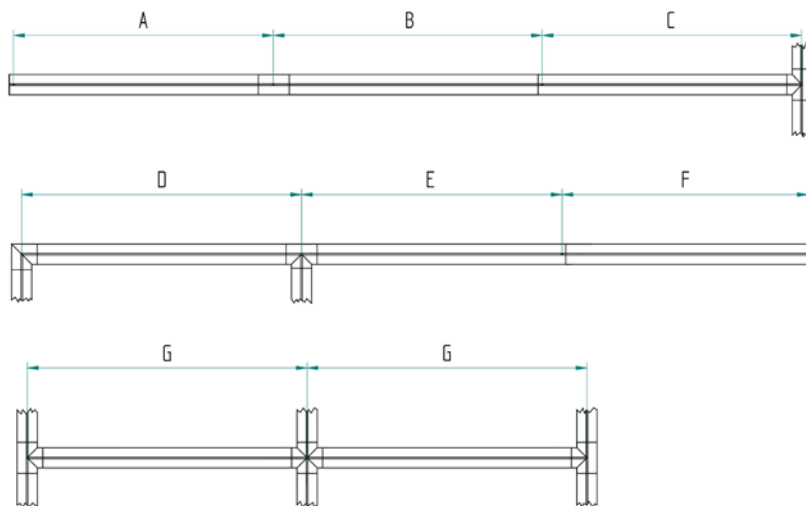
Kod ref. TYP
LS 00276 MO LED T



Kod ref. TYP
LS 00277 MO LED X idom

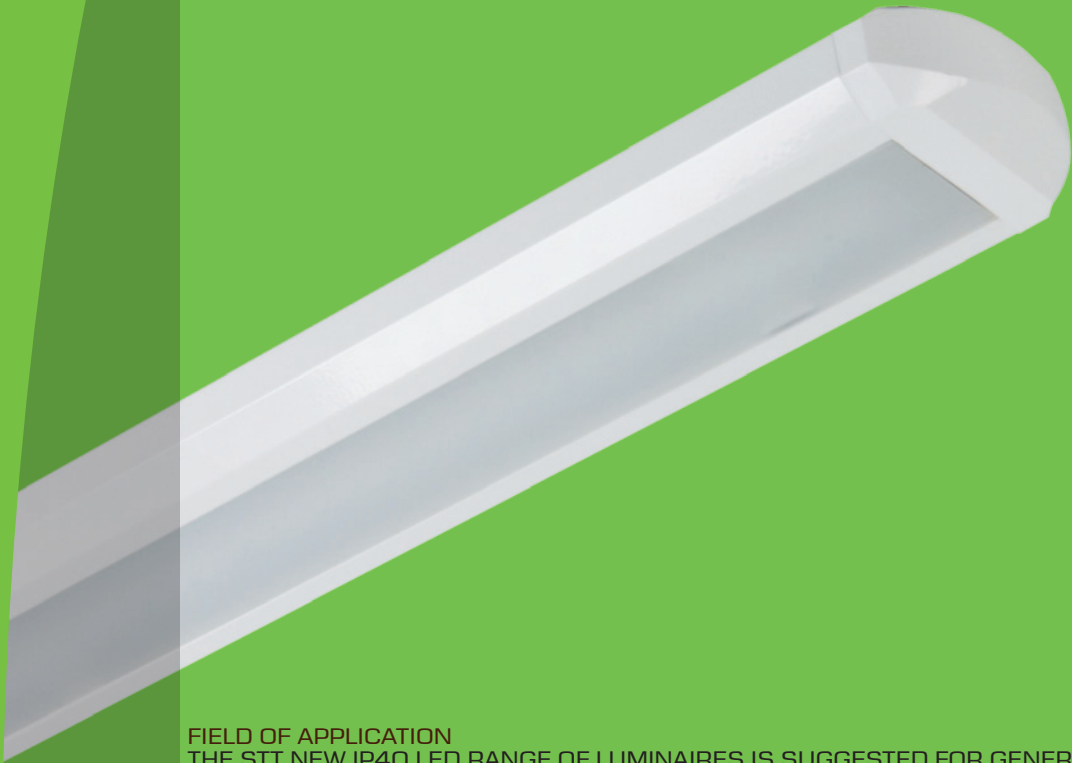


Kod ref. TYP
LS 00278 MO LED ZASLEPKA



TYP	A (mm)	B (mm)	C (mm)	D (mm)	E (mm)	F (mm)	G (mm)
MO-18 LED	1085	1115	1085	1200	1085	1000	1200
MO-30 LED	1385	1411	1385	1500	1385	1300	1500
MO-36 LED	1685	1715	1685	1800	1685	1600	1800
MO-58 LED	2085	2115	2085	2200	2085	2000	2200

STT NEW IP40 LED



FIELD OF APPLICATION

THE STT NEW IP40 LED RANGE OF LUMINAIRES IS SUGGESTED FOR GENERAL ILLUMINATION OF COMMERCIAL UNITS; DEPARTMENT STORES, SHOPS, OFFICES, WHERE ENERGY EFFICIENT OPERATION AND LONGEVITY OF LIGHT SOURCE IS IMPORTANT.

BASE MATERIAL

BASE MATERIAL: EPOXY POLYESTER BASED PAINTED STEEL SHEET IN WHITE OR GREY COLOUR. LAMP ENDS IN THE SAME COLOUR AS THE BODY OF THE LUMINAIRE.

DIFFUSER: LONGITUDINALLY PRISMATIC POLYMETHYL METHACRYLATE (PMMA).

FIXING

THE LUMINAIRES CAN BE MOUNTED ONTO THE CEILING OR SUSPENDED.

MANUFACTURING

THE LUMINAIRES ARE AVAILABLE IN EVG, DIMM EVG, INVERTER VERSION.





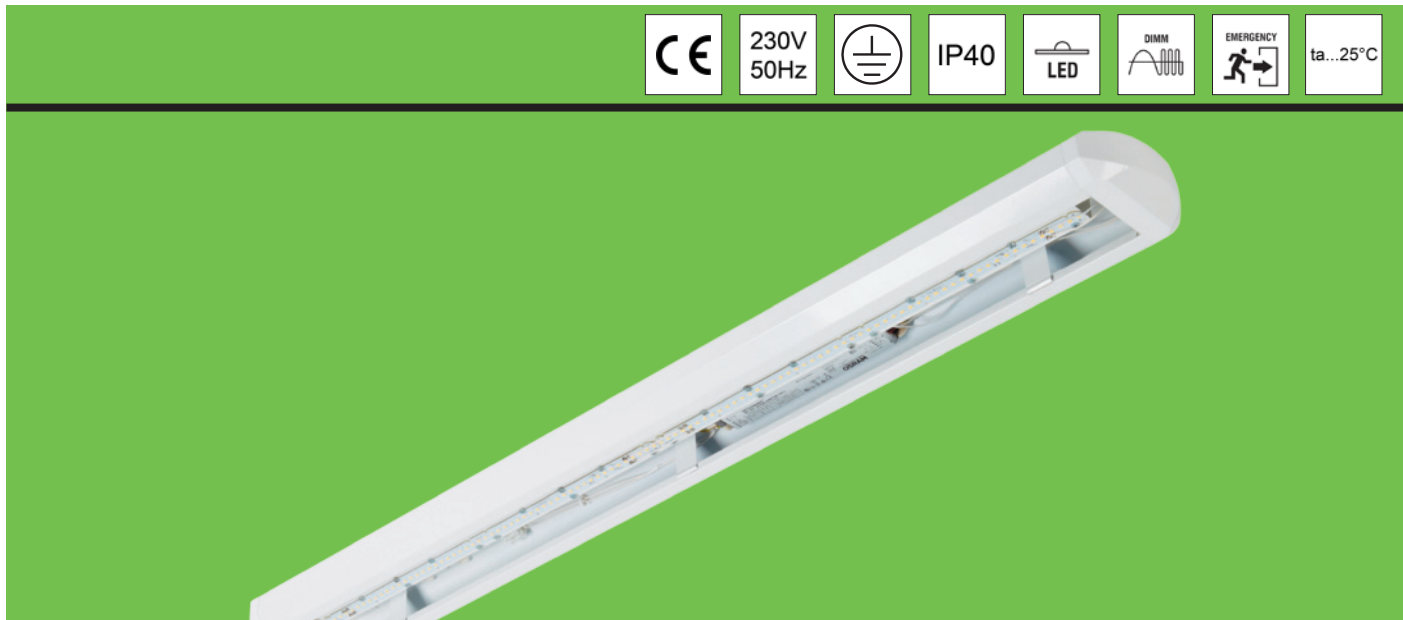
230V
50Hz



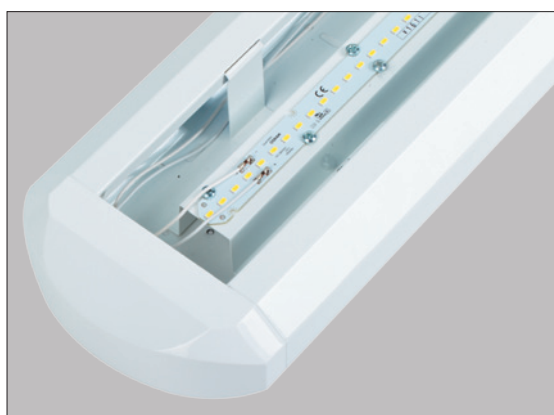
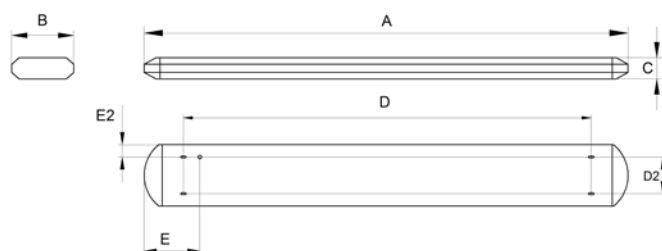
IP40



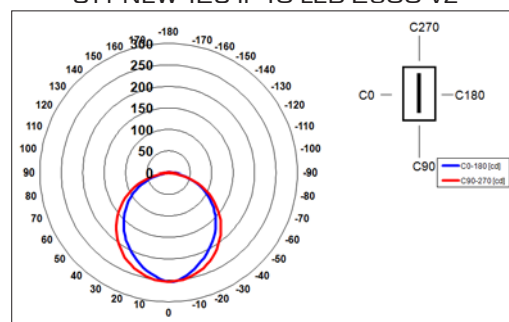
ta...25°C



Kod ref.	Typ oprawy	Str.lumeny (lm)	Barwa sw. (K)	CRI	Moc (W)	A (mm)	B (mm)	C (mm)	D (mm)	D2 (mm)	E (mm)	E2 (mm)	Waga (kg)	Klasa EN
LS 00279	STT NEW-128 IP40 LED 2600 VZ	2600	3000K,4000K	>80	18W	1300	165	60	1020	100	215	35	2.5	A+
LS 00280	STT NEW-135 IP40 LED 3250 VZ	3250	3000K,4000K	>80	23W	1590	165	60	1280	100	215	35	3.5	A+
LS 00281	STT NEW-128 IP40 LED 4400 SL	4400	3000K,4000K	>80	25W	1300	165	60	1020	100	215	35	2.5	A+
LS 00282	STT NEW-135 IP40 LED 5500 SL	5500	3000K,4000K	>80	31W	1590	165	60	1280	100	215	35	3.5	A+
LS 00283	STT NEW-128 IP40 LED 2000 VI	2000	4000K	>80	20W	1300	165	60	1020	100	215	35	2.5	A
LS 00284	STT NEW-135 IP40 LED 2500 VI	2500	4000K	>80	26W	1590	165	60	1280	100	215	35	3.5	A



STT NEW-128 IP40 LED 2600 VZ



STT NEW IP40 LED



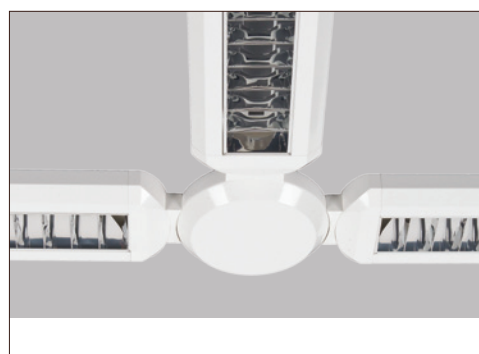
Kod ref. Typus
LS 00285 STT NEW LED



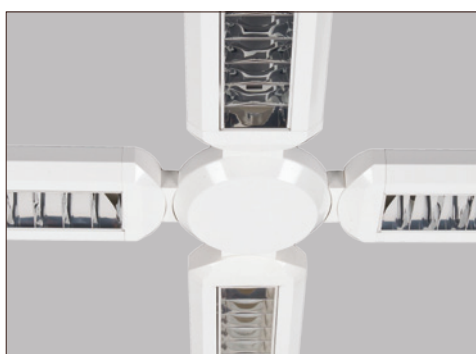
Kod ref. Typus
LS 00286 STT NEW LED



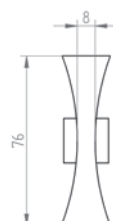
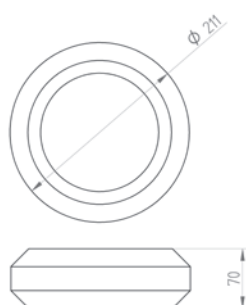
Kod ref. Typus
LS 00287 STT NEW LED L



Kod ref. Typus
LS 00288 STT NEW LED T

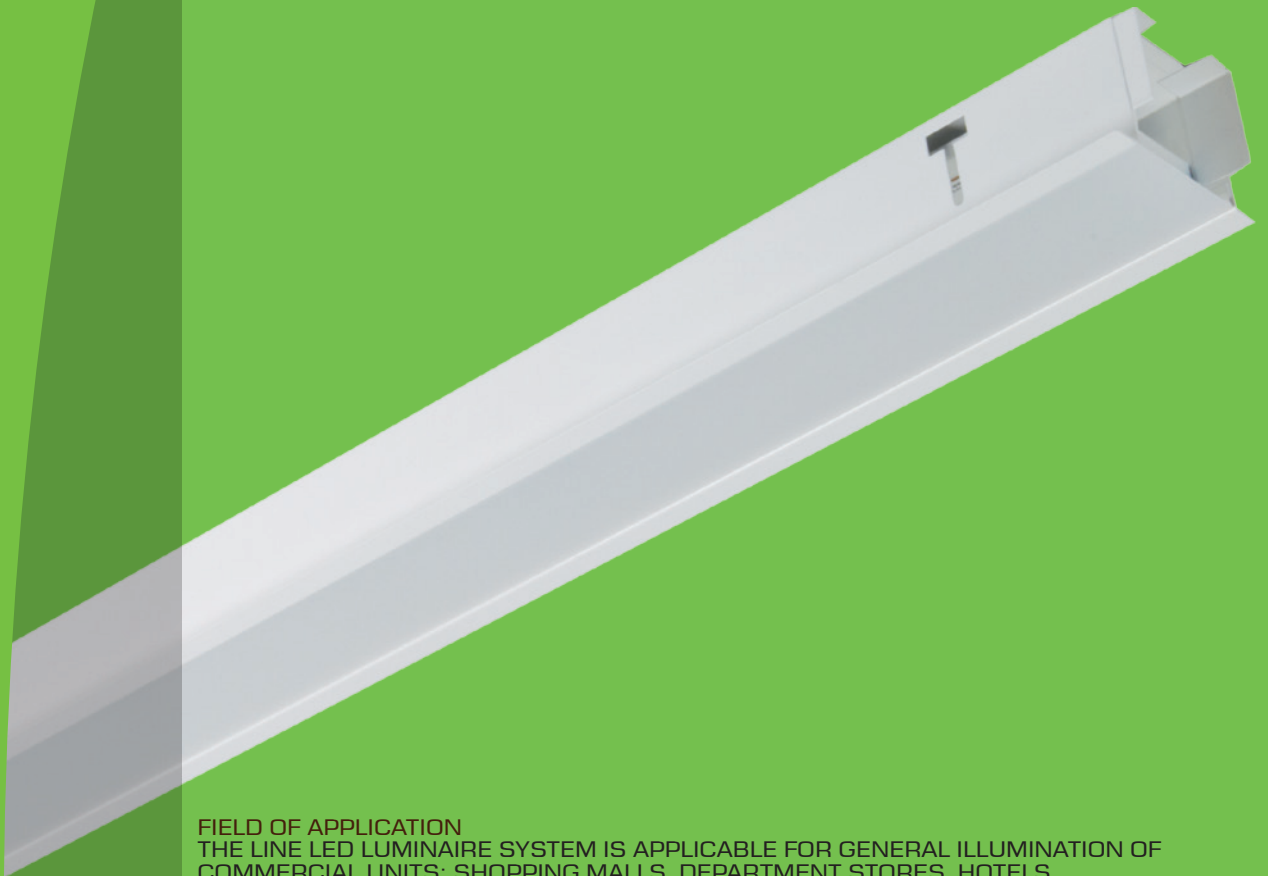


Kod ref. Typus
LS 00289 STT NEW LED X





LINE LED



FIELD OF APPLICATION

THE LINE LED LUMINAIRE SYSTEM IS APPLICABLE FOR GENERAL ILLUMINATION OF COMMERCIAL UNITS; SHOPPING MALLS, DEPARTMENT STORES, HOTELS.

THE LUMINAIRES CAN BE MOUNTED INDIVIDUALLY OR IN LIGHTING LINES

BASE MATERIAL

BODY OF LUMINAIRE: POWDER PAINTED STEEL SHEET IN WHITE RAL 9003 COLOUR

DIFFUSER: EXTRUDED OPAL POLYCARBONATE (PC)

INSTALLING

THE LUMINAIRES CAN BE MOUNTED INTO PLASTERBOARD ARTIFICIAL CEILING.





230V
50Hz



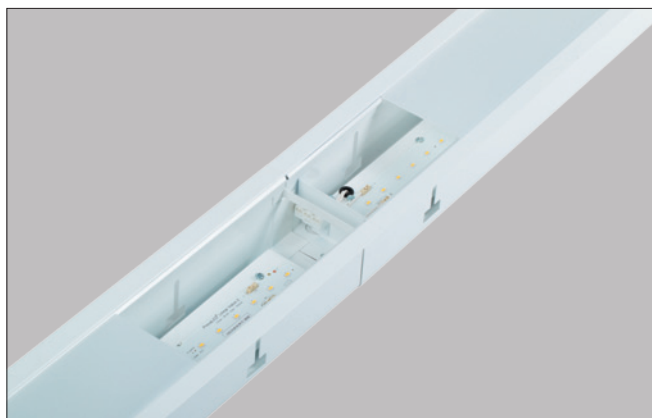
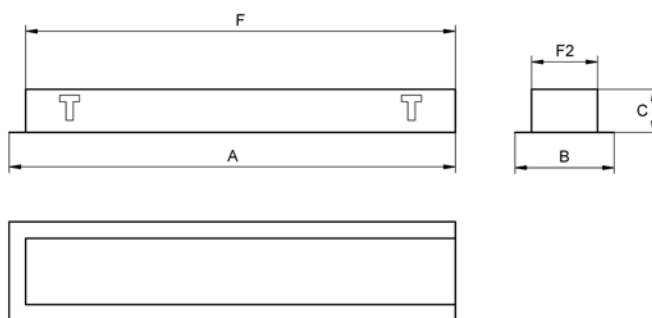
IP20



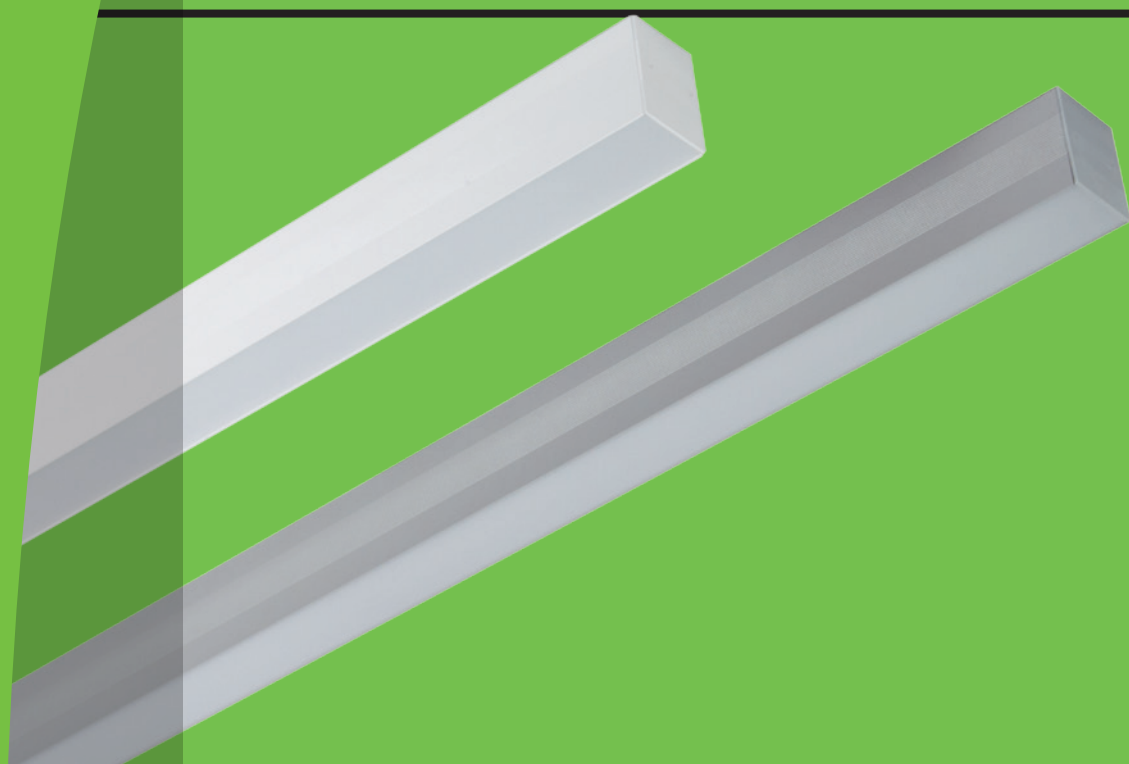
ta...25°C



Kod ref.	Typ oprawy	Str.lumeny (lm)	Barwa sw. (K)	CRI	Moc (W)	A (mm)	B (mm)	C (mm)	F (mm)	F2 (mm)	Waga (kg)	Klasa EN
LS 00290	LINE-128 LED 2600 VZ	2600	3000K, 4000K	>80	18W	1207	125	80	1187	88	3,2	A+
LS 00291	LINE-135 LED 3250 VZ	3250	3000K, 4000K	>80	23W	1497	125	80	1477	88	3,9	A+
LS 00292	LINE-114 LED 2200 SL	2200	3000K, 4000K	>80	13W	596	125	80	576	88	2,9	A+
LS 00293	LINE-128 LED 4400 SL	4400	3000K, 4000K	>80	25W	1207	125	80	1187	88	3,2	A+
LS 00294	LINE-135 LED 5500 SL	5500	3000K, 4000K	>80	31W	1497	125	80	1477	88	3,9	A+
LS 00295	LINE-114 LED 1000 VI	1000	4000K	>80	10W	596	125	80	576	88	2,9	A
LS 00296	LINE-128 LED 2000 VI	2000	4000K	>80	20W	1207	125	80	1187	88	3,2	A
LS 00297	LINE-135 LED 2500 VI	2500	4000K	>80	26W	1497	125	80	1477	88	3,9	A



VANDA LED



FIELD OF APPLICATION:

VANDA LED TYPE OF LUMINAIRES ARE SUGGESTED FOR GENERAL ILLUMINATION OF OFFICES, PUBLIC INSTITUTIONS, HOTELS, AND VARIOUS INSTITUTIONS, AS WELL AS HIGHLIGHTING AREAS SUCH AS RECEPTION DESKS. THEY ARE SUITABLE FOR WIDE VARIETY OF LIGHTING TASKS THANKS TO ITS DIRECT OR DIRECT/INDIRECT VERSION. THE LUMINAIRES ARE MADE IN INDIVIDUAL OR INTO SYSTEM MOUNTING VERSION.

BASE MATERIAL:

HOUSING OF LUMINAIRE: EXTRUDED ALUMINIUM PROFILE, POWDER PAINTED FOR THE REQUIRED COLOUR.

LAMP END:

DIFFUSER: EXTRUDED OPAL POLYMETHACRYLATE (PMMA)

INSTALLING:

LUMINAIRES CAN BE MOUNTED ONTO THE CEILING OR SUSPENDED, VERSION DIRECT/INDIRECT CAN BE SUSPENDED.

MANUFACTURING:

LUMINAIRES ARE ALSO AVAILABLE IN DIMMABLE VERSION.





230V
50Hz



IP20



ta...25°C



Kod ref.	Typ oprawy	Str.lumeny (lm)	Barwa sw. (K)	CRI	Moc (W)	A (mm)	B (mm)	C (mm)	D (mm)	E (mm)	Waga (kg)	Klasa EN
LS 00298	VANDA-128 LED 2600 D VZ	2600	3000K, 4000K	>80	20W	1160	60	77	1090	63	2.0	A+
LS 00299	VANDA-135 LED 3250 D VZ	3250	3000K, 4000K	>80	25W	1440	60	77	1370	63	2.5	A+
LS 00300	VANDA-128 LED 2600 D/I VZ	2600/1300	3000K, 4000K	>80	20W	1160	60	77	1090	63	2.2	A+
LS 00301	VANDA-135 LED 3250 D/I VZ	3250/1950	3000K, 4000K	>80	25W	1440	60	77	1370	63	2.7	A+
LS 00302	VANDA-114 LED 2200 D SL	2200	3000K, 4000K	>80	13W	600	60	77	530	63	1.6	A+
LS 00303	VANDA-128 LED 4400 D SL	4400	3000K, 4000K	>80	25W	1160	60	77	1090	63	2.0	A+
LS 00304	VANDA-135 LED 5500 D SL	5500	3000K, 4000K	>80	31W	1440	60	77	1370	63	2.5	A+
LS 00305	VANDA-128 LED 4400 D/I SL	4400/2200	3000K, 4000K	>80	25W	1160	60	77	1090	63	2.2	A+
LS 00306	VANDA-135 LED 5500 D/I SL	5500/3300	3000K, 4000K	>80	31W	1440	60	77	1370	63	2.7	A+
LS 00307	VANDA-114 LED 1000 D VI	1000	4000K	>80	10W	600	60	77	530	63	1.6	A
LS 00308	VANDA-128 LED 2000 D VI	2000	4000K	>80	20W	1160	60	77	1090	63	2.0	A
LS 00309	VANDA-135 LED 2500 D VI	2500	4000K	>80	26W	1440	60	77	1370	63	2.5	A
LS 00310	VANDA-128 LED 2000 D/I VI	2000/1000	4000K	>80	20W	1160	60	77	1090	63	2.2	A
LS 00311	VANDA-135 LED 2500 D/I VI	2500/1500	4000K	>80	26W	1440	60	77	1370	63	2.7	A





230V
50Hz

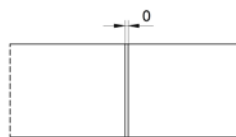


IP20

LED



ta...25°C

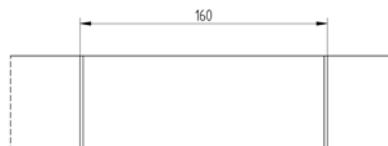
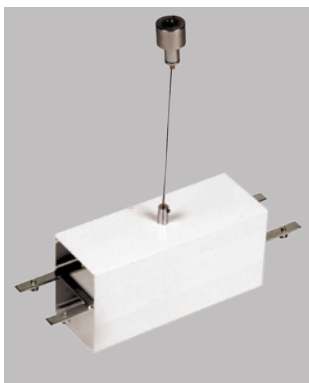


Kod ref.

TYP

LS 00312

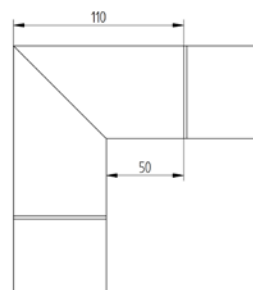
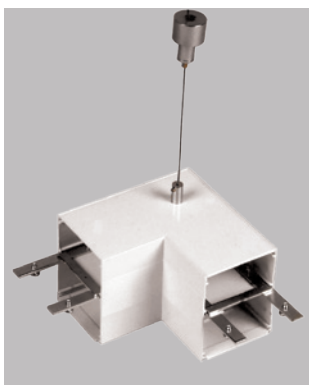
VANDA LED



Kod ref.

LS 00313

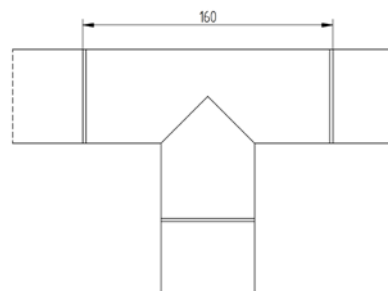
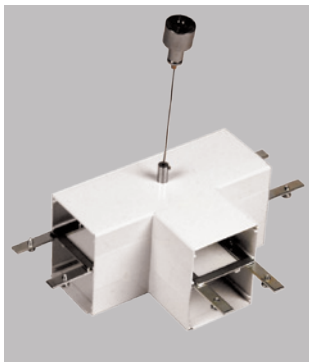
VANDA LED 160mm



Kod ref.

LS 00314

VANDA LED L



Kod ref.

LS 00315

VANDA LED T



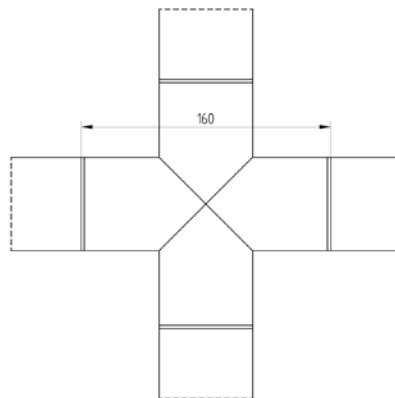
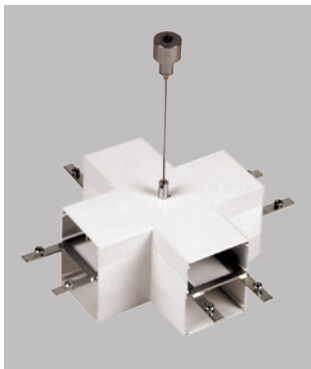
230V
50Hz



IP20



ta...25°C



Kod ref.

LS 00316

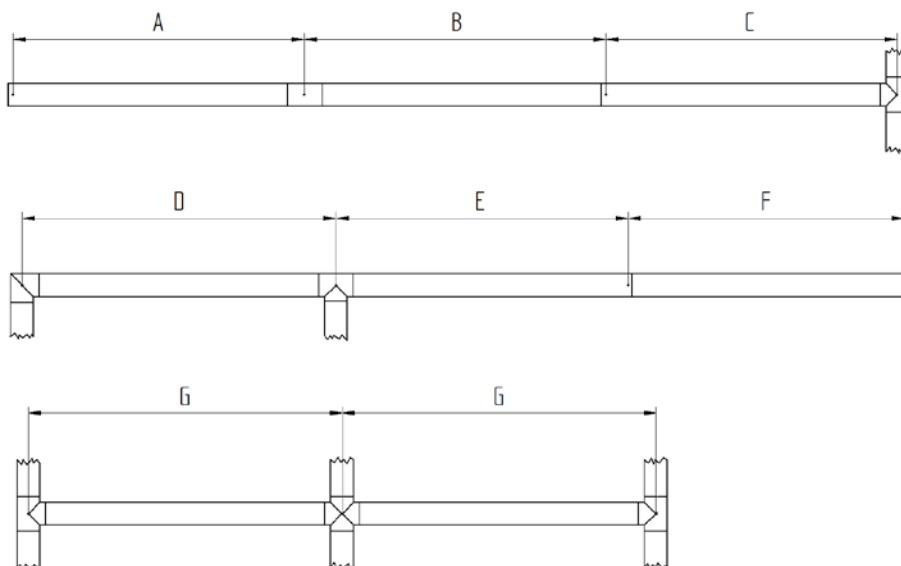
VANDA LED X



Kod ref.

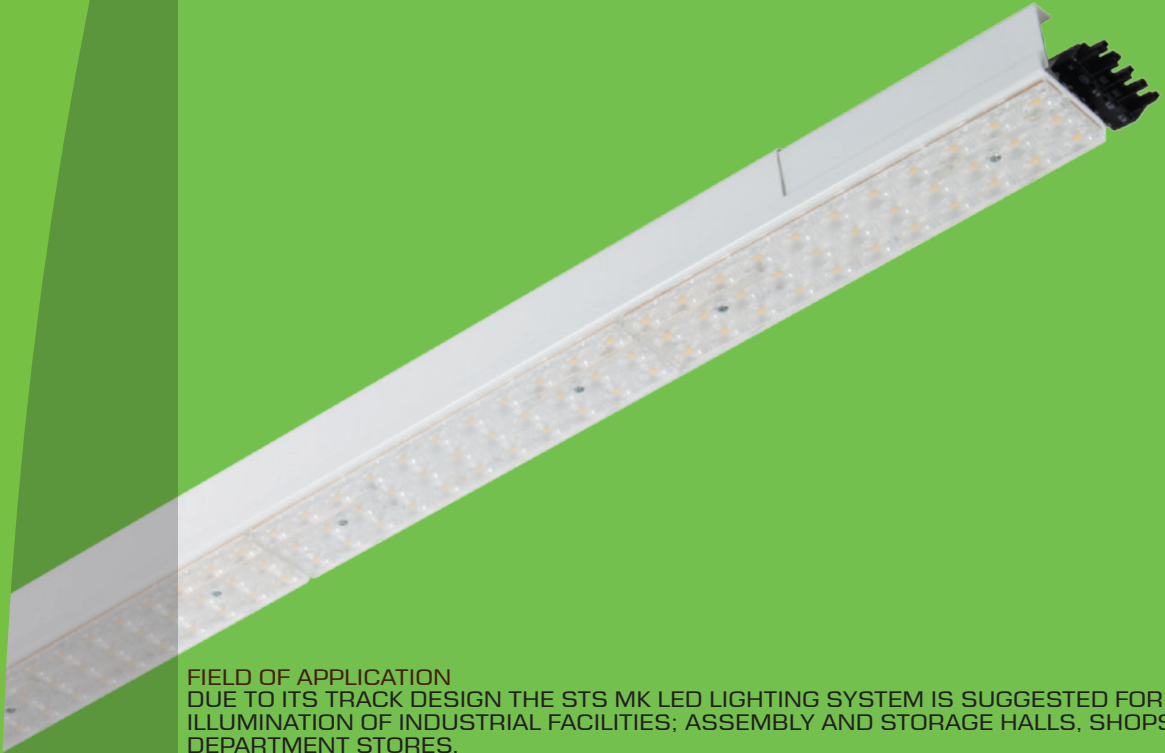
LS 00317

VANDA LED



TYP	A (mm)	B (mm)	C (mm)	D (mm)	E (mm)	F (mm)	G (mm)
VANDA-114 LED	643	709	643	756	643	596	756
VANDA-128 LED	1203	1263	1203	1316	1203	1156	1316
VANDA-135 LED	1438	1549	1438	1596	1438	1436	1596

STSMK LED



FIELD OF APPLICATION

DUE TO ITS TRACK DESIGN THE STS MK LED LIGHTING SYSTEM IS SUGGESTED FOR GENERAL ILLUMINATION OF INDUSTRIAL FACILITIES; ASSEMBLY AND STORAGE HALLS, SHOPS, DEPARTMENT STORES.

DIFFERENT LED LENS ARE AVAILABLE FOR REQUIRED LIGHTING.

THE LUMINAIRES COULD INCLUDE THE 3-PHASE, AND THE CONTROLLING CIRCUITS WIRING, THEREBY THE MOUNTING TIME CAN BE GREATLY REDUCED.

BASE MATERIAL

BODY OF THE LUMINAIRE: STEEL SHEET PAINTED WITH EPOXY POLYESTER BASED POWDER PAINT IN COLOUR RAL 9003

LED LENS HIGH LIGHT TRANSMISSION POLYMETHIL METHACRYLATE (PMMA)

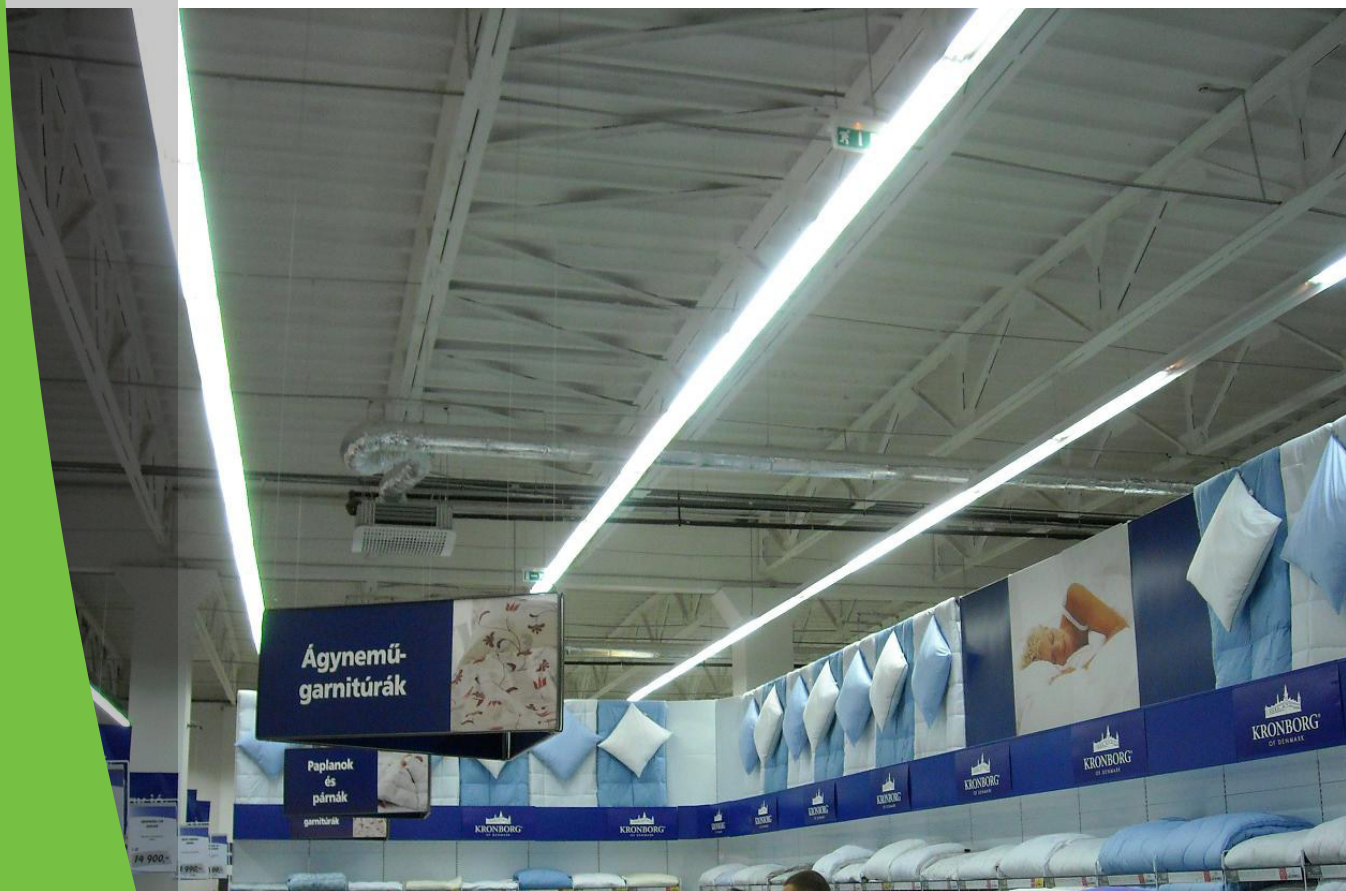
INSTALLATION

THE LUMINAIRES CAN BE MOUNTED ONTO THE CEILING OR SUSPENDED.

OPTIONS

THE LUMINAIRES ARE AVAILABLE IN DIMMABLE VERSION

WITH 3-PHASE (FIVE WIRES) WIRING OR 3-PHASE AND CONTROLLING WIRES (7 WIRES), WITH QUICK CONNECTOR SET.





230V
50Hz



IP20



ta...25°C



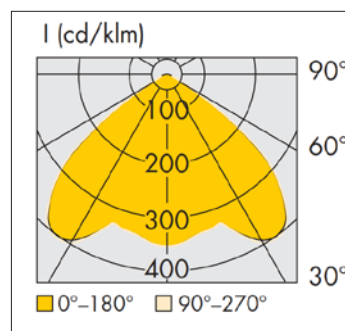
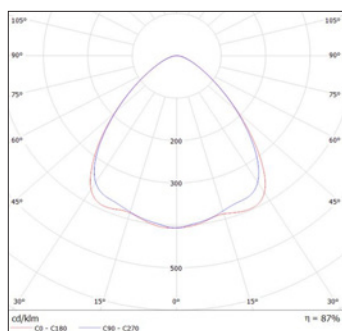
Kod ref.	Typ oprawy	Str. lumeny (lm)	Barwa sw. (K)	CRI	Moc (W)	A (mm)	B (mm)	C (mm)	Klasa EN
LS 00318	STSMK-30 LED 3900	3900	4000K	>80	31W	862	60	70	A
LS 00319	STSMK-40 LED 5200	5200	4000K	>80	41W	1148	60	70	A
LS 00320	STSMK-50 LED 6500	6500	4000K	>80	51W	1434	60	70	A
LS 00321	STSMK-60 LED 7800	7800	4000K	>80	61W	1720	60	70	A

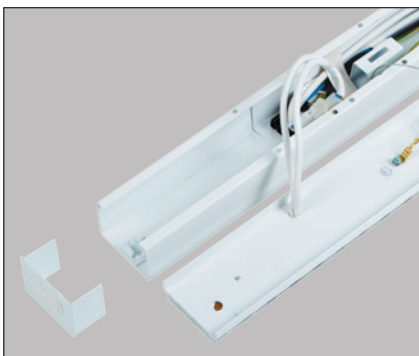


STSMK LED

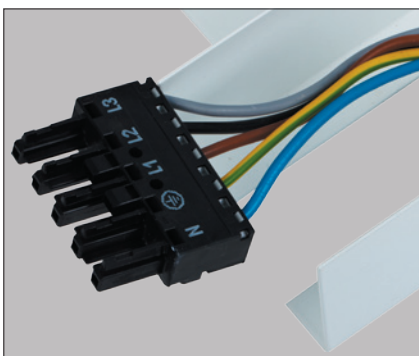


STSMK LED





STSMK LED



STSMK LED



STSMK LED



STSMK LED

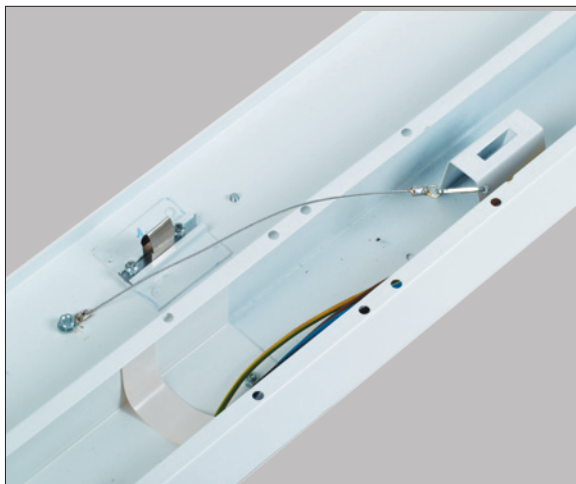
STSMK



STSMK



STSMK



STSMK



STAS TEK LED



FIELD OF APPLICATION:

THE STAS TEK LED DOWNLIGHTS ARE SUGGESTED FOR GENERAL ILLUMINATION OF SPACES OF PUBLIC INSTITUTIONS, OFFICES, BANKS, HOTELS, RESTAURANTS, HOSPITALS. THE HOUSING AND THE RING OF THE LUMINAIRE IS CONNECTED TO EACH OTHER WITH SCREW THREAD. POWER SUPPLY OF LED IS SOLVED FROM AN EXTERNAL DRIVER

BASE MATERIAL:

HOUSING OF LUMINAIRE AND RING: HIGH-PRESSURE CASTED ALUMINIUM IN WHITE COLOUR.

REFLECTOR: MIRROR POLISHED ALUMINIUM

DIFFUSER: TEMPERED WATER-CLEAR GLASS.

INSTALLING:

DOWNLIGHTS CAN BE MOUNTED INTO VISIBLE STRUCTURE AND PLASTERBOARD ARTIFICIAL CEILINGS.





230V
50Hz



IP44



ta...25°C



STAS TEK-20 LED

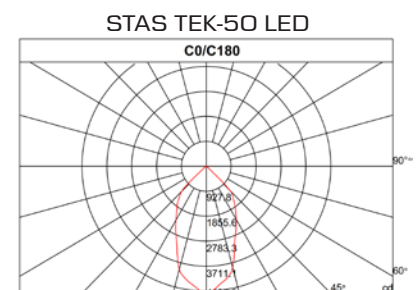
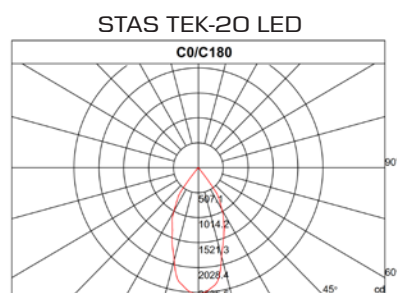
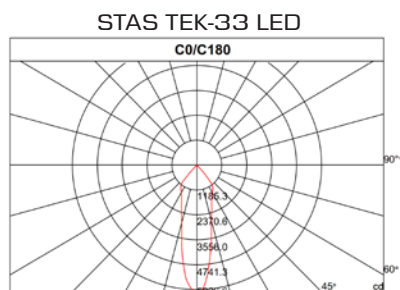
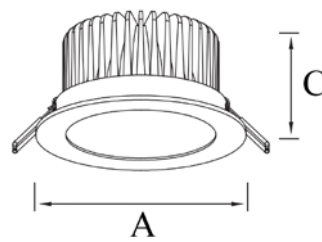


STAS TEK-33 LED



STAS TEK-50 LED

Kod ref.	Typ oprawy	Str.lumeny (lm)	Barwa sw. (K)	CRI	Moc (W)	A (mm)	C (mm)	montaz (mm)	Waga (kg)	Klasa EN
LS 00322	STAS TEK-20 LED	1627	6500K	>80	20W	140	83	125	0,6	A
LS 00323	STAS TEK-33 LED	2890	6500K	>80	33W	190	104	165	0,9	A
LS 00324	STAS TEK-50 LED	5120	6500K	>80	50W	230	110	205	1,4	A



STASK LED



FIELD OF APPLICATION

THE STASK LED RANGE OF LUMINAIRES IS SUGGESTED FOR GENERAL ILLUMINATION OF SPACES OF PUBLIC INSTITUTIONS, OFFICES, BANKS, HOTELS

BASE MATERIAL

BODY OF LUMINAIRE: HIGH-PRESSURED ALUMINIUM DIE-CASTED, PAINTED IN WHITE COLOUR

DIFFUSER: POLYMETHYL METHACRYLATE (PMMA) OPAL DIFFUSER

FIXING

THE LUMINAIRES CAN BE MOUNTED INTO EXPOSED GRID OR PLASTERBOARD ARTIFICIAL CEILINGS





230V
50Hz



IP20

LED



ta...25°C

STAS SWLA-260



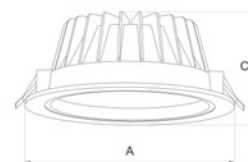
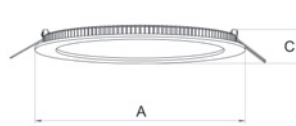
STASC SWLA-3180



STASN SWLA-22080



Kod ref.	Typ oprawy	Str.lumeny (lm)	Barwa sw. (K)	CRI	Moc (W)	A (mm)	B (mm)	C (mm)	Montaz	Waga (kg)	Klasa EN
LS 00325	STAS SWLA-260 1100	1100	4000K	>80	15W	180	-	75	160	0,6	A
LS 00326	STAS SWLA-280 1300	1300	4000K	>80	30W	230	-	83	210	1,1	A
LS 00327	STASC SWLA-3180 1100	1100	4000K	>80	18W	237	-	20	225	0,6	A
LS 00328	STASN SWLA-22080 1170	1170	4000K	>80	18W	195	195	62	175x175	0,8	A



STAS LED



FIELD OF APPLICATION

THE STAS LED RANGE OF LUMINAIRES IS SUGGESTED FOR GENERAL ILLUMINATION OF SPACES OF PUBLIC INSTITUTIONS, OFFICES, BANKS, HOTELS, RESTAURANTS, HOSPITALS. ITS IP65 PROTECTED VERSION IS APPLICABLE IN DUSTY, HUMID SPACES; SWIMMING POOLS, SPAS.

BASE MATERIAL

RING: WHITE PAINTED STEEL SHEET OR HIGH OR HIGH-PRESSURED CASTING ALUMINIUM IN WHITE COLOUR.

REFLECTOR: MIRROR POLISHED ALUMINIUM, WITH SIMPLE OR DIVIDED MIRROR.

DIFFUSER: TEMPERED WATER-CLEAR OR OPAL GLASS.

FIXING

THE LUMINAIRES CAN BE MOUNTED INTO EXPOSED GRID AND PLASTERBOARD ARTIFICIAL CEILINGS.



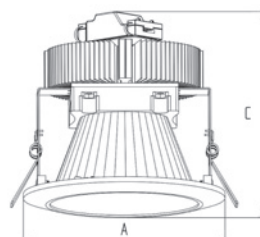
230V
50Hz

IP20

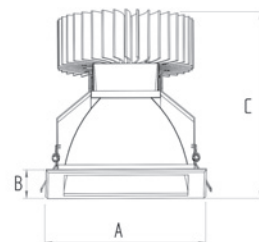
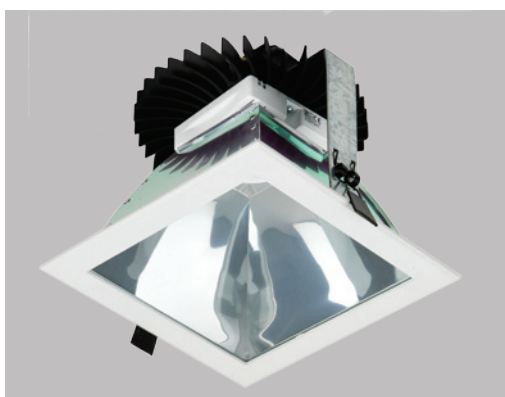
IP65



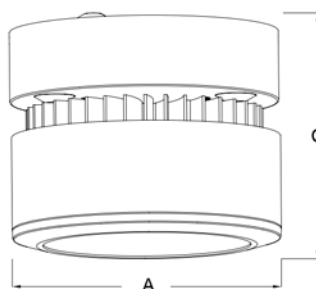
ta...25°C



Kod ref.	Typ oprawy	Str.lumeny (lm)	Barwa sw. (K)	CRI	Moc (W)	A (mm)	B (mm)	C (mm)	Montaz	Waga (kg)	Klasa EN
LS 00329	STAS-10 4019 LED 1100	1100	4000K	>80	10W	155	-	146	138	0,850	A



Kod ref.	Typ oprawy	Str.lumeny (lm)	Barwa sw. (K)	CRI	Moc (W)	A (mm)	B (mm)	C (mm)	Montaz	Waga (kg)	Klasa EN
LS 00330	STASN-10 LED 1100	1100	4000K	>80	10	200	200	175	177	1,050	A
LS 00331	STASN-19 LED 2000	2000	4000K	>80	19	200	200	175	177	1,050	A
LS 00332	STASN-29 LED 3000	3000	4000K	>80	29	200	200	175	177	1,050	A



Kod ref.	Typ oprawy	Str.lumeny (lm)	Barwa sw. (K)	CRI	Moc (W)	A (mm)	B (mm)	C (mm)	Montaz	Waga (kg)	Klasa EN
LS 00333	STAS M-13 LED 1100	1100	4000K	>80	13W	194	-	155	-	1,4	A
LS 00334	STAS M-25 LED 2000	2000	4000K	>80	25W	194	-	155	-	1,4	A



230V
50Hz

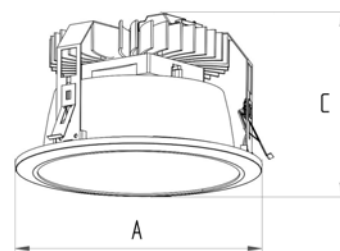


IP20

IP65



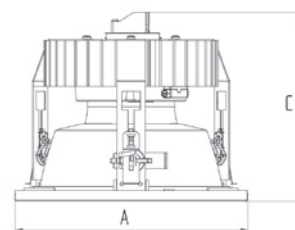
ta...25°C



Kod ref.	Typ oprawy	Str. lumeny (lm)	Barwa sw. (K)	CRI	Moc (W)	A (mm)	B (mm)	C (mm)	Montaż	Waga (kg)	Klasa EN
LS 00335	STAS-10 LED 1100	1100	4000K	>80	10W	227	-	147	210	1,150	A
LS 00336	STAS-19 LED 2000	2000	4000K	>80	19W	227	-	147	210	1,150	A
LS 00337	STAS-29 LED 3000	3000	4000K	>80	29W	227	-	147	210	1,150	A

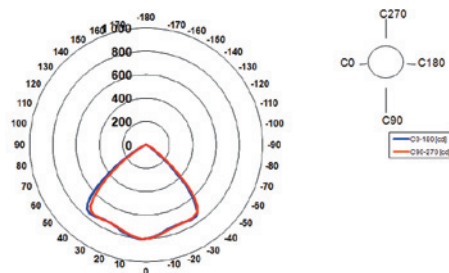


IP65



Kod ref.	Typ oprawy	Str. lumeny (lm)	Barwa sw. (K)	CRI	Moc (W)	A (mm)	B (mm)	C (mm)	Montaż	Waga (kg)	Klasa EN
LS 00338	STAS-10 LED IP65 1100	1100	4000K	>80	10W	245	-	150	210	1,540	A
LS 00339	STAS-19 LED IP65 2000	2000	4000K	>80	19W	245	-	150	210	1,540	A
LS 00340	STAS-29 LED IP65 3000	3000	4000K	>80	29W	245	-	150	210	1,540	A

STAS-19 LED IP65 2000





Please do not leave
your belongings in the
lockers.

SAUNA

STP LED



FIELD OF APPLICATION:

THE STP LED RANGE OF HIGH BAYS IS SUGGESTED FOR ENERGY EFFICIENT ILLUMINATION OF INDUSTRIAL HALLS, COMMERCIAL BUILDINGS AND WAREHOUSES, AND FOR SUCH SPACES WHERE LONG LIFETIME OF LIGHTING SOURCE IS IMPORTANT.

BASE MATERIAL:

GEAR TRAY: PAINTED, HIGH-PRESSURE CASTING RADIAL RIBBED ALUMINIUM

DIFFUSER: TEMPERED GLASS

INSTALLATION: THE LUMINAIRES CAN BE SUSPENDED THROUGH EYEBOLTS OR CAN BE FIXED WITH SURFACE BRACKET

OPTION:

THE LUMINAIRES CAN BE ORDERED WITH 1-10V DC DIMMABLE DRIVER.





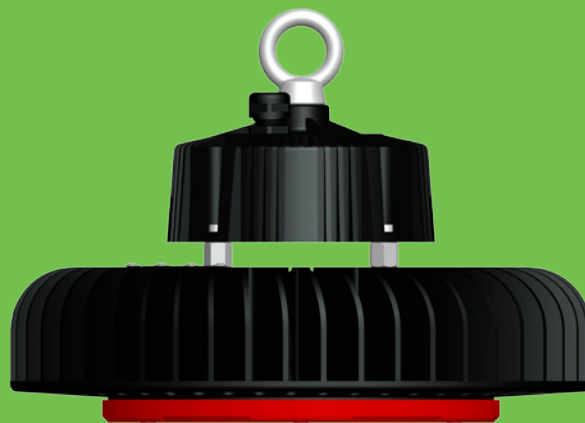
230V
50Hz



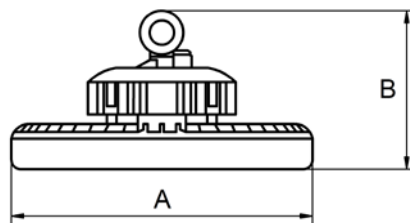
IP65



ta...25°C



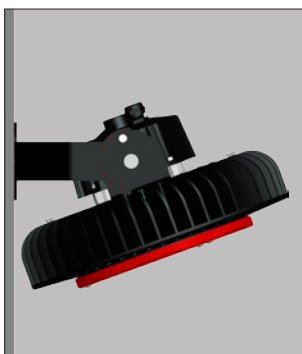
Kod ref.	Typ oprawy	Str.lumeny (lm)	Barwa sw. (K)	CRI	Moc (W)	A (mm)	B (mm)	Klasa EN
LS 00341	STP-100 LED 13000	13000	4000K	>80	100W	280	200	A
LS 00342	STP-150 LED 19500	19500	4000K	>80	150W	280	200	A
LS 00343	STP-200 LED 26000	26000	4000K	>80	200W	280	228	A
LS 00344	STP-100 LED 13000 DIM	13000	4000K	>80	100W	280	200	A
LS 00345	STP-150 LED 19500 DIM	19500	4000K	>80	150W	280	200	A
LS 00346	STP-200 LED 26000 DIM	26000	4000K	>80	200W	280	228	A



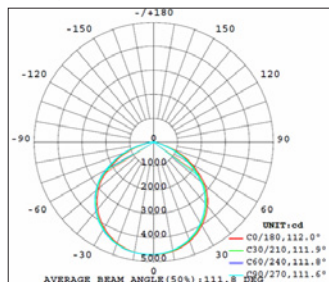
STP LED

STP LED

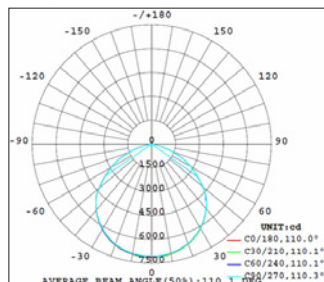
STP LED



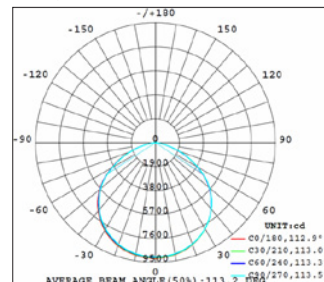
STP-100 LED 13000



STP-150 LED 19500



STP-200 LED 26000





230V
50Hz



IP65



ta...25°C

Kod ref. TYP

LS 00347 STP LED ALU 60°

LS 00348 STP LED ALU 90°



Kod ref. TYP

LS 00349 STP LED PC



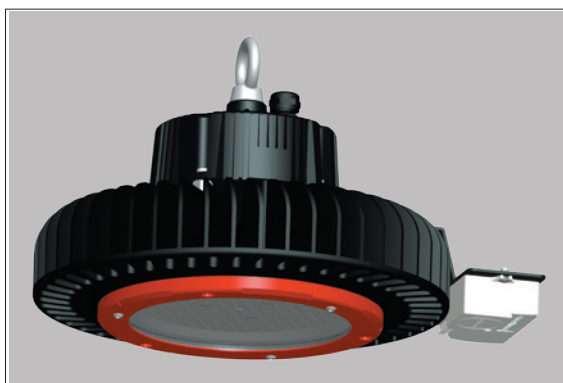
Kod ref. TYP

LS 00350 STP LED



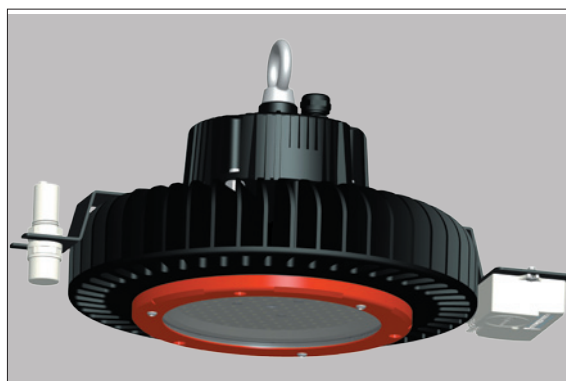
Kod ref. TYP

LS 00351 STP LED



Kod ref. TYP

LS 00352 STP LED





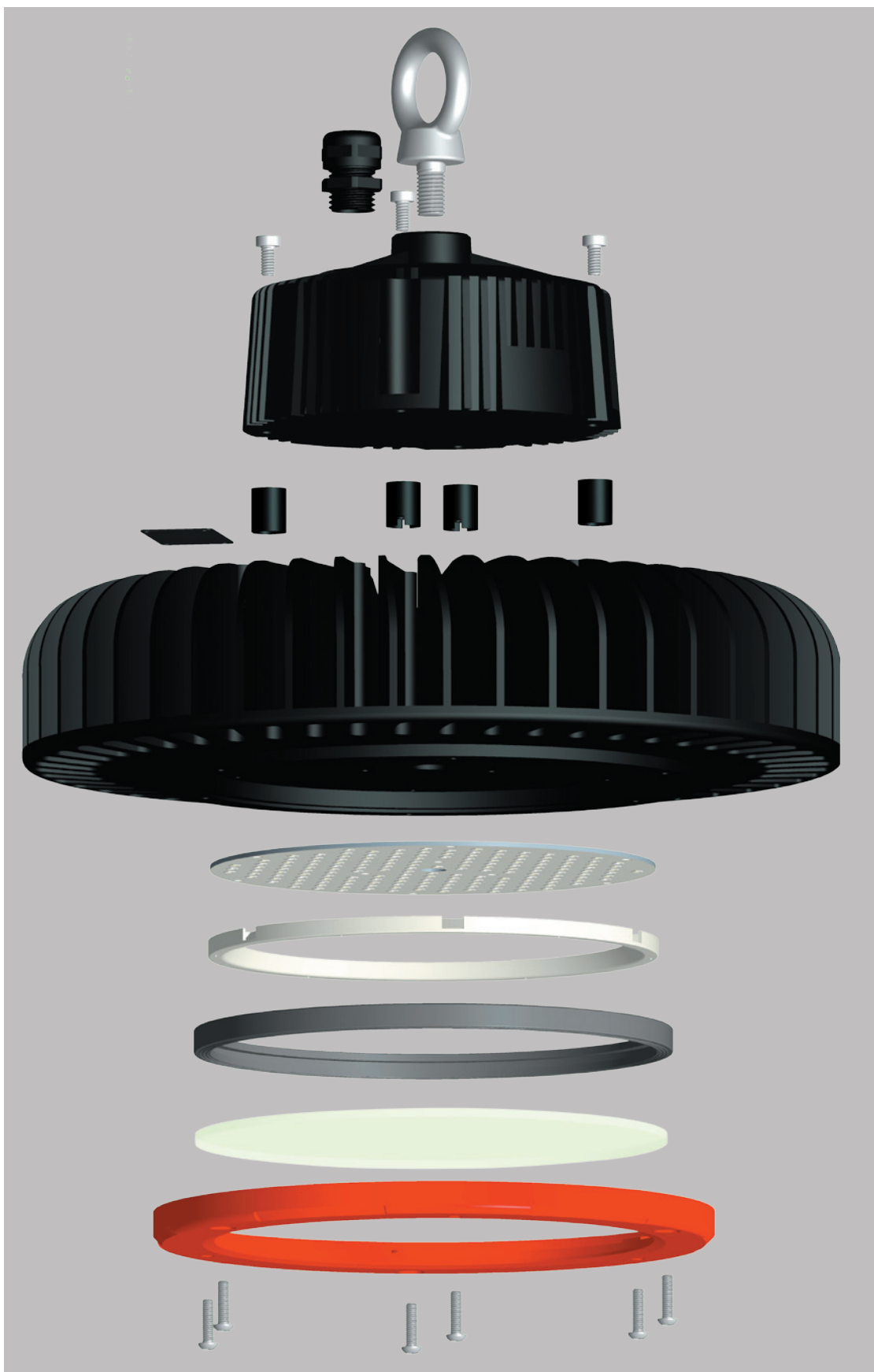
230V
50Hz



IP65



ta...25°C



TAMARA LED



FIELD OF APPLICATION

THE TAMARA LED FLOODLIGHTS ARE SUGGESTED FOR HIGHLIGHTING ILLUMINATION OF FACADES, ARTWORKS OF PUBLIC SPACES.

BASE MATERIAL

BODY OF LUMINAIRE: HIGH-PRESSURED MOLDED, BLACK PAINTED ALUMINIUM.

REFLECTOR: SYMMETRIC MIRROR POLISHED ALUMINIUM SHEET.

DIFFUSER: TEMPERED GLASS.

FIXING

THE LUMINAIRES CAN BE MOUNTED ONTO THE SIDEWALL WITH A WALL BRACKET.





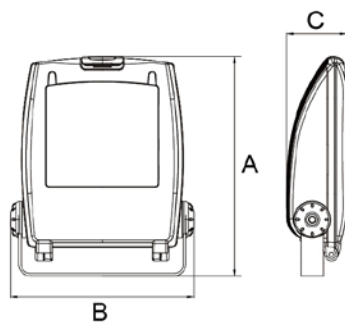
230V
50Hz



IP65



Kod ref.	Typ oprawy	Str.lumeny (lm)	Barwa sw. (K)	CRI	Moc (W)	A (mm)	B (mm)	C (mm)	Klasa EN
LS 00353	TAMARA-10 LED750	750	4000K	>80	10W	200	165	54	A
LS 00354	TAMARA-30 LED 2250	2250	4000K	>80	30W	323	241	81	A
LS 00355	TAMARA-50 LED 3750	3750	4000K	>80	50W	405	319	107	A
LS 00356	TAMARA-100 LED 7500	7500	4000K	>80	100W	475	395	128	A



STREET LED



FIELD OF APPLICATION

THE STREET LED RANGE OF LUMINAIRES IS SUGGESTED FOR ILLUMINATION OF ROADS, PUBLIC AREAS, INDUSTRIAL ZONES.

BASE MATERIAL

BODY OF LUMINAIRE: HIGH PRESSURED MOLDED ALUMINIUM

DIFFUSER: INJECTION MOLDED POLYCARBONATE (PC)

FIXING

THE LUMINAIRES CAN BE MOUNTED ONTO THE SIDEWALL WITH A WALL BRACKET AND ONTO THE TOP OF THE POLE.





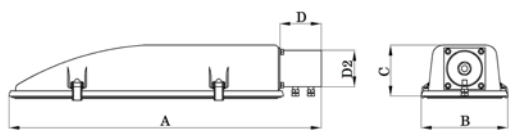
230V
50Hz



IP65



Kod ref.	Typ oprawy	Str. lumeny (lm)	Barwa sw. (K)	Moc (W)	A (mm)	B (mm)	C (mm)	D (mm)	D2 (mm)	Waga (kg)	Klasa EN
LS 00357	STREET-25 LED 3300	3300	4000K	25W	610	165	100	90	55-60	3,6	A
LS 00358	STREET-40 LED 5200	5200	4000K	40W	610	165	100	90	55-60	3,8	A



Kod ref. TYP
LS 00359 90°



Kod ref. TYP
LS 00360 80°



Kod ref. TYP
LS 00361 80°



Kod ref. TYP
LS 00362 45°



Kod ref. TYP
LS 00363 45°

STREETK LED



FIELD OF APPLICATION

THE STREETK LED RANGE OF LUMINAIRES IS SUGGESTED FOR ILLUMINATION OF ROADS, PUBLIC AREAS, INDUSTRIAL ZONES AND THEIR PARKING LOTS.

BASE MATERIAL

BODY OF LUMINAIRE: HIGH-PRESSURE CASTING ALUMINIUM, POWDER PAINTED IN GREY COLOUR.

FIXING

THE LUMINAIRES CAN BE MOUNTED ONTO THE SIDEWALL WITH A WALL BRACKET OR ON THE TOP OF THE POLE.





230V
50Hz



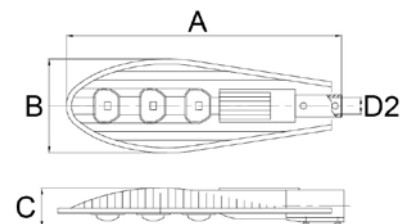
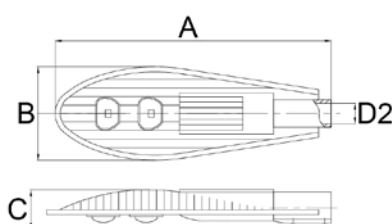
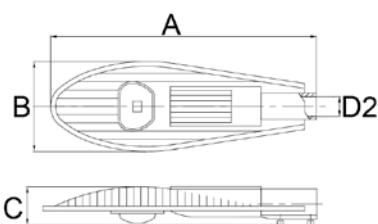
IP65



ta...25°C



Kod ref.	Typ oprawy	Str.lumeny (lm)	Barwa sw. (K)	CRI	Moc (W)	A (mm)	B (mm)	C (mm)	D2 (mm)	Klasa EN
LS 00364	STREETK-50 LED 4500	4500	4000K	>70	50W	500	215	85	50	A
LS 00365	STREETK-80 LED 7200	7200	4000K	>70	80W	620	260	90	60	A
LS 00366	STREETK-100 LED 10000	10000	4000K	>70	100W	703	280	120	60	A
LS 00367	STREETK-150 LED 13500	13500	4000K	>70	150W	880	340	120	60	A



STREET TOP LED



FIELD OF APPLICATION

THE STREET TOP LED RANGE OF LUMINAIRES IS SUGGESTED FOR ILLUMINATION OF ROADS, PUBLIC AREAS, INDUSTRIAL ZONES.

MATERIAL

BODY OF LUMINAIRE: HIGH-PRESSURE CASTING ALUMINIUM, PAINTED IN BLACK COLOUR

DIFFUSER: HIGH-POWERED TOUGHENED GLASS, POLYCARBONATE (PC) LENS SYSTEM FOR UNIFORM LIGHT DISTRIBUTION

INSTALLATION

THE LUMINAIRE CAN BE MOUNTED ONTO THE POLE





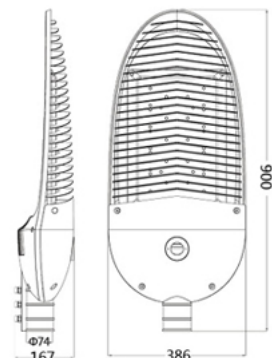
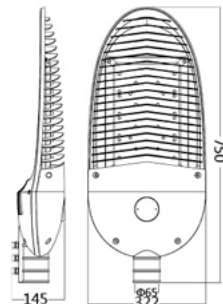
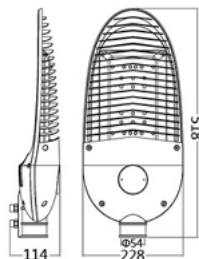
230V
50Hz



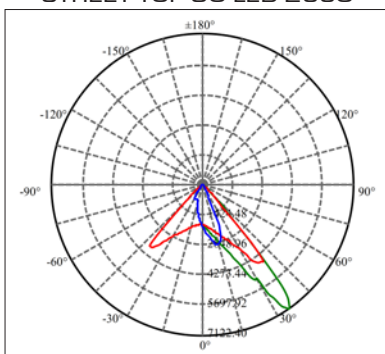
IP65



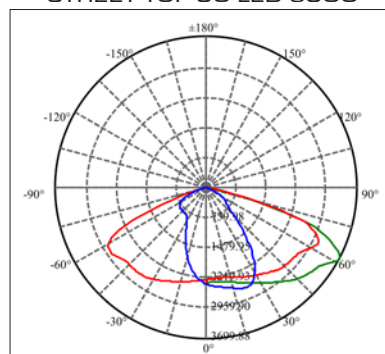
Kod ref.	Typ oprawy	Str.lumeny (lm)	Barwa sw. (K)	CRI	Moc (W)	A (mm)	B (mm)	C (mm)	D (mm)	Waga (kg)	Klasa EN
LS 00368	STREET TOP-30 LED 2550	2550	4000K	>75	30W	518	228	114	54	3,1	A
LS 00369	STREET TOP-80 LED 6800	6800	4000K	>75	80W	750	322	145	65	5,2	A
LS 00370	STREET TOP-150 LED 12750	12750	4000K	>75	150W	900	386	167	74	8,3	A



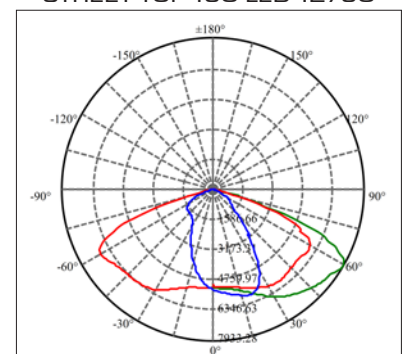
STREET TOP-30 LED 2550



STREET TOP-80 LED 6800



STREET TOP-150 LED 12750



STREET S



FIELD OF APPLICATION

THE STREET S LED RANGE OF LUMINAIRES IS SUGGESTED FOR ILLUMINATION OF ROADS, PUBLIC AREAS, INDUSTRIAL ZONES.

MATERIAL

BODY OF LUMINAIRE: HIGH-PRESSURE CASTING ALUMINIUM, PAINTED IN BLACK COLOUR

DIFFUSER: HIGH-POWERED TOUGHENED GLASS, POLYCARBONATE (PC) LENS SYSTEM FOR UNIFORM LIGHT DISTRIBUTION

INSTALLATION

THE LUMINAIRE CAN BE MOUNTED ONTO THE POLE, OR ON TOP OF THE POLE.





230V
50Hz



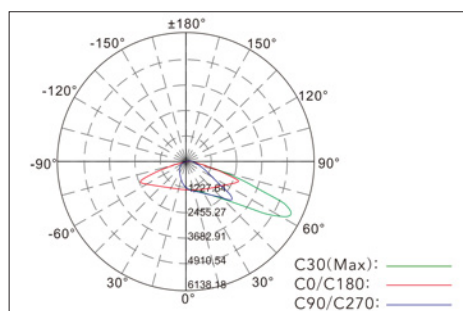
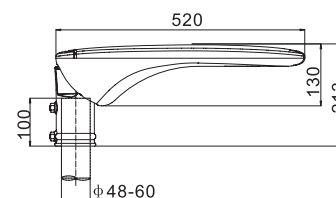
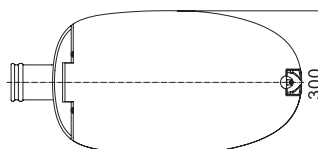
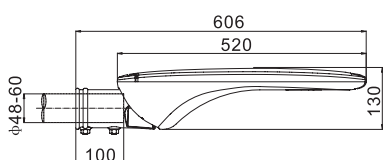
IP66



IK09



Kod ref.	Typ oprawy	Str.lumeny (lm)	Barwa sw. (K)	CRI	Moc (W)	A (mm)	B (mm)	C (mm)	D (mm)	Waga (kg)	Klasa EN
LS 00371	STREET S-38 LED 4000	4000	4000K	>70	38W	606	300	130	48-60	7,6	A
LS 00372	STREET S-55 LED 5775	5775	4000K	>70	55W	606	300	130	48-60	7,6	A
LS 00373	STREET S-73 LED 7600	7600	4000K	>70	73W	606	300	130	48-60	7,6	A
LS 00374	STREET S-90 LED 9180	9180	4000K	>70	90W	606	300	130	48-60	7,6	A



KOMBO



FIELD OF APPLICATION

THE KOMBO LED RANGE OF LUMINAIRES IS SUGGESTED FOR ILLUMINATION OF ROADS, PUBLIC AREAS, INDUSTRIAL ZONES. THE LUMINAIRE IS MANUFACTURED IN SUCH A MANNER, THAT IT CAN EASILY SATISFY DIVERSE LIGHT CHARACTERISTIC DEMANDS. LED-S ARE EQUIPPED WITH SPECIAL OPTIC LENSES, WHICH GUARANTEE HIGHLY EFFICIENT LIGHT GUIDE PANNELLING.

MATERIAL

BODY OF THE LUMINAIRE: HIGHPRESSURE DIE-CASTED ALUMINIUM

HOUSING: MOULDED POLYMER

DIFFUSER: TEMPERED GLASS SECURING IK8 PROTECTION

REGULATION

THE REGULATION OF THE LUMINAIRE HAS SEVERAL OPTIONS:

- DALI THE POPULAR, STANDARDISED VARIABLE LUMINOUS INTENSITY REGULATORY SYSTEM APPLIED IN LIGHTING TECHNOLOGY

- SMART CITY SYSTEM. MAY BE FIXED-LINE CONTROLLED AND WIRELESS CONTROL. IT FURTHER ENABLES THE INTEGRATION OF DIVERSE SENSORS, SUCH AS: PRESENCE DETECTOR, LIGHT APPEARANCE, WEATHER, CARBON MONOXIDE

INSTALLATION

THE LUMINAIRE CAN BE MOUNTED ONTO THE SIDEWALL WITH A WALL BRACKET AND ONTO THE TOP OF THE POLE.





230V
50Hz



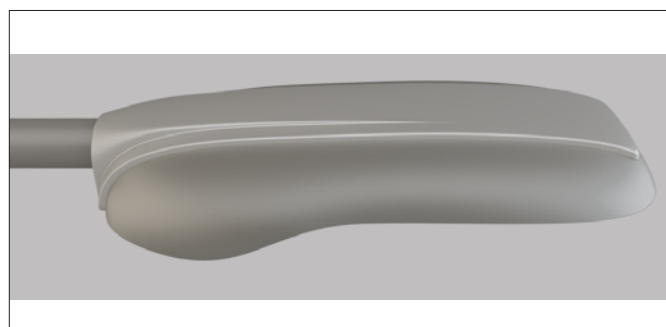
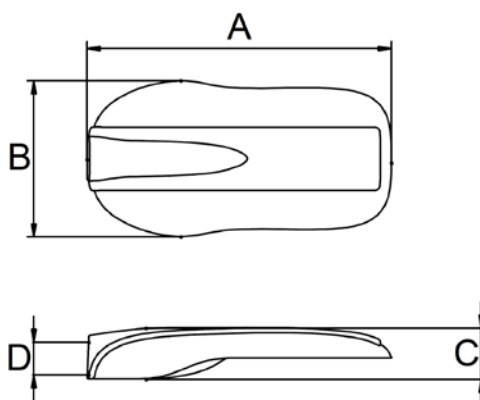
IP66



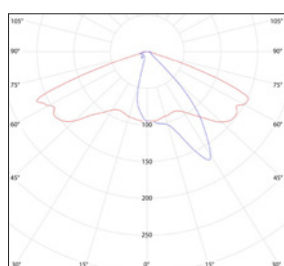
IK08



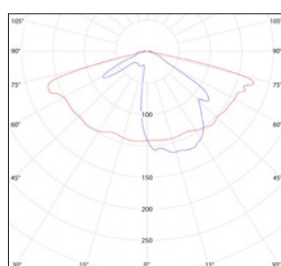
Kod ref.	Typ oprawy	Str. lumeny (lm)	Barwa sw. (K)	CRI	Moc (W)	A (mm)	B (mm)	C (mm)	D (mm)	Waga (kg)	Klasa EN
LS 00375	KOMBO I-14 LED 2100	2100	4000	>70	14,3W	578	296	97	Ø42-60	4	A
LS 00376	KOMBO II-23 LED 3400	3400	4000	>70	23,3W	578	296	97	Ø42-60	4.2	A
LS 00377	KOMBO III-36 LED 5100	5100	4000	>70	36,5W	578	296	97	Ø42-60	4.5	A
LS 00378	KOMBO IV-58 LED 7300	7300	4000	>70	58,3W	578	296	97	Ø42-60	4.7	A



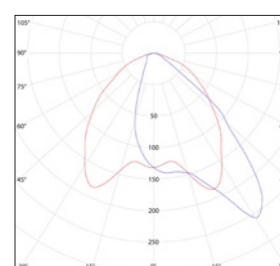
KOMBO



KOMBO



KOMBO



LUX

Oświetlenie

www.luxoswietlenie.pl

lux@luxoswietlenie.pl

Mirosław +48 660 610 728

Jacek +48 604 066 820